

E-Designs Plans Inc.

A western Canadian company from Alberta that designs and ships home plans all across Canada, the US, and Overseas.

For more information about this plan contact the designer at: info@edesignsplans.ca.

Plan #: 2020262 Front Elevation

www.edesignsplans.ca

Call Us 1-855-675-1800



Side Elevation

Corner Elevation

Rear Elevation



2-Storey with 2-Car Garage

2281 Sq. Ft. Main Floor
662 Sq. Ft. Second Floor
2943 Sq. Ft. Total Living Area

Width: 61'-4"
Depth: 70'-6"
Bedrooms: 4
Bathrooms: 3 & a Half Bath
Main Floor Laundry: Yes
Walk-in Pantry: Yes
Office/Den/Flex Room: Yes

Plan #: 2020262

Exterior Walls: 2x6 x 9 Ft. (Main Floor)
2x6 x 8 Ft. (Second Floor)
Foundation: 4' ICF (Insulated Concrete Form)
(Other Foundations Available)
Special Ceilings: Vaulted Kitchen Dining & Great Room
Fireplace: No
Deck(s): Rear (Covered)
Veranda: Front (Covered)
Attached Garage: Yes (2-Car with 10'x8' Doors)
Finished Basement Plan: No

2-Storey Plan with 2-Car Garage. This tudor style home with front covered veranda has three bedrooms on the main floor and one more upstairs. The master bedroom has a trayed ceiling, a 5-piece ensuite and large walk-in-closet. The laundry room has access directly from the walk-in-closet or the hallway. Another 2-piece bathroom is located here as well for easy access from the 2-car attached garage. The kitchen, dining and great room are open concept with vaulted ceilings. The kitchen has a corner pantry and centre island with seating. Double garden doors lead out to a rear covered deck. Upstairs is also a large bonus room and 3-piece bathroom, plus lots of attic storage.

PROTECTED BY COPYRIGHT LAWS.
PROPERTY OF **E-DESIGNS PLANS INC.**

E-Designs Plans Inc.

A western Canadian company from Alberta that designs and ships home plans all across Canada, the US, and Overseas.

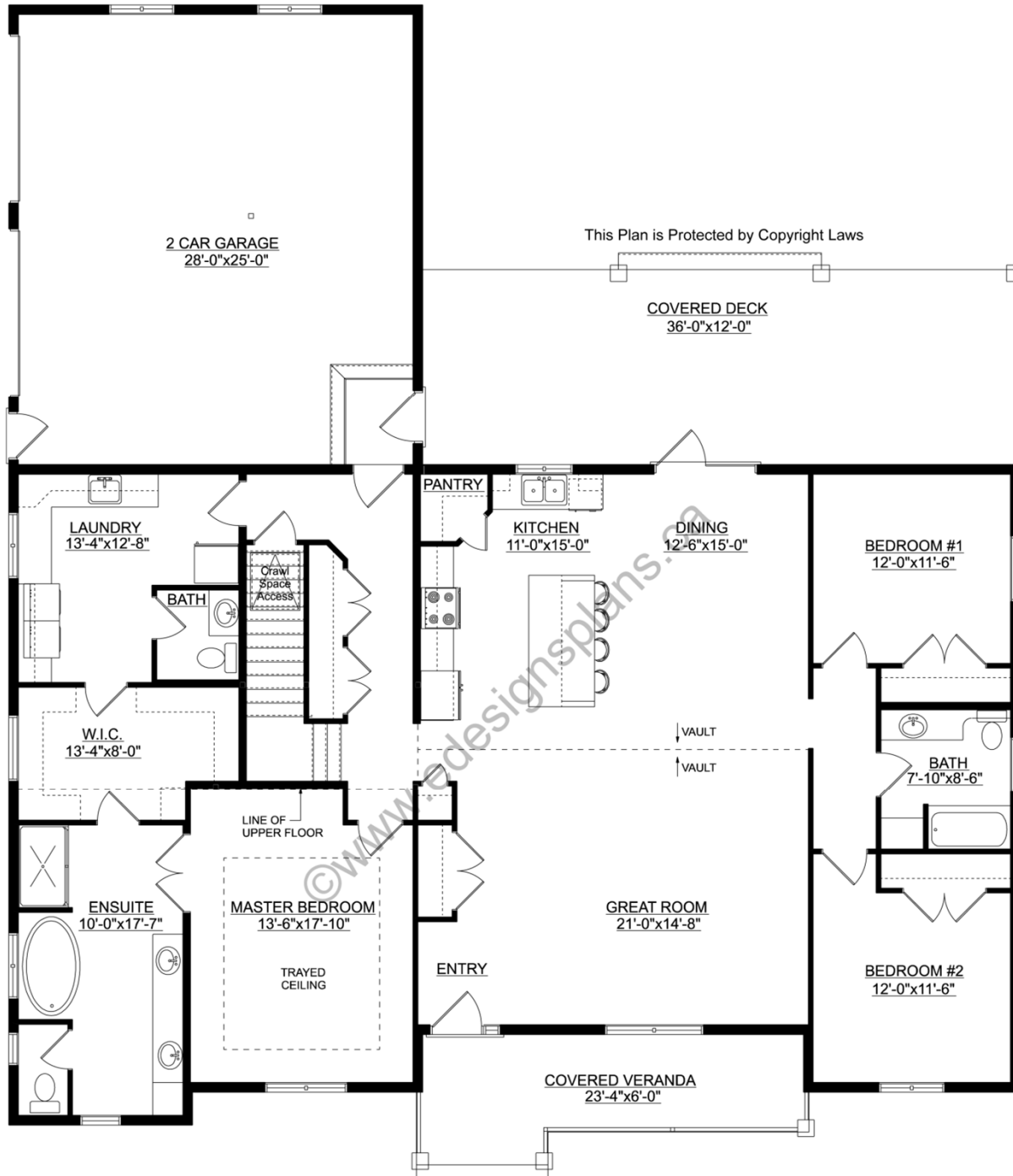
For more information about this plan contact the designer at: info@edesignsplans.ca.

Plan 2020262

www.edesignsplans.ca

[Call Us 1-855-675-1800](tel:1-855-675-1800)

Main Floor



This Plan is Protected by Copyright Laws

PROTECTED BY COPYRIGHT LAWS.
PROPERTY OF **E-DESIGNS PLANS INC.**

E-Designs Plans Inc.

A western Canadian company from Alberta that designs and ships home plans all across Canada, the US, and Overseas.

For more information about this plan contact the designer at: info@edesignsplans.ca.

Plan 2020262

www.edesignsplans.ca

[Call Us 1-855-675-1800](tel:1-855-675-1800)

Second Floor

