

# E-Designs Plans Inc.

A western Canadian company from Alberta that designs and ships home plans all across Canada, the US, and Overseas.

For more information about this plan contact the designer at: [info@edesignsplans.ca](mailto:info@edesignsplans.ca).

**Plan #: 2020245 Front Elevation**

[www.edesignsplans.ca](http://www.edesignsplans.ca)

[Call Us 1-855-675-1800](tel:1-855-675-1800)



**Left Elevation**



**Rear Elevation**

**ICF Walkout Bungalow with 2-Car Garage**  
**1539 Sq. Ft. Main Floor**

Width:	76'-0" plus Deck
Depth:	47'-0"
Bedrooms:	4
Bathrooms:	3
Main Floor Laundry:	Yes
Walk-in Pantry:	Yes
Office/Den/Flex Room:	Yes

**Plan #: 2020245**

Exterior Walls:  
Foundation:

Special Ceilings:

Fireplace:

Deck(s):

Veranda:

Attached Garage:

Finished Basement Plan:

9' ICF (Main Floor)

9' ICF (Insulated Concrete Form)  
(Other Foundations Available)

Vaulted Kitchen Dining Great Room

Yes

Side (Partially Covered)

No

Yes (2-Car with 10'x8' Doors)

Yes

**Walkout ICF Bungalow with Large 2-Car Garage.** Discover the unmatched benefits of ICF construction with this 1,539 sq. ft. home, featuring a walkout basement. The U-shaped kitchen seamlessly flows into the dining and great room, enhanced by vaulted ceilings and a patio door leading to a partially covered rear deck. The master bedroom offers a walk-in closet and a luxurious four-piece ensuite. The mudroom, with laundry facilities, connects to the spacious garage. The finished walkout basement includes a large bedroom, a flex room, an additional laundry room, cold storage, and an expansive rec room with garden door access to the rear patio, partially sheltered by the upper deck. This meticulously designed home offers superior energy efficiency, durability, and comfort, making it a wise investment in your future. Enjoy the tranquility and reliability that come with ICF construction, ensuring a home built to last.

# E-Designs Plans Inc.

A western Canadian company from Alberta that designs and ships home plans all across Canada, the US, and Overseas.

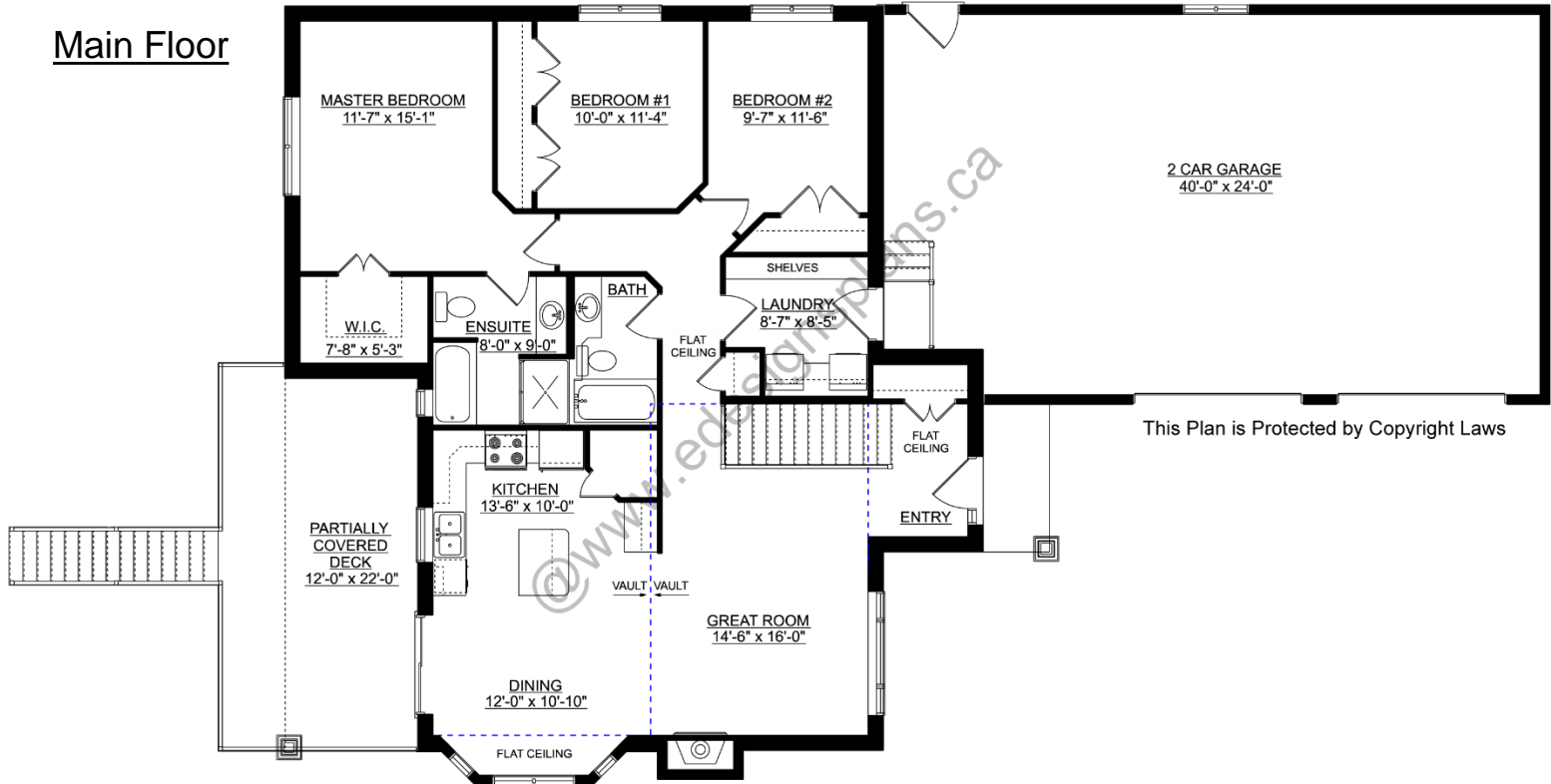
For more information about this plan contact the designer at: [info@edesignsplans.ca](mailto:info@edesignsplans.ca).

**Plan 2020245**

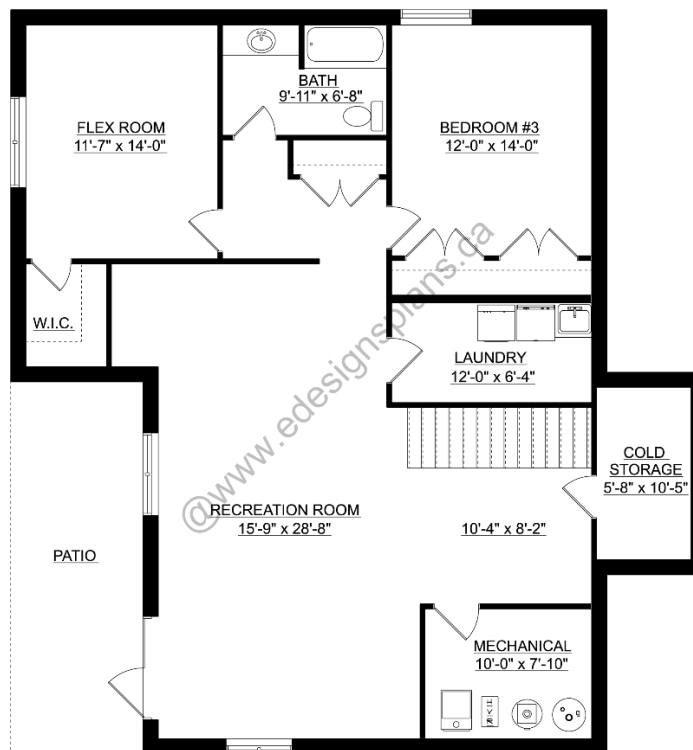
[www.edesignsplans.ca](http://www.edesignsplans.ca)

**Call Us 1-855-675-1800**

## Main Floor



## Basement



PROTECTED BY COPYRIGHT LAWS.  
PROPERTY OF **E-DESIGNS PLANS INC.**