

E-Designs Plans Inc.

A western Canadian company from Alberta that designs and ships home plans all across Canada, the US, and Overseas.

For more information about this plan contact the designer at: info@edesignsplans.ca.

Plan #: 2023438 Front Elevation

www.edesignsplans.ca

[Call Us 1-855-675-1800](tel:1-855-675-1800)



Rear Elevation



ICF Bungalow with Walkout & 4-Car Garage
2531 Sq. Ft. Main Floor

Width: 124'-0"
Depth: 77'-9" +Deck Stairs
Bedrooms: 4
Bathrooms: 3 & a Half Bath
Main Floor Laundry: Yes
Walk-in Pantry: Yes (Butler Pantry)
Office/Den: Yes

Plan #: 2023438

Exterior Walls:
Foundation:

Special Ceilings:
Fireplace:
Deck(s):
Veranda:
Attached Garage:
Finished Basement Plan:

9'-0" ICF (Main Floor)
9' -4" ICF (Insulated Concrete Form)
(Other Foundations Available)
Vaulted Living Room
Yes
Rear (Covered)
Yes (Covered)
Yes (4-Car with 18'x8' Doors)
Yes

ICF Bungalow with Walkout & 4-Car Angled Garage. With over 5,000 sq. ft. of finished space, this home, designed with Insulated Concrete Forms (ICF), exudes luxury. It features a covered entry with pillars leading to a vaulted great room with a wood-burning fireplace. The L-shaped country kitchen, complete with a butler pantry, seamlessly integrates with the dining and great rooms. A home office is located off the foyer, and a large mudroom with a 2-piece bath provides garage access. The spacious master suite offers a 5-piece ensuite and a large walk-in closet connected to the laundry room. The garage accommodates four cars, with high ceilings for car lifts, a work area, and ample storage. The finished walkout basement includes two additional bedrooms, an exercise room, and a 3-piece bath. Check out the 50-foot-long, column-free games room. Large windows and a garden door lead to the rear patio.

E-Designs Plans Inc.

A western Canadian company from Alberta that designs and ships home plans all across Canada, the US, and Overseas.

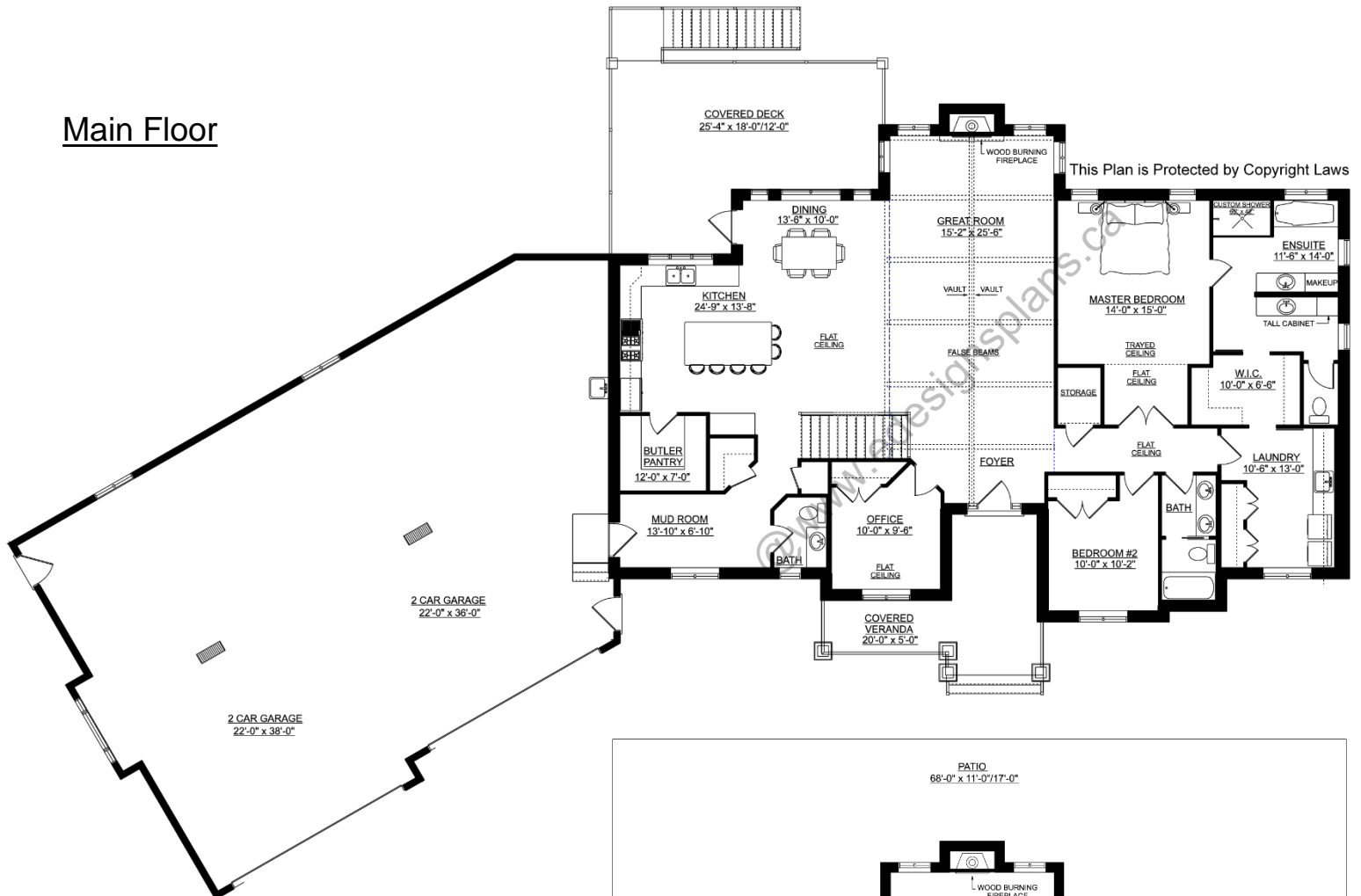
For more information about this plan contact the designer at: info@edesignsplans.ca.

Plan 2023438

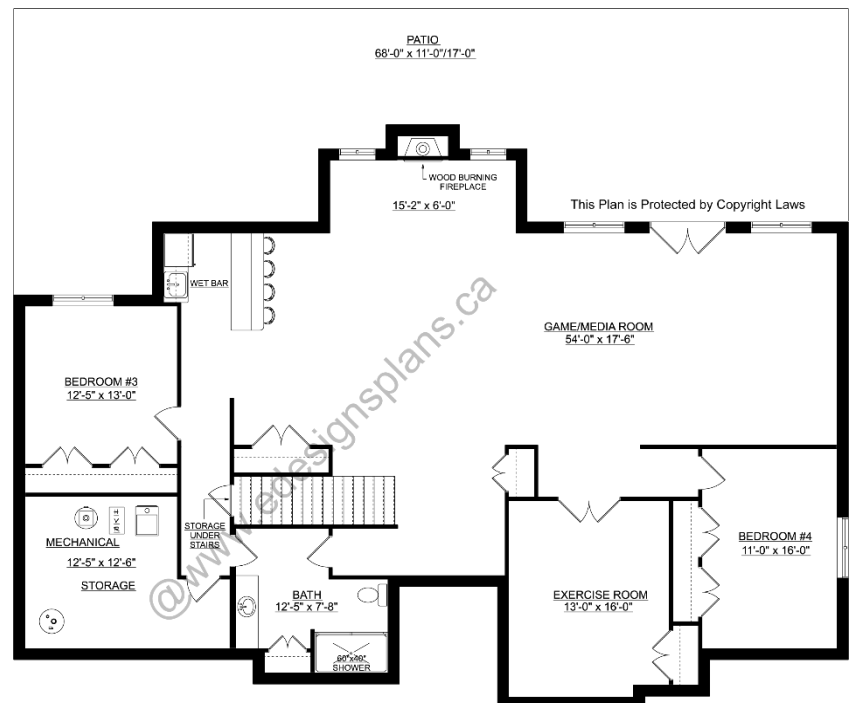
www.edesignsplans.ca

Call Us 1-855-675-1800

Main Floor



Basement



PROTECTED BY COPYRIGHT LAWS.
PROPERTY OF **E-DESIGNS PLANS INC.**