

# *E-Designs* *Plans Inc.*

A western Canadian company from Alberta that designs and ships home plans all across Canada, the US, and Overseas.

For more information about this plan contact the designer at: [info@edesignsplans.ca](mailto:info@edesignsplans.ca).

**Plan #: 2003125 Front Elevation**

[www.edesignsplans.ca](http://www.edesignsplans.ca)

**Call Us 1-855-675-1800**



**Rear Elevation**

**2-Storey Ranch Style with 2-Car Garage**

1244 Sq. Ft. Main Floor

894 Sq. Ft. Second Floor

2138 Sq. Ft. Total Living Area

Width: 74'-4" plus Cantilever

Depth: 42'-0"

Bedrooms: 3

Bathrooms: 2 and a Half Bath

Main Floor Laundry: Yes

Walk-in Pantry: No

Office/Den: Yes

**Plan #: 2003125**

Exterior Walls:

2x6 x 8 Ft. (Main Floor)

2x6 x 8 Ft. (Second Floor)

Foundation:

8' Concrete Wall

(Other Foundations Available)

Special Ceilings:

Vaulted Great Room

Fireplace:

No

Deck(s):

Rear

Veranda:

Yes (Covered)

Attached Garage:

Yes (2-Car with 18'x8' Door)

Finished Basement Plan:

No

**2-Storey Ranch Style Plan for an acreage or farmhouse.**

This ranch style design has a covered front veranda the full length of the house that wraps around to the dining room doors. The large craftsman style posts and stonework, plus the garage door being on the end add a grand look to this home from the front view. Entering from the 2-car garage, the laundry room and half bath are on the right. The hallway takes you past the stairway into the U-shaped kitchen, dining room, and great room. Pillars separate the dining room from the rest of the house. The great room is vaulted and has access to the rear deck. An office is beside the main entry. Upstairs are three bedrooms with the master having its own 3-piece ensuite. A large 4-piece bathroom with linen closet accompanies the other two bedrooms. The stairway is open to below. Mechanical is in the basement.

# E-Designs Plans Inc.

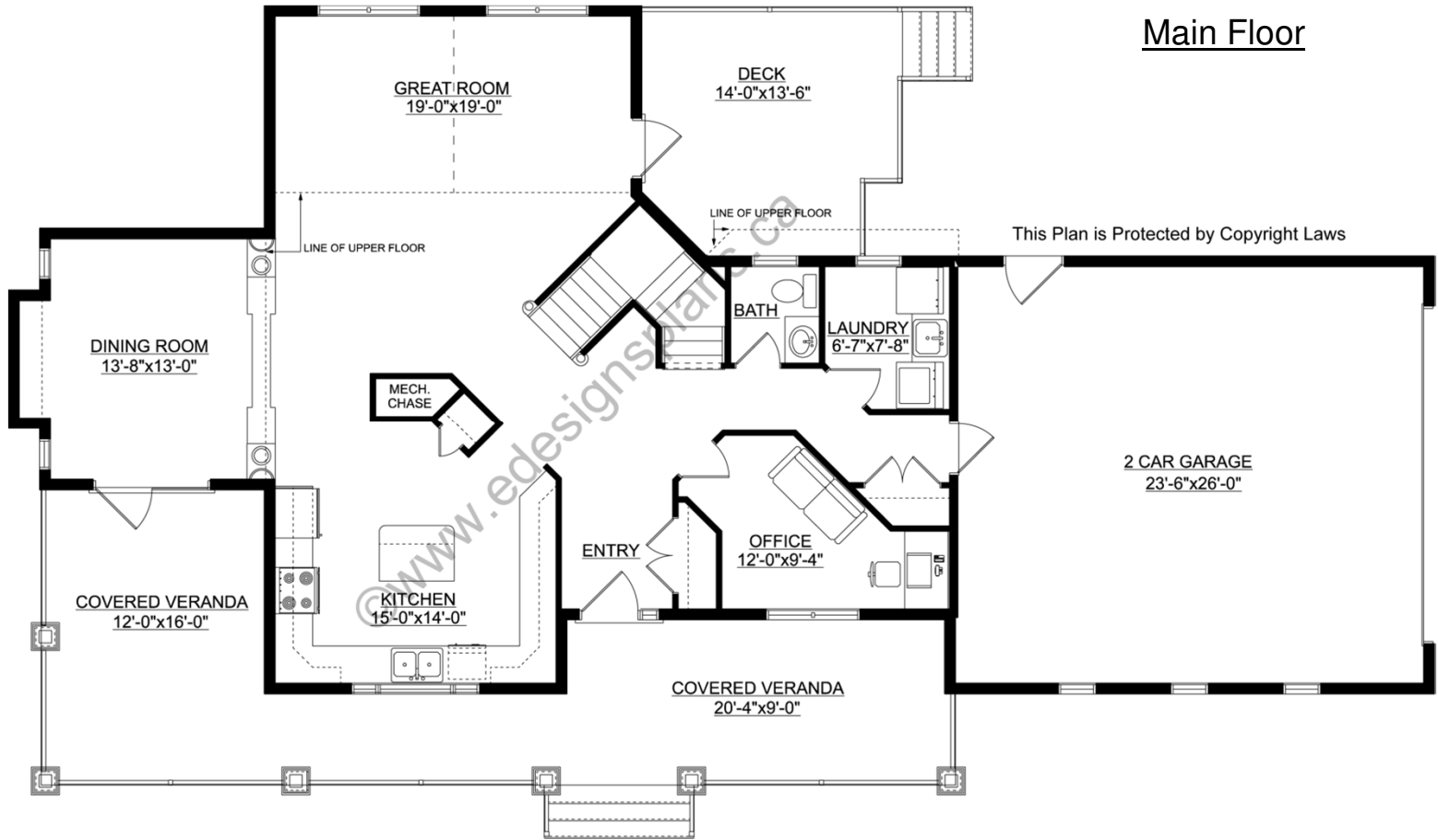
A western Canadian company from Alberta that designs and ships home plans all across Canada, the US, and Overseas.

For more information about this plan contact the designer at: [info@edesignsplans.ca](mailto:info@edesignsplans.ca).

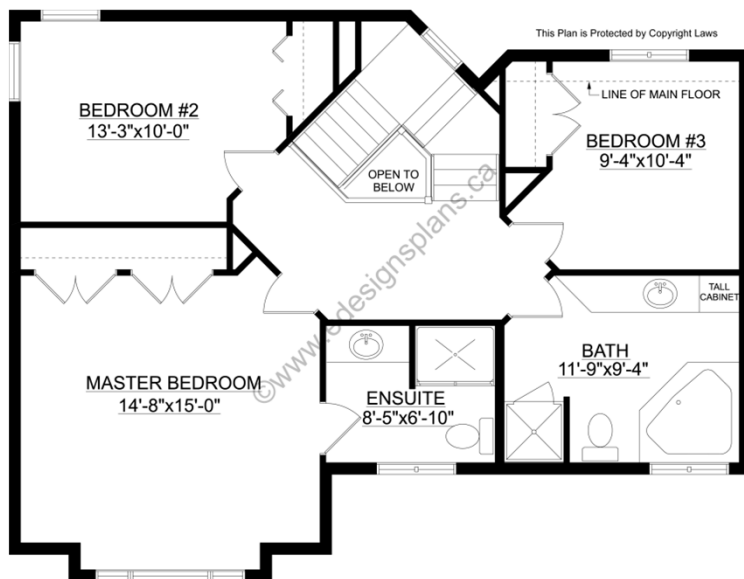
Plan 2003125

[www.edesignsplans.ca](http://www.edesignsplans.ca)

Call Us 1-855-675-1800



Main Floor



Second Floor

PROTECTED BY COPYRIGHT LAWS.  
PROPERTY OF **E-DESIGNS PLANS INC.**