

E-Designs Plans Inc.

A western Canadian company from Alberta that designs and ships home plans all across Canada, the US, and Overseas.

For more information about this plan contact the designer at: info@edesignsplans.ca.

Plan #: 2006307 Front Elevation

www.edesignsplans.ca

Call Us 1-855-675-1800



Rear Elevation

2-Storey with 2-Car Garage

1321 Sq. Ft. Main Floor

741 Sq. Ft. Second Floor

2062 Sq. Ft. Total Living Area

Width: 44'-9"
 Depth: 60'-6" (plus deck)
 Bedrooms: 4
 Bathrooms: 2 & a Half Bath
 Main Floor Laundry: Yes
 Walk-in Pantry: No
 Office/Den: No

Plan #: 2006307

Exterior Walls: 2x6 x 9 Ft. (Main Floor)
 2x6 x 8 Ft. (Second Floor)
 Foundation: 8' ICF (Insulated Concrete Form)
 (Other Foundations Available)
 Special Ceilings: Vaulted Kitchen/Dining/Great Rm
 Fireplace: Yes
 Deck(s): Rear
 Veranda: No
 Attached Garage: Yes (2-Car with 10'x8' Doors)
 Finished Basement Plan: No

2-Storey with 2-Car Garage: This 2-Storey Plan has great curb appeal with its large front entrance, stucco finish, brick trim, and multi-roof lines. The front foyer has plenty of space and is open to the great room, which is vaulted, together with the dining room and kitchen, to the second floor. The kitchen and dining room are raised a couple of steps for added design. The U-shaped kitchen has plenty of counter space and a large upright pantry beside the fridge. Double garden doors lead out to the rear deck. A large sunken family room with a corner fireplace is situated off the kitchen. Main floor laundry and a half bath are located around the corner from the kitchen. The bedroom on this floor could also be switched out for an office, den, exercise, craft or storage room. Upstairs are three bedrooms and a 3-piece bathroom. The master bedroom extends over a portion of the garage and has a small sitting area, along with its own walk-in closet and 3-piece bathroom. The garage has plenty of room, two 10'x8' doors, and a man-door from the rear. You can also access the house from the garage through the laundry room. The basement is undeveloped and can be completed with any additional rooms you may need.

PROTECTED BY COPYRIGHT LAWS.
 PROPERTY OF **E-DESIGNS PLANS INC.**

E-Designs Plans Inc.

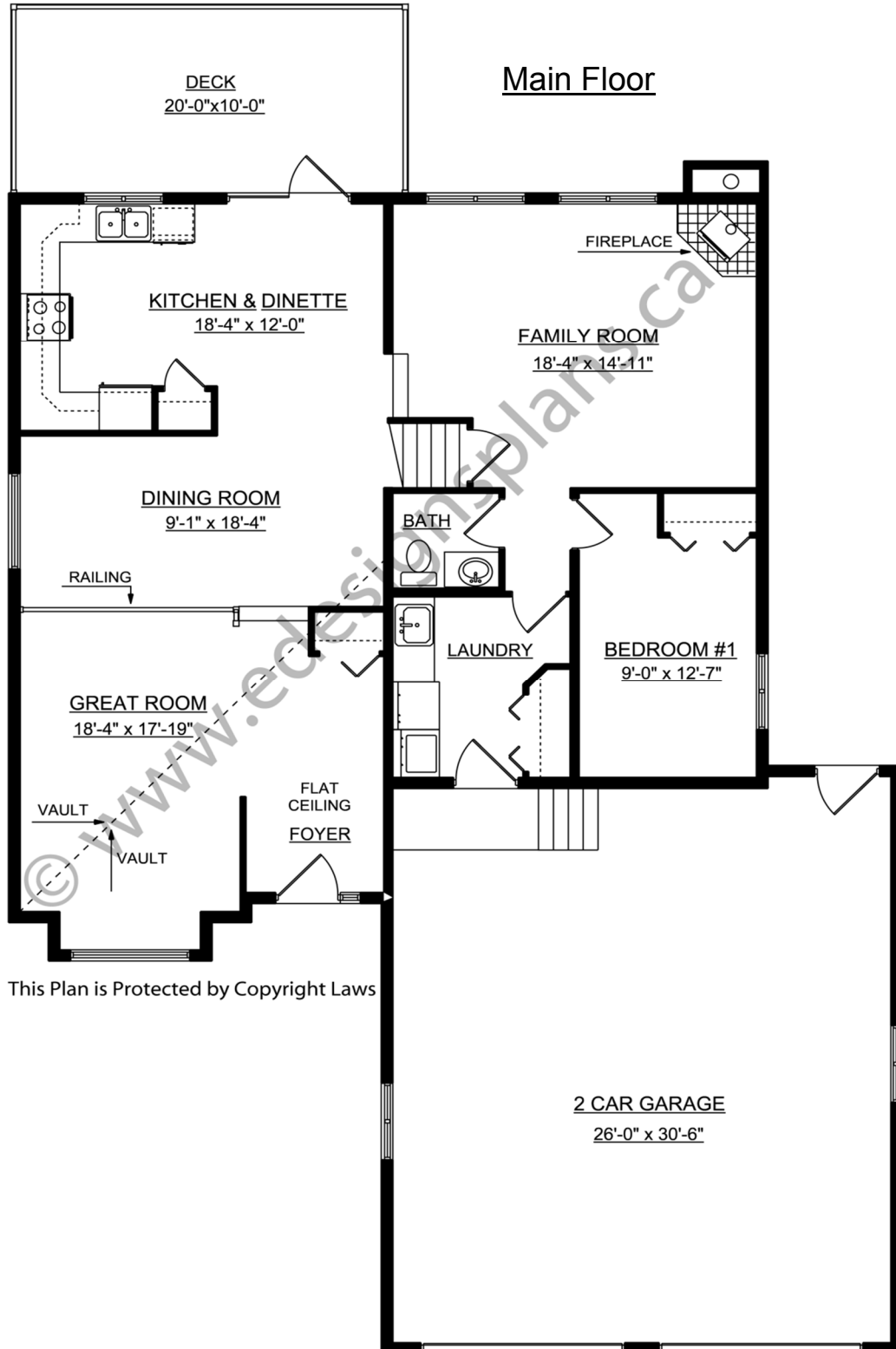
A western Canadian company from Alberta that designs and ships home plans all across Canada, the US, and Overseas.

For more information about this plan contact the designer at: info@edesignsplans.ca.

Plan 2006307

www.edesignsplans.ca

Call Us 1-855-675-1800



This Plan is Protected by Copyright Laws

PROTECTED BY COPYRIGHT LAWS.
PROPERTY OF **E-DESIGNS PLANS INC.**

E-Designs Plans Inc.

A western Canadian company from Alberta that designs and ships home plans all across Canada, the US, and Overseas.

For more information about this plan contact the designer at: info@edesignsplans.ca.

Plan 2006307

www.edesignsplans.ca

[Call Us 1-855-675-1800](tel:1-855-675-1800)

Second Floor

