

# E-Designs Plans Inc.

A western Canadian company from Alberta that designs and ships home plans all across Canada, the US, and Overseas.

For more information about this plan contact the designer at: [info@edesignsplans.ca](mailto:info@edesignsplans.ca).

**Plan #: 2006309 Front Elevation**

[www.edesignsplans.ca](http://www.edesignsplans.ca)

**Call Us 1-855-675-1800**



**Rear Elevation**



## **2-Storey Plan**

700 Sq. Ft. Main Floor

700 Sq. Ft. Second Floor

1400 Sq. Ft. Total Living Area

Width: 26'-0"

Depth: 46'-0" (Plus Rear Deck)

Bedrooms: 3

Bathrooms: 2 & a Half Bath

Main Floor Laundry: Yes

Walk-in Pantry: Yes

Office/Den: No

## **Plan #: 2006309**

Exterior Walls:

Foundation:

Special Ceilings:

Fireplace:

Deck(s):

Veranda:

Attached Garage:

Finished Basement Plan:

2x6 x 8 Ft. (Main Floor)

2x6 x 8 Ft. (Second Floor)

8' Concrete Wall  
(Other Foundations Available)

No

No

Rear (Optional)

Front & Side (Covered)

No

No

**2-Storey Plan:** A great starter home that fits a narrow lot. Main floor living room with bay window. An L-shaped kitchen with dinette and walk-in pantry. A garden door leads to the rear deck. The front has a covered veranda that wraps around the side. Main floor laundry. The second floor has three bedrooms. The large master bedroom also has a bay window, walk-in closet, and 3-piece ensuite. Full undeveloped basement.

PROTECTED BY COPYRIGHT LAWS.  
PROPERTY OF **E-DESIGNS PLANS INC.**

# E-Designs Plans Inc.

A western Canadian company from Alberta that designs and ships home plans all across Canada, the US, and Overseas.

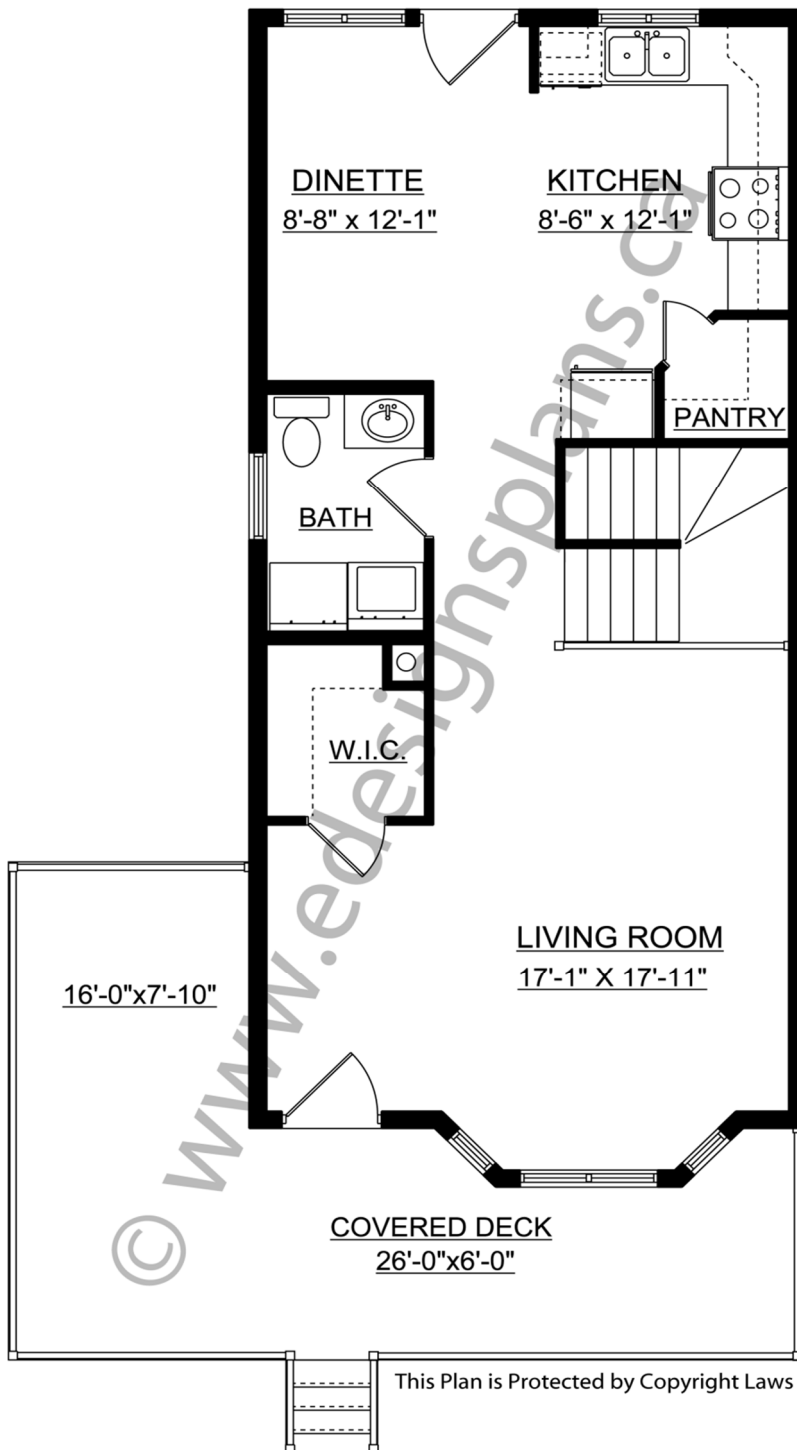
For more information about this plan contact the designer at: [info@edesignsplans.ca](mailto:info@edesignsplans.ca).

Plan 2006309

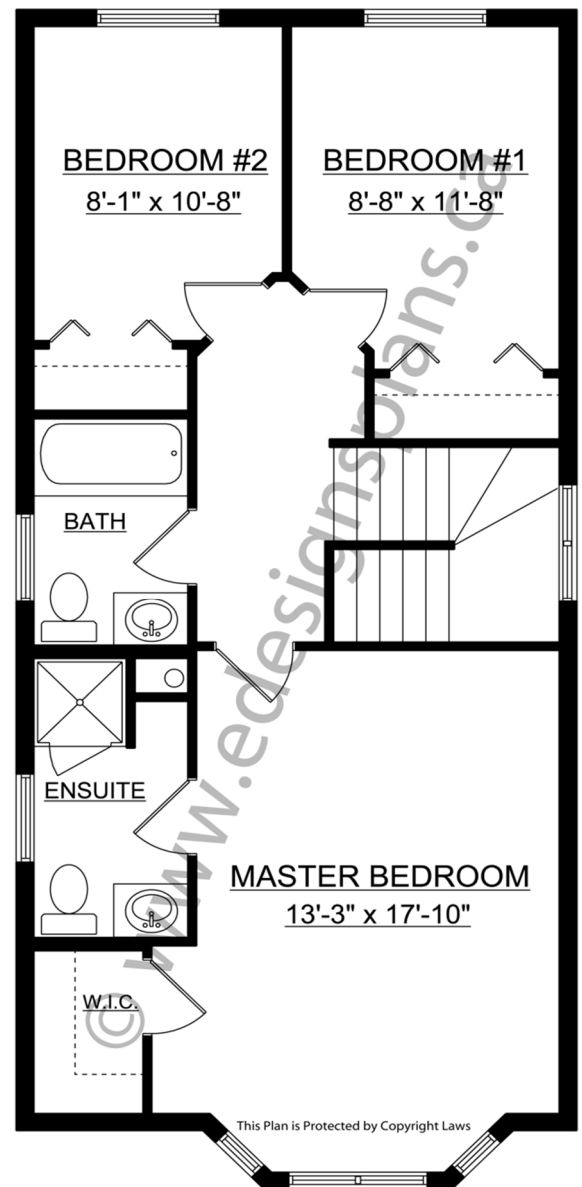
[www.edesignsplans.ca](http://www.edesignsplans.ca)

[Call Us 1-855-675-1800](tel:1-855-675-1800)

Main Floor



Second Floor



PROTECTED BY COPYRIGHT LAWS.  
PROPERTY OF **E-DESIGNS PLANS INC.**