

# E-Designs Plans Inc.

A western Canadian company from Alberta that designs and ships home plans all across Canada, the US, and Overseas.

For more information about this plan contact the designer at: [info@edesignsplans.ca](mailto:info@edesignsplans.ca).

**Plan #: 2009440 Front Elevation**

[www.edesignsplans.ca](http://www.edesignsplans.ca)

**Call Us 1-855-675-1800**



## **Cottage Plan with 2-Car Garage**

**1056 Sq. Ft. Total Living Area**

## **Plan #: 2009440**

Width: 24'-0"  
Depth: 44'-0" (plus deck)  
Bedrooms: 2  
Bathrooms: 2  
Main Floor Laundry: Yes  
Walk-in Pantry: No  
Flex Room/Office: No  
Finished Basement Plan: No

Exterior Walls:

Foundation:

Special Ceilings:

Fireplace:

Deck(s):

Veranda:

Attached Garage:

2x6 x 8 Ft. (Upper Floor)

2x6 x 9 Ft. (Lower Floor)

4' Concrete Wall

(Other Foundations Available)

Vaulted Dining/Living Room & Deck

No

Front (Covered)

No

Yes (2-Car with 10'x8' Doors)

**The Perfect Cottage Retreat.** 1056 Sq. Ft. of living space on the second floor. The plan has been designed to use all the available space effectively. The large master bedroom has a walk-in closet and a 3-piece bath. The laundry room is also located on this level. There is a 3-piece bath off the second bedroom. The galley kitchen has room for all the appliances and a 24" wide full height pantry cabinet. The dining area and family room have a great view with the large windows that go up to the vaulted ceiling. Walk out onto the covered deck through the double garden doors. The lower level has a 2-car garage and large workshop with it's own 9'x7' overhead door. There is also a 2-piece bath conveniently located so no need to run upstairs. This plan would be great for any retreat.

PROTECTED BY COPYRIGHT LAWS.  
PROPERTY OF **E-DESIGNS PLANS INC.**

# ***E-Designs Plans Inc.***

A western Canadian company from Alberta that designs and ships home plans all across Canada, the US, and Overseas.

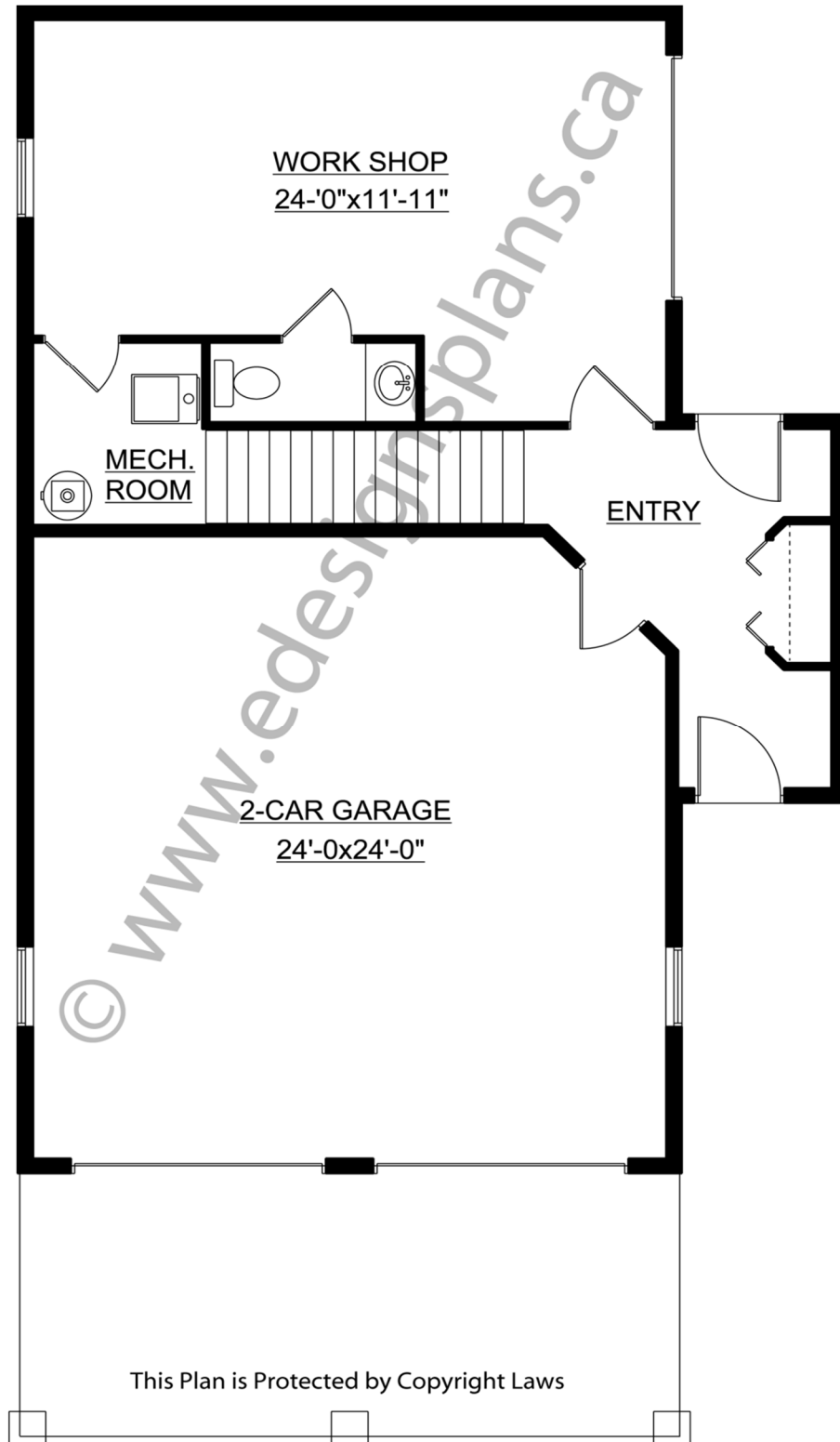
For more information about this plan contact the designer at: [info@edesignsplans.ca](mailto:info@edesignsplans.ca).

Plan 2009440

[www.edesignsplans.ca](http://www.edesignsplans.ca)

[Call Us 1-855-675-1800](tel:1-855-675-1800)

Lower Floor



This Plan is Protected by Copyright Laws

PROTECTED BY COPYRIGHT LAWS.  
PROPERTY OF **E-DESIGNS PLANS INC.**

# E-Designs Plans Inc.

A western Canadian company from Alberta that designs and ships home plans all across Canada, the US, and Overseas.

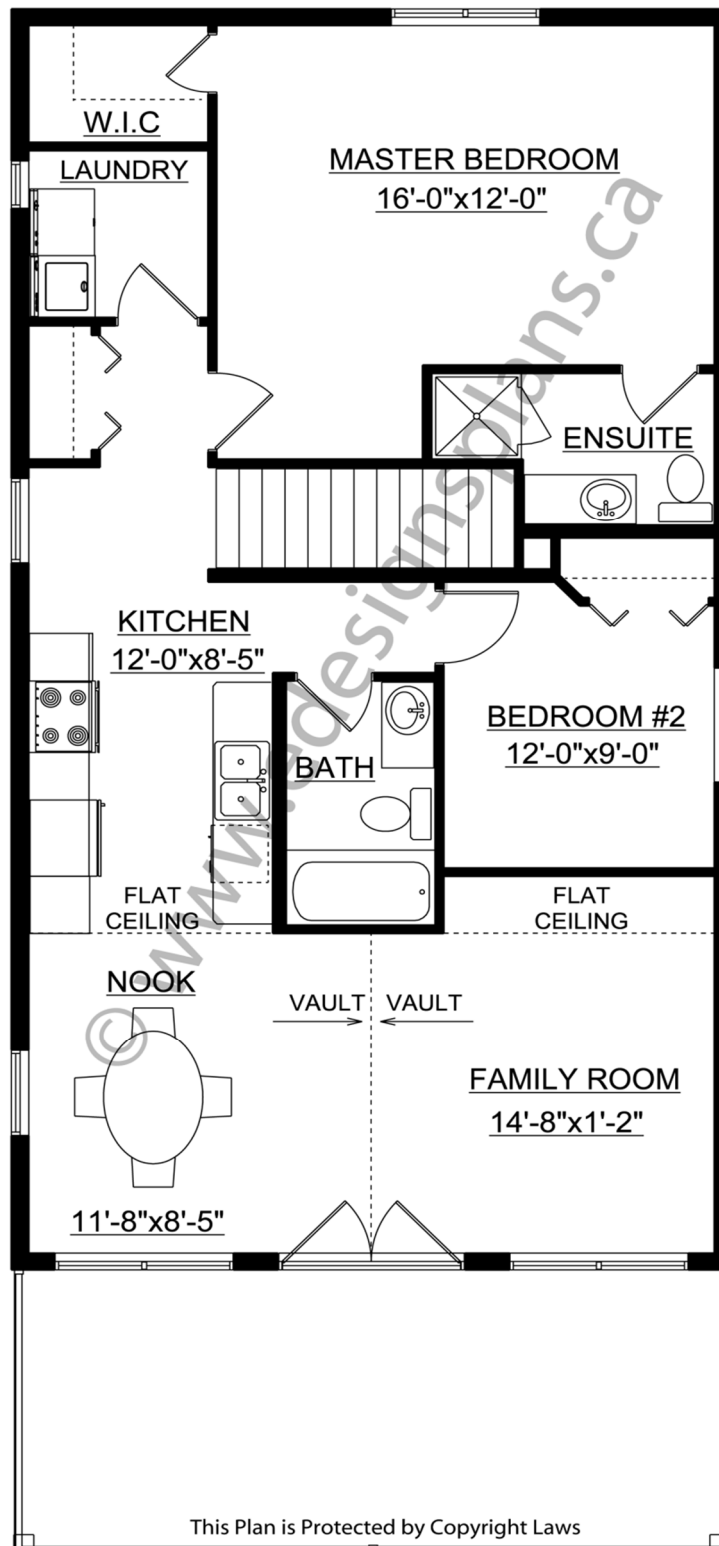
For more information about this plan contact the designer at: [info@edesignsplans.ca](mailto:info@edesignsplans.ca).

Plan 2009440

[www.edesignsplans.ca](http://www.edesignsplans.ca)

[Call Us 1-855-675-1800](tel:1-855-675-1800)

Upper Floor



This Plan is Protected by Copyright Laws

PROTECTED BY COPYRIGHT LAWS.  
PROPERTY OF **E-DESIGNS PLANS INC.**