

E-Designs Plans Inc.

A western Canadian company from Alberta that designs and ships home plans all across Canada, the US, and Overseas.

For more information about this plan contact the designer at: info@edesignsplans.ca.

Plan #: 2009465 Front Elevation

www.edesignsplans.ca

Call Us 1-855-675-1800



Rear Elevation



2-Storey with Walkout & 3-Car Garage

1436 Sq. Ft. Main Floor

1197 Sq. Ft. Second Floor

2633 Sq. Ft. Total Living Area

Width: 91'-8"

Depth: 53'-0"

Bedrooms: 5

Bathrooms: 5

Laundry: 2nd & Lower Floors

Walk-in Pantry: Yes

Office/Den: No

Plan #: 2009465

Exterior Walls:

Foundation:

Special Ceilings:

Fireplace:

Deck(s):

Veranda:

Attached Garage:

Finished Basement Plan:

2x6 x 9 Ft. (Main Floor)

2x6 x 8 Ft. (Second Floor)

9' ICF (Insulated Concrete Form)
(Other Foundations Available)

Second Floor Sitting Room

Yes

Rear

Yes

Yes (3-Car - 10'x8' & 16'x8' Doors)

Yes

2-Storey With Walkout Basement: Need Lots of Room? Then this is a great plan for you. The open design and abundance of windows provides plenty of room to enjoy. The front with covered veranda and grand pillars give this plan a great curb appeal. Upon entering the front foyer you are greeted by the pillars and arches of the great room. Enter a little farther and see the fireplace surrounded by glass from the floor to the ceiling of the second floor. The "U" shaped kitchen has a working island and a lunch bar; also a large walk-in pantry. The master bedroom has a double garden door leading onto the rear deck. There is his and hers walk-in closets entering the 5-piece ensuite. The second floor has 3 large bedrooms with lots of closet space. The 3-piece bath is located by a laundry room. Enjoy a good book in the sitting area with a view through all the glass in the great room wall. The attached garage has a 2-piece bath, and a workshop area with sink. With a 16'x8' and a 10'x8' garage door, you can get any sized vehicle inside. There is also a 10'x8' door in the rear (for ATV, garden equipment, etc). Need more room? Well the walkout basement is totally finished too. The spare room has a double garden door leading out to the patio and a large walk-in closet. A storage area sits beside the 3-piece bath. The mechanical room also has provision for a washer and dryer on this level. The Rec room is large and bright with large windows. There is also an area for a home theater. This plan has something for everyone in the family.

PROTECTED BY COPYRIGHT LAWS.
PROPERTY OF **E-DESIGNS PLANS INC.**

E-Designs Plans Inc.

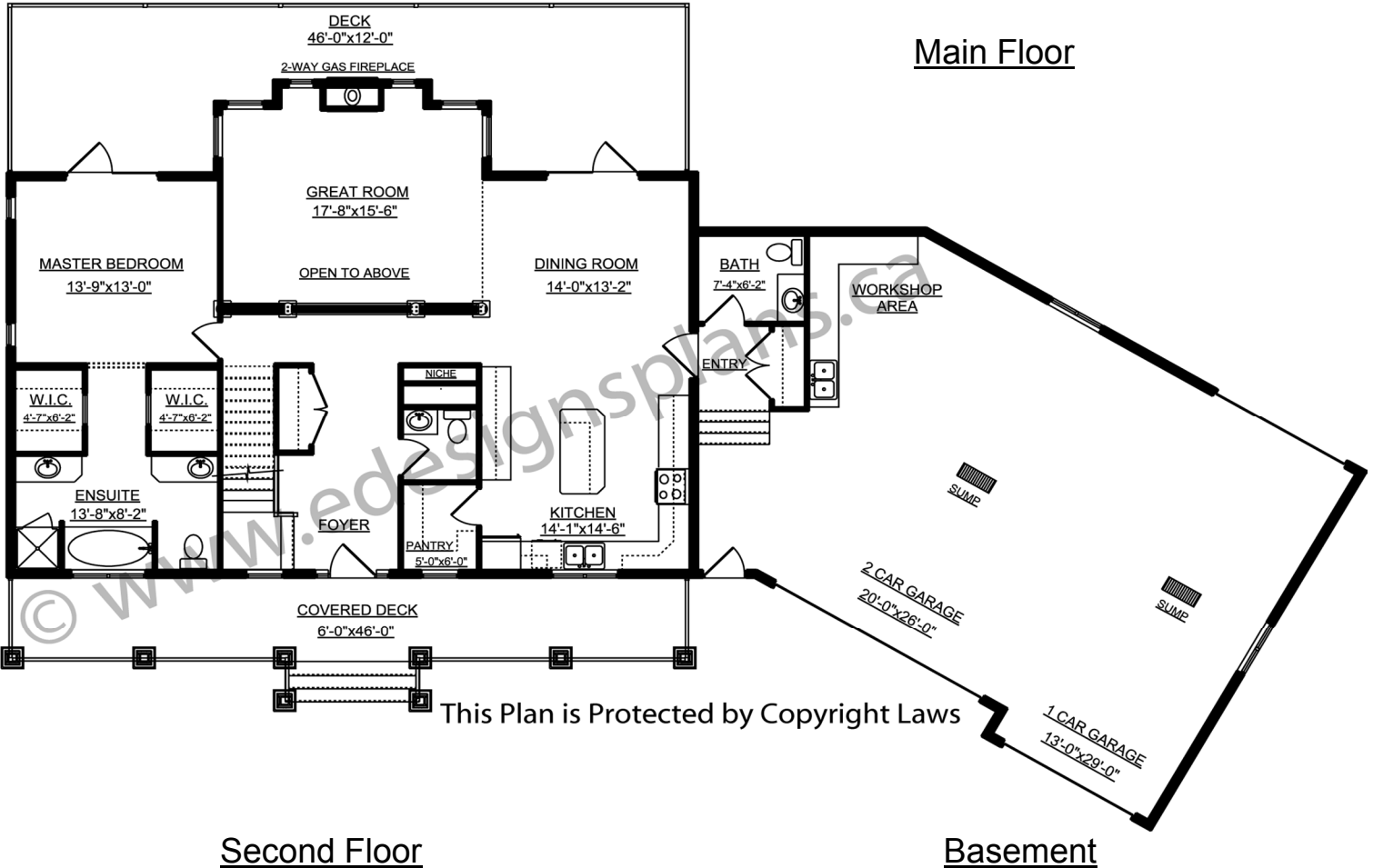
A western Canadian company from Alberta that designs and ships home plans all across Canada, the US, and Overseas.

For more information about this plan contact the designer at: info@edesignsplans.ca.

Plan 2009465

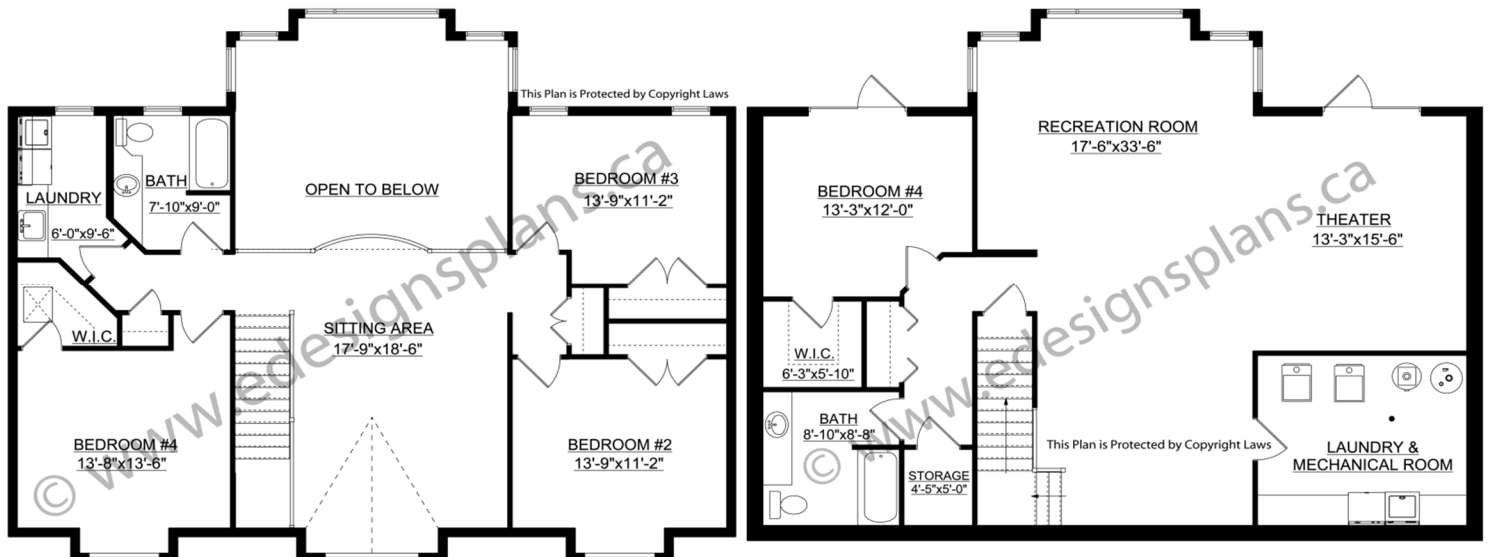
www.edesignsplans.ca

Call Us 1-855-675-1800



Second Floor

Basement



PROTECTED BY COPYRIGHT LAWS.
PROPERTY OF **E-DESIGNS PLANS INC.**