

# *E-Designs Plans Inc.*

A western Canadian company from Alberta that designs and ships home plans all across Canada, the US, and Overseas.

For more information about this plan contact the designer at: [info@edesignsplans.ca](mailto:info@edesignsplans.ca).

**Plan #: 2010504 Front Elevation**

[www.edesignsplans.ca](http://www.edesignsplans.ca)

**Call Us 1-855-675-1800**



## **2-Storey with 2-Car Garage**

1091 Sq. Ft. Main Floor

752 Sq. Ft. Second Floor

1843 Sq. Ft. Total Living Area

Width: 58'-0"

Depth: 37'-0" (plus deck)

Bedrooms: 3

Bathrooms: 2

Main Floor Laundry: Yes

Walk-in Pantry: Yes

Flex Room/Office: Yes

## **Plan #: 2010504**

Exterior Walls:

2x6 x 8 Ft. (Main Floor)

2x6 x 8 Ft. (Second Floor)

Foundation:

4' Concrete Wall

(Other Foundations Available)

Special Ceilings:

Great Room Open to Second Floor

Fireplace:

Yes

Deck(s):

Rear

Veranda:

Yes

Attached Garage:

Yes (2-Car with 16'x8' Door)

Finished Basement Plan:

No

**1843 Sq. Ft. 2-Storey Home.** This country style home will look great on a city lot, acreage, or farm. Enjoy the morning with a coffee on the covered front veranda. Enter the front door and you're in the great room with a ceiling that goes right up to the second floor ceiling. The wood burning fireplace in the corner is sure to provide extra heat for those cooler winter days. The country style kitchen features a corner pantry, and lots of counter and cabinet space. The dining area is big enough for lots of company. The master bedroom is located conveniently next to the 3-piece bath. A door under the upper stairs gives access to the crawl space. The back entry has a walk-in closet and is located next to the laundry room which has a walk through to the garage area. The garage also has an area for a workshop and the laundry room is located here. There is a large deck in the rear. The open staircase in the great room takes you to the second floor in the bonus room area. This room is open to below. There are two nice-sized bedrooms, each with a walk-in closet on this level. A 3-piece bath is located between both bedrooms. This plan would work well as a cottage at the lake.

PROTECTED BY COPYRIGHT LAWS.  
PROPERTY OF **E-DESIGNS PLANS INC.**

# E-Designs Plans Inc.

A western Canadian company from Alberta that designs and ships home plans all across Canada, the US, and Overseas.

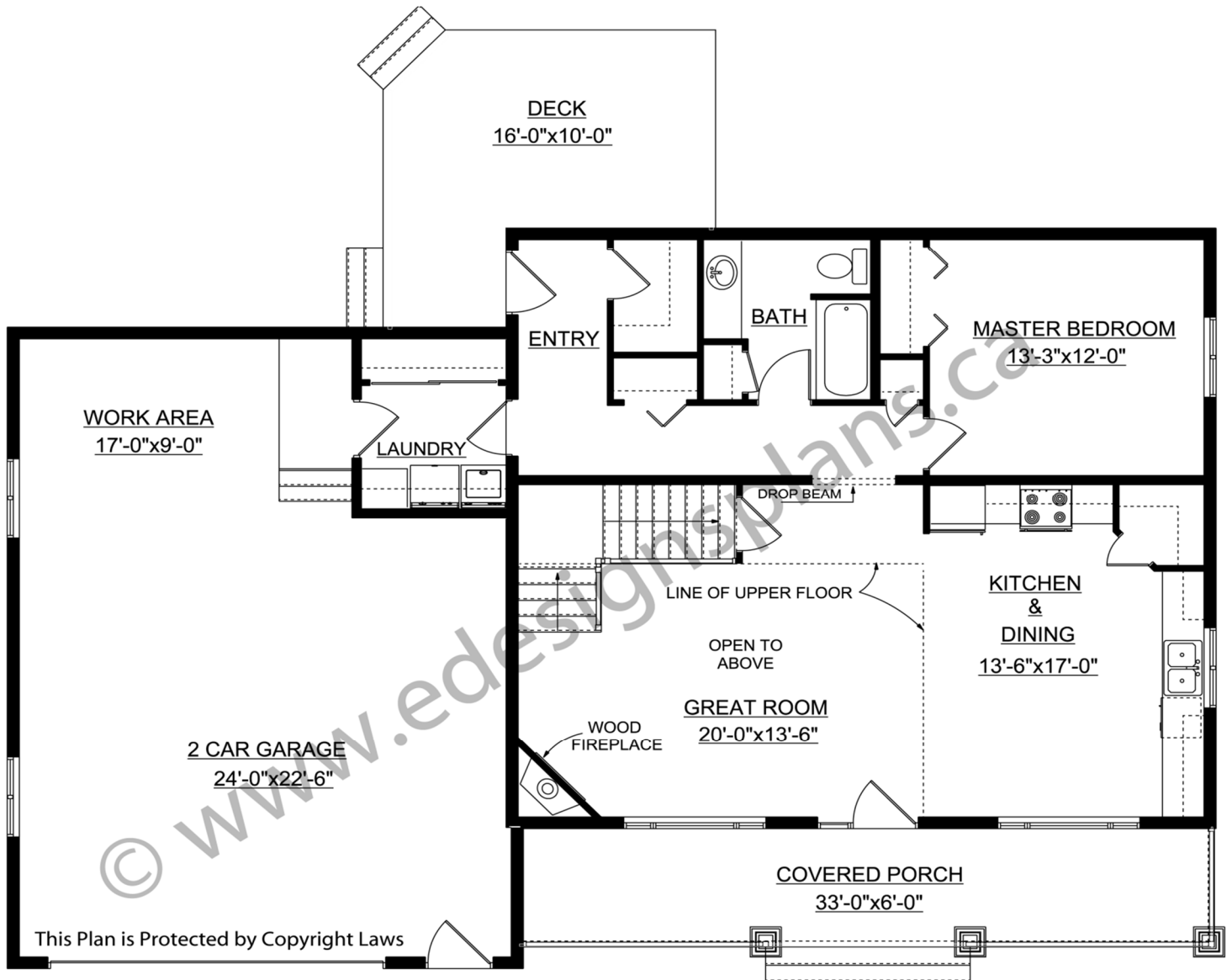
For more information about this plan contact the designer at: [info@edesignsplans.ca](mailto:info@edesignsplans.ca).

Plan 2010504

[www.edesignsplans.ca](http://www.edesignsplans.ca)

[Call Us 1-855-675-1800](tel:1-855-675-1800)

## Main Floor



PROTECTED BY COPYRIGHT LAWS.  
PROPERTY OF **E-DESIGNS PLANS INC.**

# E-Designs Plans Inc.

A western Canadian company from Alberta that designs and ships home plans all across Canada, the US, and Overseas.

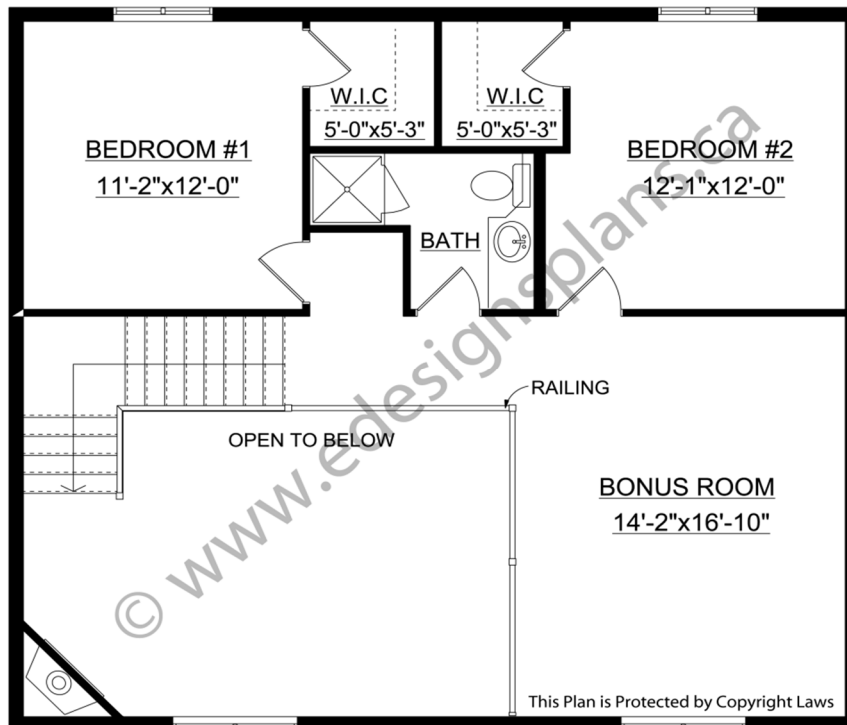
For more information about this plan contact the designer at: [info@edesignsplans.ca](mailto:info@edesignsplans.ca).

Plan 2010504

[www.edesignsplans.ca](http://www.edesignsplans.ca)

[Call Us 1-855-675-1800](tel:1-855-675-1800)

## Second Floor



PROTECTED BY COPYRIGHT LAWS.  
PROPERTY OF **E-DESIGNS PLANS INC.**