

# E-Designs Plans Inc.

A western Canadian company from Alberta that designs and ships home plans all across Canada, the US, and Overseas.

For more information about this plan contact the designer at: [info@edesignsplans.ca](mailto:info@edesignsplans.ca).

**Plan #: 2011566 Front Elevation**

[www.edesignsplans.ca](http://www.edesignsplans.ca)

**Call Us 1-855-675-1800**



**Rear Elevation**

## **Country Style Home or Cottage Plan**

**1600 Sq. Ft. Upper Floor**

Width:	32'-0" (plus stair)
Depth:	60'-0" (incl deck)
Bedrooms:	3
Bathrooms:	4
Laundry:	Second Floor
Walk-in Pantry:	No
Office/Studio:	Yes
Finished Basement Plan:	No

## **Plan #: 2011566**

Exterior Walls:	2x6 x 10 Ft. (Main Floor) 2x6 x 8 Ft. (Second Floor)
Foundation:	4' ICF (Insulated Concrete Form) (Other Foundations Available)
Special Ceilings:	Vaulted
Fireplace:	No
Deck(s):	Front (Covered)
Veranda:	No
Attached Garage:	Yes (2-Car with 10'x8' Doors)

**Country or Recreational Style House Plan:** The lower level has a large garage with two 10'x8' garage doors which are protected by the covered deck above. A covered shed for extra storage is attached to the side. A two-piece bath is conveniently located in the garage. There is a separate entrance into the area in the rear. This could be used as a workshop, studio, a home based business, etc. There are two large windows for lots of natural lighting. The mechanical room for the upper floor and a two-piece bath is in this back room as well. The upper floor is accessible from the front deck or the side entrance. The large "L" shaped kitchen has a corner walk-in pantry and a working island which are all open to the dining and great room. Lots of windows, including rake style windows, which accentuate the vaulted ceiling. The laundry room is conveniently located. A three-piece bath is located close to all the large bedrooms. The master bedroom features a walk-in closet and a two-piece bath. A great floor plan for the country or lake, where you can store your water toys or ATV's.

PROTECTED BY COPYRIGHT LAWS.  
PROPERTY OF **E-DESIGNS PLANS INC.**

# E-Designs Plans Inc.

A western Canadian company from Alberta that designs and ships home plans all across Canada, the US, and Overseas.

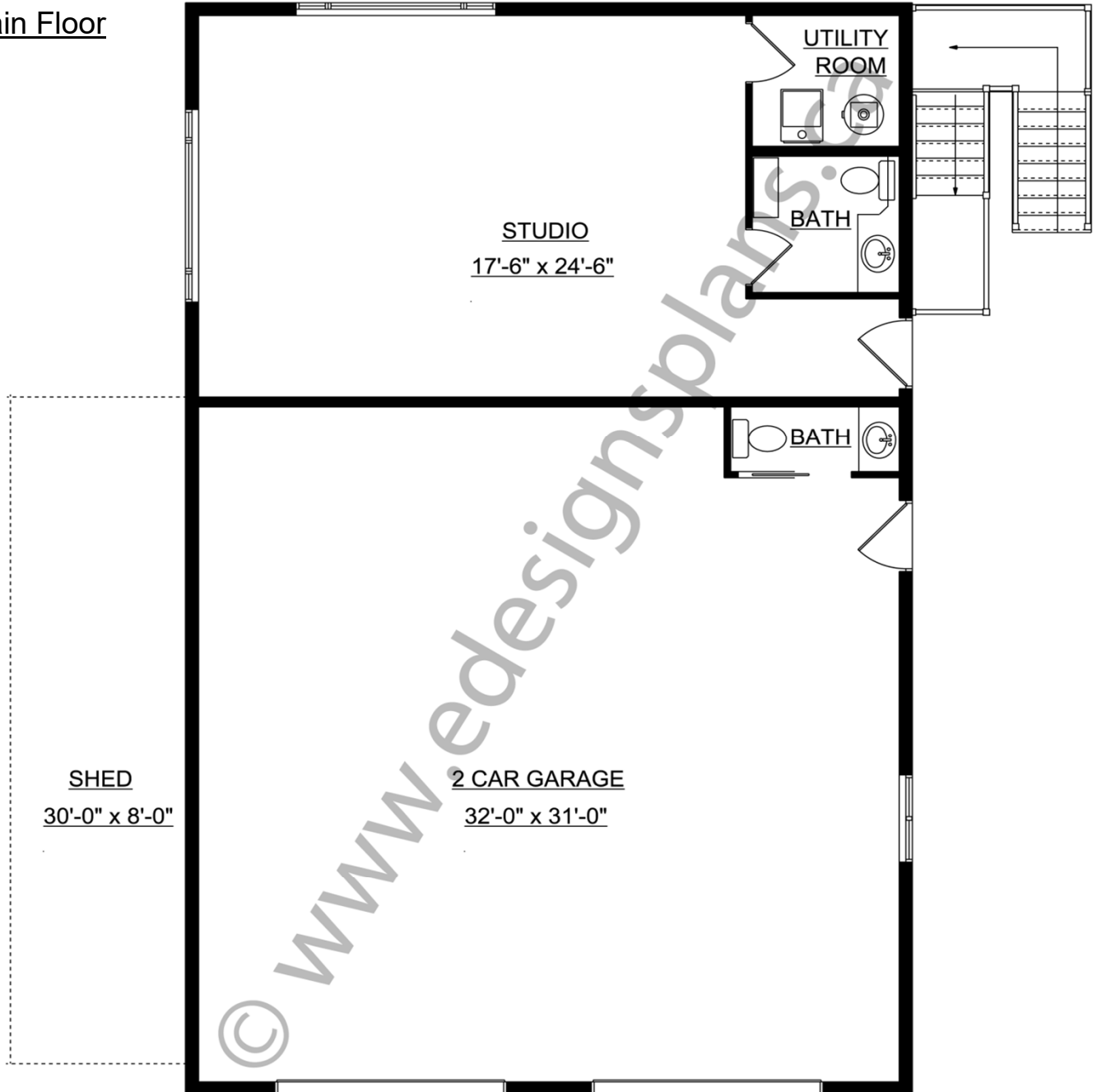
For more information about this plan contact the designer at: [info@edesignsplans.ca](mailto:info@edesignsplans.ca).

Plan 2011566

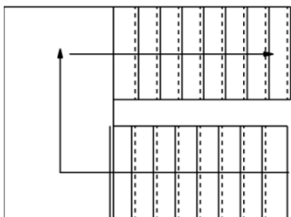
[www.edesignsplans.ca](http://www.edesignsplans.ca)

[Call Us 1-855-675-1800](tel:1-855-675-1800)

Main Floor



This Plan is Protected by Copyright Laws



PROTECTED BY COPYRIGHT LAWS.  
PROPERTY OF **E-DESIGNS PLANS INC.**

# E-Designs Plans Inc.

A western Canadian company from Alberta that designs and ships home plans all across Canada, the US, and Overseas.

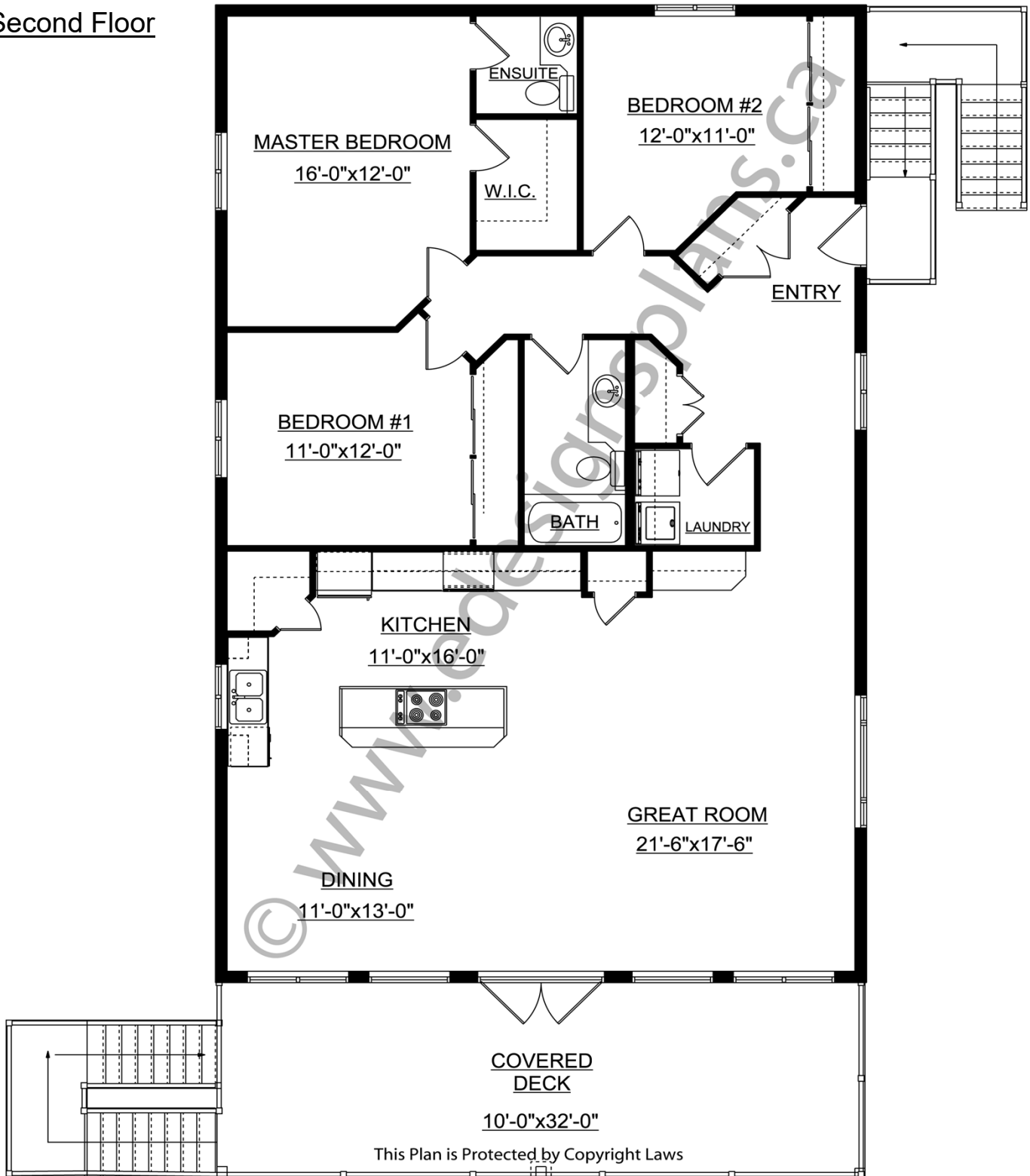
For more information about this plan contact the designer at: [info@edesignsplans.ca](mailto:info@edesignsplans.ca).

Plan 2011566

[www.edesignsplans.ca](http://www.edesignsplans.ca)

Call Us 1-855-675-1800

Second Floor



This Plan is Protected by Copyright Laws

PROTECTED BY COPYRIGHT LAWS.  
PROPERTY OF **E-DESIGNS PLANS INC.**