

E-Designs Plans Inc.

A western Canadian company from Alberta that designs and ships home plans all across Canada, the US, and Overseas.

For more information about this plan contact the designer at: info@edesignsplans.ca.

Plan #: 2011588 Front Elevation

www.edesignsplans.ca

Call Us 1-855-675-1800



Rear Elevation

2-Storey Cottage with Walkout Basement

1520 Sq. Ft. Total Living Area
(Main Floor & Loft)

Width: 30'-0" (plus deck)
 Depth: 40'-0" (plus deck)
 Bedrooms: 2
 Bathrooms: 2
 Laundry: Lower Floor
 Walk-in Pantry: No
 Office/Den: No

Plan #: 2011588

Exterior Walls: 2x6 x 8 Ft. (Main Floor)
 2x6 x 8 Ft. (Second Floor)
 Foundation: 9' ICF (Insulated Concrete Form)
 (Other Foundations Available)
 Special Ceilings: Vaulted Front to Back
 Fireplace: Yes
 Deck(s): Front & Side
 Attached Garage: No
 Finished Basement Plan: Yes

2-Storey Cottage with Walkout Basement. This home will look great overlooking the lake this summer....and what a view with all the large windows. A nice design with a large deck area to enjoy the outdoors. This home features two bedrooms on the main floor along with a 3-piece bath. An "L" shaped kitchen with an island and lunch counter is open to the dining and great rooms, which have a great view from all the windows on three sides. The great room also features a fireplace and the ceiling is open to the second floor loft area. An open staircase takes you to the open loft area that overlooks the great room. The loft has been designed as a "Flex" Room that could be used for extra company or even a studio. The walkout basement has lots of natural lighting and double garden doors that lead to a covered patio. A simple, yet well designed home, or a home away from home.

PROTECTED BY COPYRIGHT LAWS.
PROPERTY OF *E-DESIGNS PLANS INC.*

E-Designs Plans Inc.

A western Canadian company from Alberta that designs and ships home plans all across Canada, the US, and Overseas.

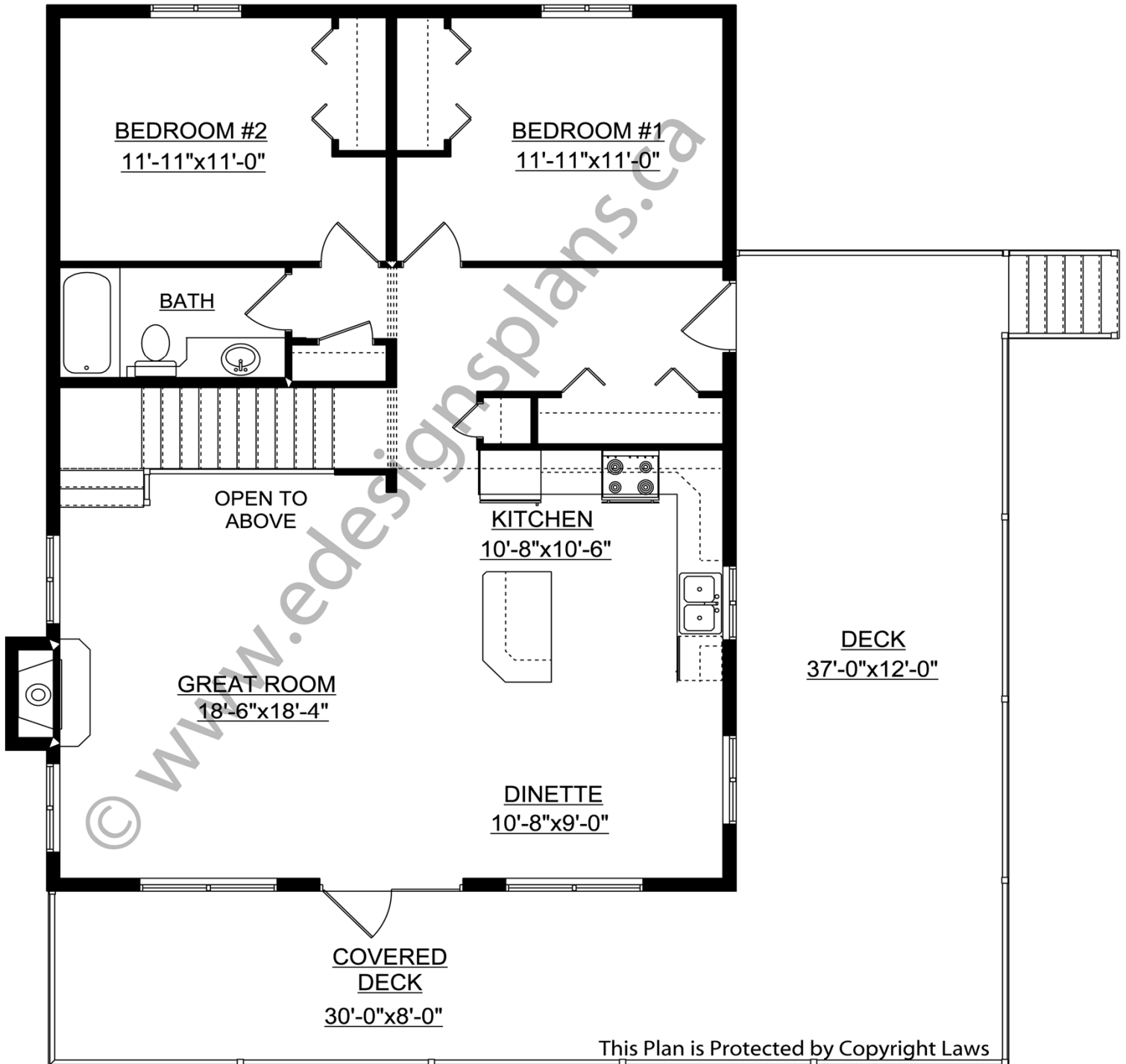
For more information about this plan contact the designer at: info@edesignsplans.ca.

Plan 2011588

www.edesignsplans.ca

[Call Us 1-855-675-1800](tel:1-855-675-1800)

Main Floor



This Plan is Protected by Copyright Laws

PROTECTED BY COPYRIGHT LAWS.
PROPERTY OF **E-DESIGNS PLANS INC.**

E-Designs Plans Inc.

A western Canadian company from Alberta that designs and ships home plans all across Canada, the US, and Overseas.

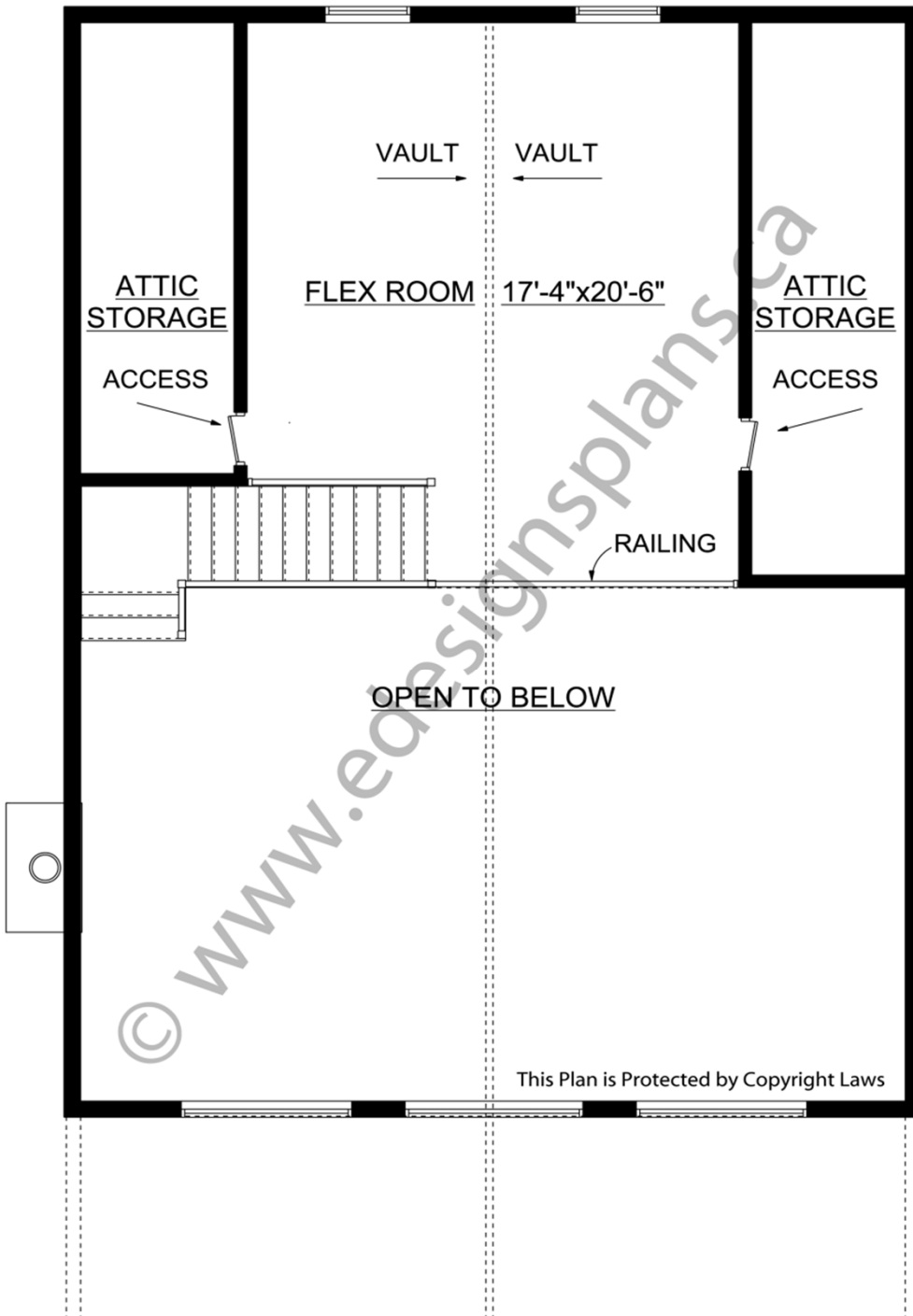
For more information about this plan contact the designer at: info@edesignsplans.ca.

Plan 2011588

www.edesignsplans.ca

[Call Us 1-855-675-1800](tel:1-855-675-1800)

Second Floor



This Plan is Protected by Copyright Laws

PROTECTED BY COPYRIGHT LAWS.
PROPERTY OF **E-DESIGNS PLANS INC.**