

E-Designs Plans Inc.

A western Canadian company from Alberta that designs and ships home plans all across Canada, the US, and Overseas.

For more information about this plan contact the designer at: info@edesignsplans.ca.

Plan #: 2011598 Front Elevation

www.edesignsplans.ca

Call Us 1-855-675-1800



Rear Elevation



2-Storey with 3-Car Garage

1148 Sq. Ft. Main Floor

1122 Sq. Ft. Second Floor

2270 Sq. Ft. Total Living Area

Width: 68'-0"
Depth: 48'-0"
Bedrooms: 3
Bathrooms: 3
Main Floor Laundry: Yes
Walk-in Pantry: Yes
Office/Den: Yes

Plan #: 2011598

Exterior Walls: 2x6 x 9 Ft. (Main Floor)
2x6 x 8 Ft. (Second Floor)
Foundation: 9' ICF (Insulated Concrete Form)
(Other Foundations Available)
Special Ceilings: Vaulted Living Room
Fireplace: Yes
Deck(s): Rear (Covered)
Veranda: No
Attached Garage: Yes (3-Car with 10'x8' Doors)
Finished Basement Plan: No

Perfect 2-Storey plan for an acreage, farmhouse or large town lot. From the front foyer you enter into the living room which has a vaulted ceiling to the second floor. A corner fireplace in the living room for those cooler nights. The dining room is open to the "U" shaped kitchen. A double garden door from the dining room leads out to a covered rear deck. The kitchen has plenty of cabinet & counter space. A lunch counter is also available. Just off the kitchen is a corner walk-in pantry. Down the hall is the laundry room. There is a den/office area with a 2-piece bath beside the kitchen. Up the staircase to the second floor common area where it is open to below. A set of double french doors lead into the large master bedroom. A walk-in closet and a 4-piece ensuite which includes a custom shower. There are two more bedrooms and a big 3-piece bath. If you need more room, the basement is undeveloped except for the mechanical room. Lots of possibilities here. Dad will love his large new garage with three 10'x8' garage doors and room for a work bench.

E-Designs Plans Inc.

A western Canadian company from Alberta that designs and ships home plans all across Canada, the US, and Overseas.

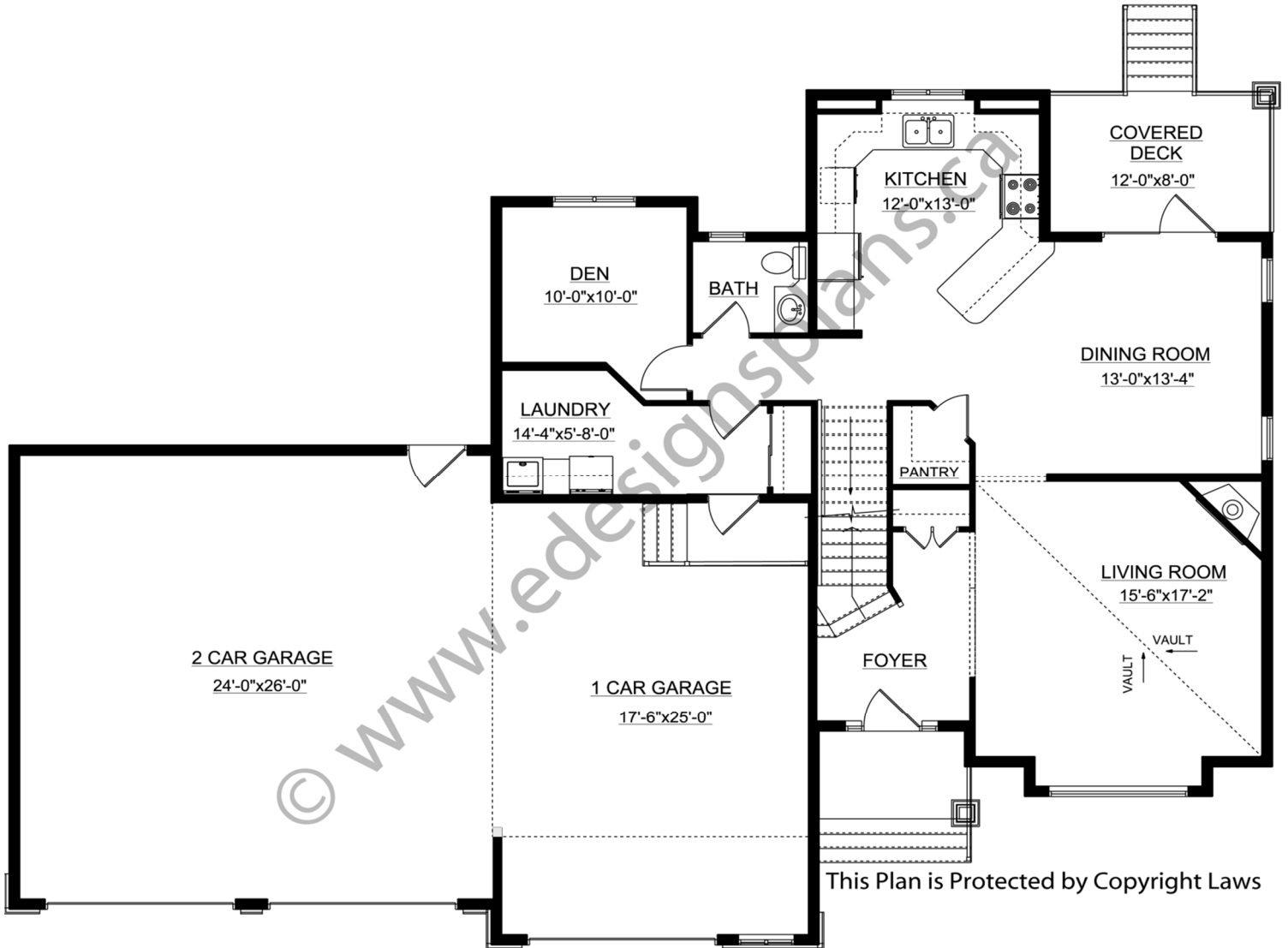
For more information about this plan contact the designer at: info@edesignsplans.ca.

Plan 2011598

www.edesignsplans.ca

Call Us 1-855-675-1800

Main Floor



PROTECTED BY COPYRIGHT LAWS.
PROPERTY OF **E-DESIGNS PLANS INC.**

E-Designs Plans Inc.

A western Canadian company from Alberta that designs and ships home plans all across Canada, the US, and Overseas.

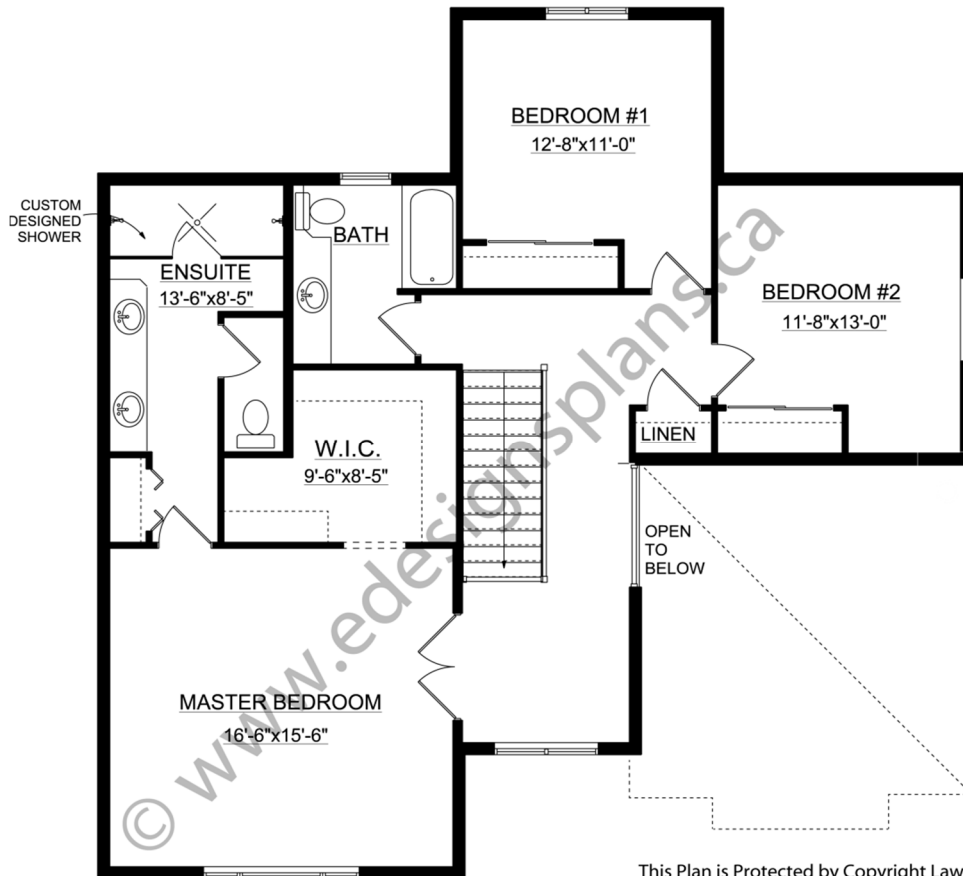
For more information about this plan contact the designer at: info@edesignsplans.ca.

Plan 2011598

www.edesignsplans.ca

[Call Us 1-855-675-1800](tel:1-855-675-1800)

Second Floor



This Plan is Protected by Copyright Laws