

E-Designs Plans Inc.

A western Canadian company from Alberta that designs and ships home plans all across Canada, the US, and Overseas.

For more information about this plan contact the designer at: info@edesignsplans.ca.

Plan #: 2012608 Front Elevation

www.edesignsplans.ca

[Call Us 1-855-675-1800](tel:1-855-675-1800)



1-1/2 Storey with Walkout

989 Sq. Ft. Main Floor

481 Sq. Ft. Second Floor

1470 Sq. Ft. Total Living Area

Width: 36'-0" (incl. deck)

Depth: 44'-0" (incl. deck)

Bedrooms: 2

Bathrooms: 2

Main Floor Laundry: No

Walk-in Pantry: No

Office/Den: No

Plan #: 2012608

Exterior Walls:

Foundation:

Special Ceilings:

Fireplace:

Deck(s):

Veranda:

Attached Garage:

Finished Basement Plan:

2x6 x 10 Ft. (Main Floor)

2x6 x 10 Ft. (Second Floor)

8' Concrete Wall

(Other Foundations Available)

Vaulted

No

Front & Side (Covered)

No

No

No

Your Retreat in the Mountains or at the Lake. This plan has all your needs covered. If you have view from your property, then this plan with all the windows will allow a view from all three floors. From the covered side deck you enter the mudroom which is conveniently located next to the 3-piece bath. The guest room is a nice size. The "U" shaped kitchen has lots cabinet and counter space. The dining & living room are open to the vaulted ceiling. Double garden doors lead out to the covered front deck. An open staircase takes you up to the sitting area on the second floor. From here it is open to below and also has the view through the rake head windows in the front. The large master bedroom is open to the sitting area. Also a three piece ensuite with a 60"x40" shower. Back on the main floor, there is a staircase leading down to the walkout basement area. This is undeveloped so you can design it just the way you like. This home would look great anywhere.

PROTECTED BY COPYRIGHT LAWS.
PROPERTY OF **E-DESIGNS PLANS INC.**

E-Designs Plans Inc.

A western Canadian company from Alberta that designs and ships home plans all across Canada, the US, and Overseas.

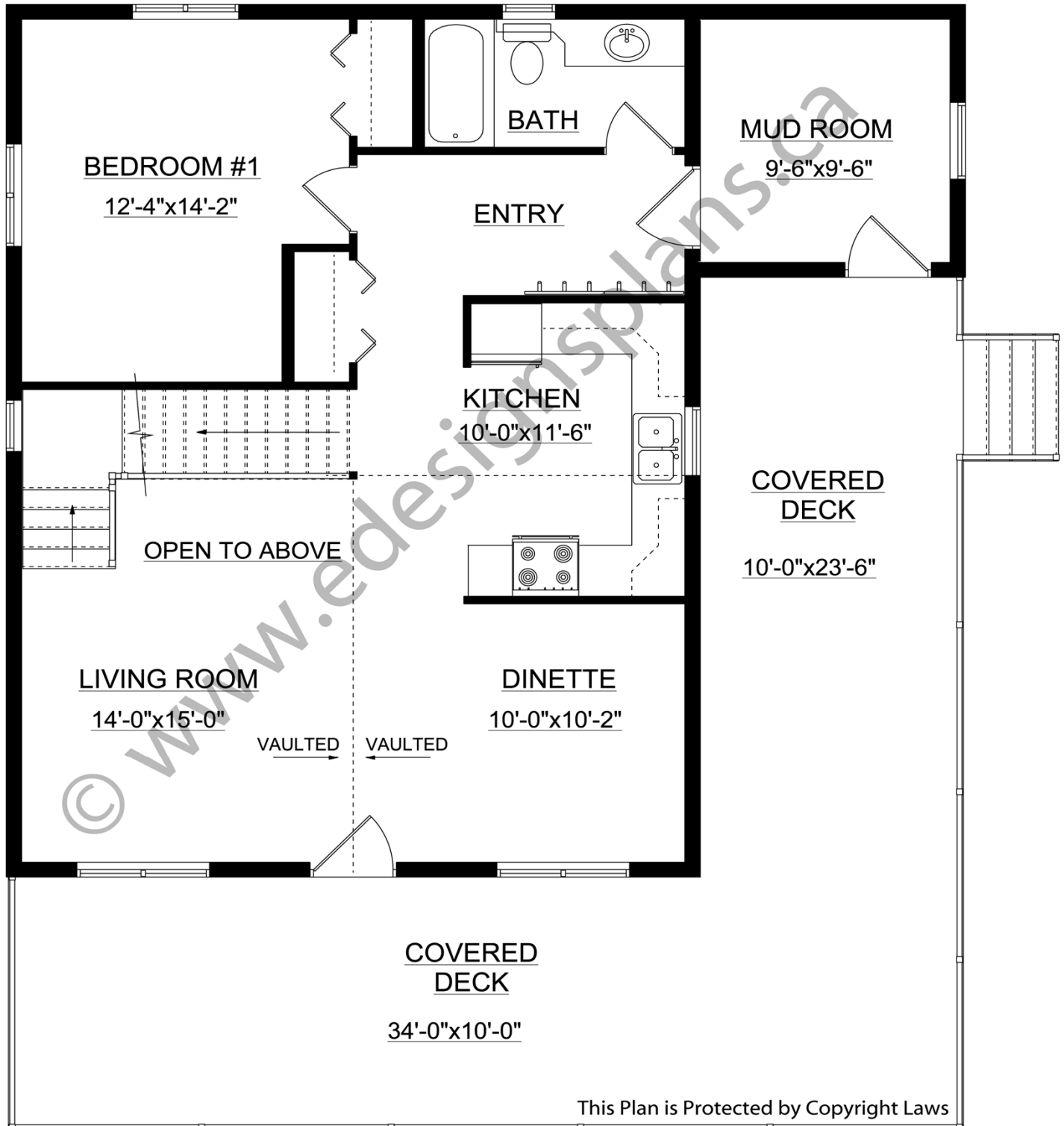
For more information about this plan contact the designer at: info@edesignsplans.ca.

Plan 2012608

www.edesignsplans.ca

[Call Us 1-855-675-1800](tel:1-855-675-1800)

Main Floor



PROTECTED BY COPYRIGHT LAWS.
PROPERTY OF **E-DESIGNS PLANS INC.**

E-Designs Plans Inc.

A western Canadian company from Alberta that designs and ships home plans all across Canada, the US, and Overseas.

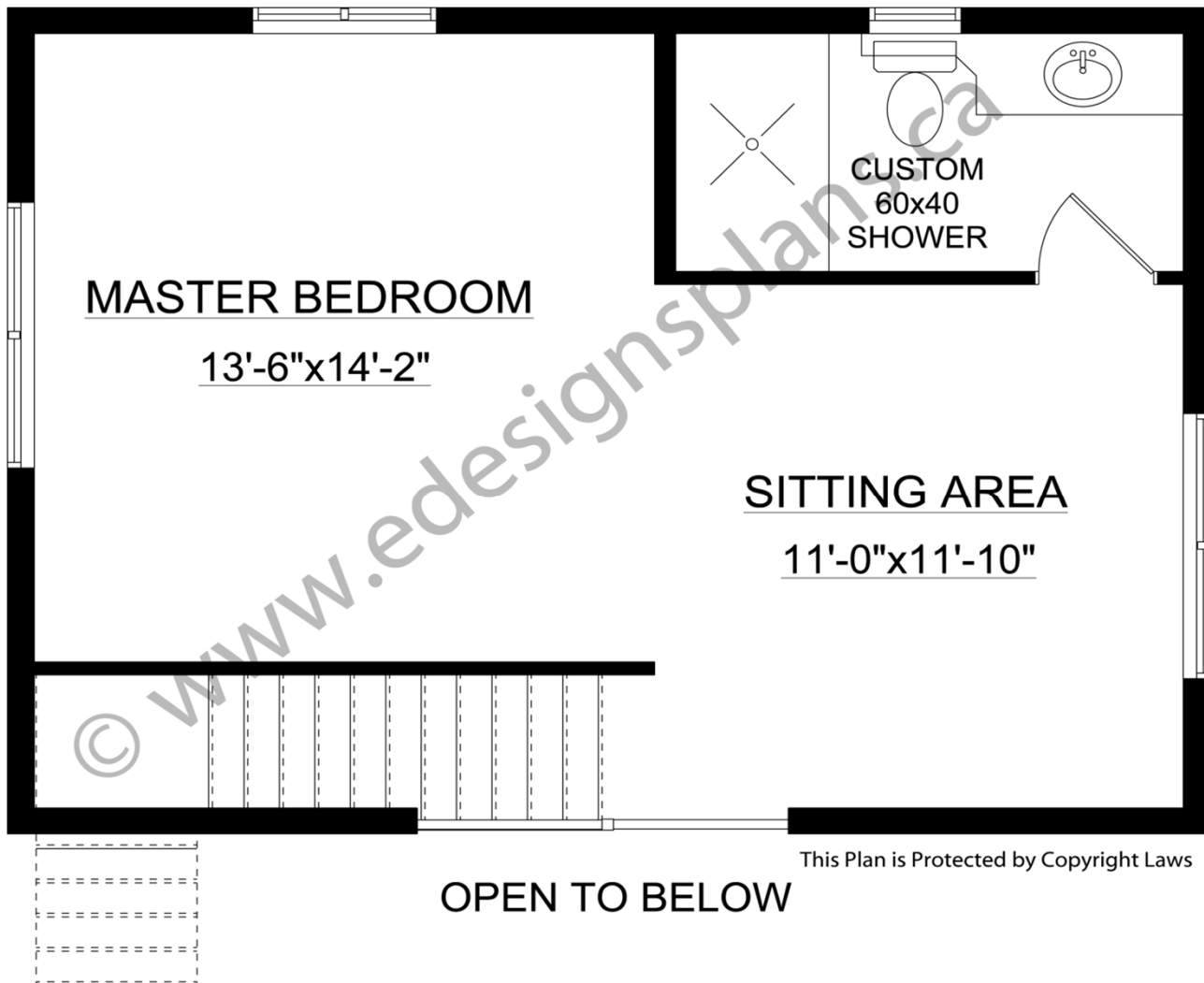
For more information about this plan contact the designer at: info@edesignsplans.ca.

Plan 2012608

www.edesignsplans.ca

[Call Us 1-855-675-1800](tel:1-855-675-1800)

Second Floor



This Plan is Protected by Copyright Laws