

# E-Designs Plans Inc.

A western Canadian company from Alberta that designs and ships home plans all across Canada, the US, and Overseas.

For more information about this plan contact the designer at: [info@edesignsplans.ca](mailto:info@edesignsplans.ca).

**Plan #: 2012616 Front Elevation**

[www.edesignsplans.ca](http://www.edesignsplans.ca)

**Call Us 1-855-675-1800**



**Rear Elevation**



**2-Storey Ranch Style with 3-Car Garage**

1969 Sq. Ft. Main Floor

955 Sq. Ft. Second Floor

2924 Sq. Ft. Total Living Area

Width: 95'-6"

Depth: 50'-0" (plus deck)

Bedrooms: 3

Bathrooms: 3

Main Floor Laundry: Yes

Walk-in Pantry: Yes

Office/Den: No

**Plan #: 2012616**

Exterior Walls:

2x6 x 9 Ft. (Main Floor)

2x6 x 8 Ft. (Second Floor)

Foundation:

9' ICF (Insulated Concrete Form)  
(Other Foundations Available)

Special Ceilings:

Vaulted on Second Floor

Fireplace:

Yes

Deck(s):

Rear

Veranda:

Yes

Attached Garage:

Yes (3-Car with 10'x8' Doors)

Finished Basement Plan:

No

**2-Storey Ranch Style with 3-Car Garage.** Perfect for an acreage or farmhouse. From the front foyer, you enter into the great room and kitchen area, which is nice and open. A gas fireplace in the living room is practical for those cooler nights. The kitchen has a full size pantry with an eating counter as well as an island for added counter space. The U-shaped breakfast nook allows for lots of sunlight and exits onto the rear deck. It also has a separate dining room just off the main entrance. Main floor master bedroom and laundry is one of the benefits of this plan, along with an additional bedroom on the main floor, which could be converted to an office if preferred. The master bedroom has a walk-in closet as well as a 4-piece ensuite. Up the staircase to the second floor leads to a vaulted media room area which is partially open to below. It also houses an additional bedroom that could be converted to an office or used as a nanny suite. The dormers on the second floor have built-in window seats if you're looking for a spot for some peace and quiet, or a great view. If you need more room, the basement is undeveloped except for the mechanical area. More bedrooms or common areas could be developed there. A huge 3-car garage is great for those extra vehicles with large 10'x8' doors. It also has lots of room for a nice workshop area. There is a separate entrance to the basement from the garage for added convenience.

PROTECTED BY COPYRIGHT LAWS.  
PROPERTY OF **E-DESIGNS PLANS INC.**

# E-Designs Plans Inc.

A western Canadian company from Alberta that designs and ships home plans all across Canada, the US, and Overseas.

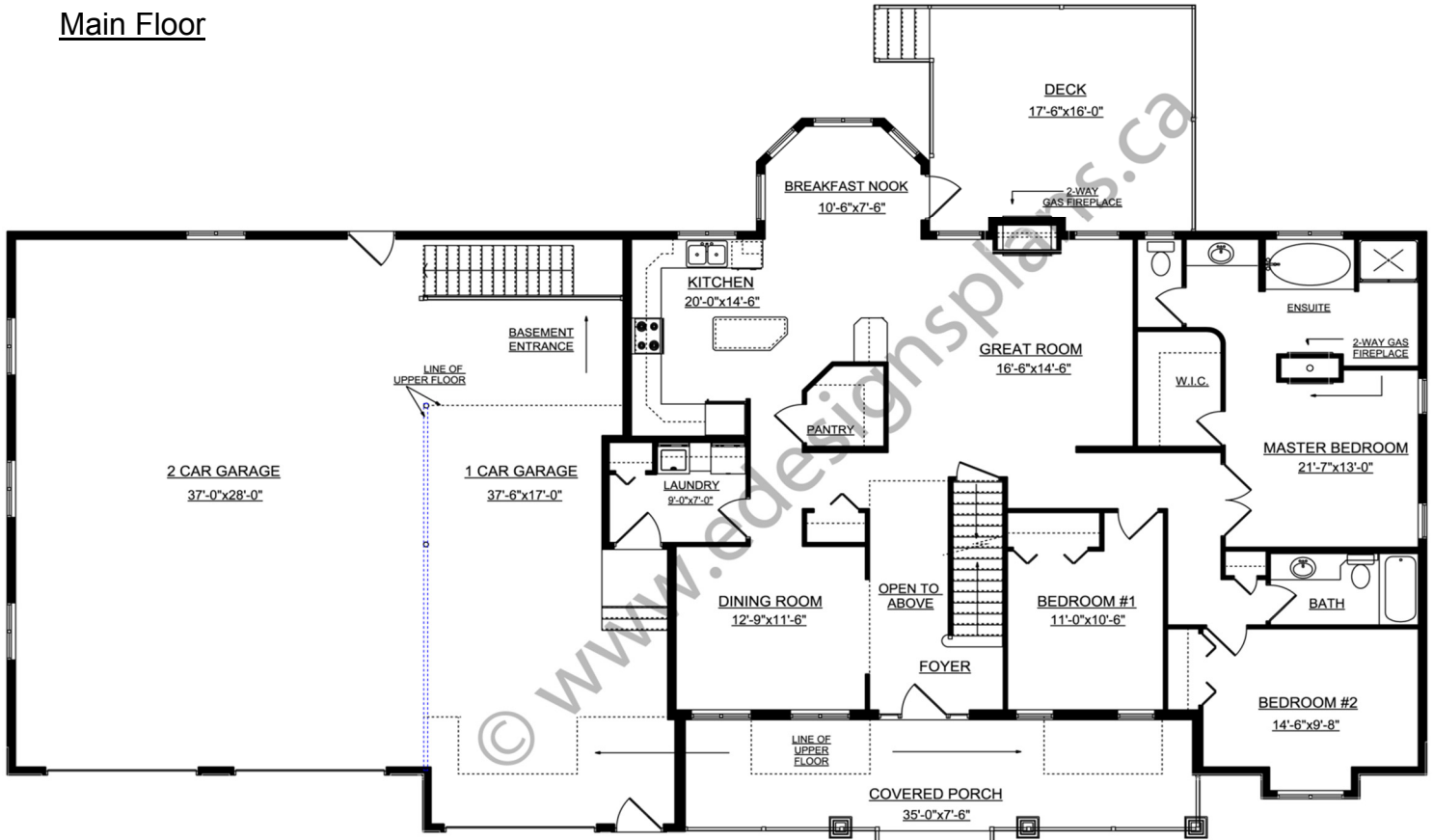
For more information about this plan contact the designer at: [info@edesignsplans.ca](mailto:info@edesignsplans.ca).

Plan 2012616

[www.edesignsplans.ca](http://www.edesignsplans.ca)

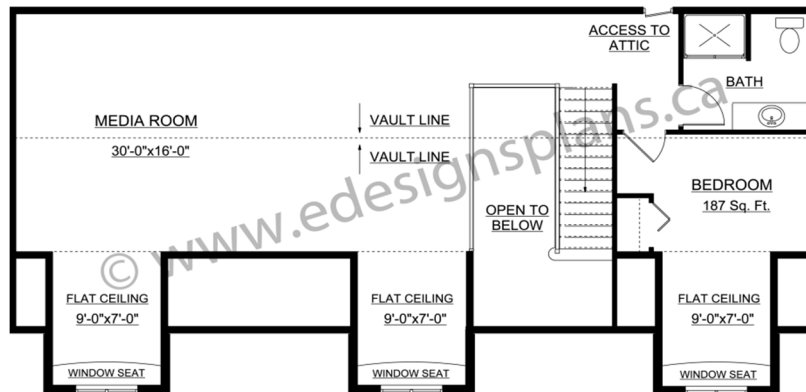
Call Us 1-855-675-1800

## Main Floor



This Plan is Protected by Copyright Laws

## Second Floor



This Plan is Protected by Copyright Laws

PROTECTED BY COPYRIGHT LAWS.  
PROPERTY OF **E-DESIGNS PLANS INC.**