

E-Designs Plans Inc.

A western Canadian company from Alberta that designs and ships home plans all across Canada, the US, and Overseas.

For more information about this plan contact the designer at: info@edesignsplans.ca.

Plan #: 2012624 Front Elevation

www.edesignsplans.ca

Call Us 1-855-675-1800



Rear Elevation

2-Storey with Single Car Garage

857 Sq. Ft. Main Floor

917 Sq. Ft. Second Floor

1774 Sq. Ft. Total Living Area

Width: 48'-0" (plus deck)

Depth: 28'-0"

Bedrooms: 2

Bathrooms: 2

Main Floor Laundry: Yes

Walk-in Pantry: Yes

Office/Den: No

Plan #: 2012624

Exterior Walls:

Foundation:

Special Ceilings:

Fireplace:

Deck(s):

Veranda:

Attached Garage:

Finished Basement Plan:

2x6 x 9 Ft. (Main Floor)

2x6 x 8 Ft. (Second Floor)

Concrete Slab on 4' ICF
(Other Foundations Available)

Vaulted Bonus Room

No

Rear

No

Yes (1-Car with 10'x7' Door)

No

2-Storey with Single Car Garage. This 2-Storey makes great use of space. Its U-shaped kitchen boasts a full size pantry. An open living room and dinette area leaves ample room for furniture, with sliding doors leading to a walkout patio. The master bedroom is on the main floor with two side-by-side closets. Main floor laundry. Access to the mechanical room is from the single car garage, which has a large 10'x7' overhead door. The stairs leads to an extra bedroom, bathroom, closet, and large bonus room area, with access to attic storage. An upper deck is accessible from the bonus room. A perfect plan for an acreage or a lake lot.

PROTECTED BY COPYRIGHT LAWS.
PROPERTY OF **E-DESIGNS PLANS INC.**

E-Designs Plans Inc.

A western Canadian company from Alberta that designs and ships home plans all across Canada, the US, and Overseas.

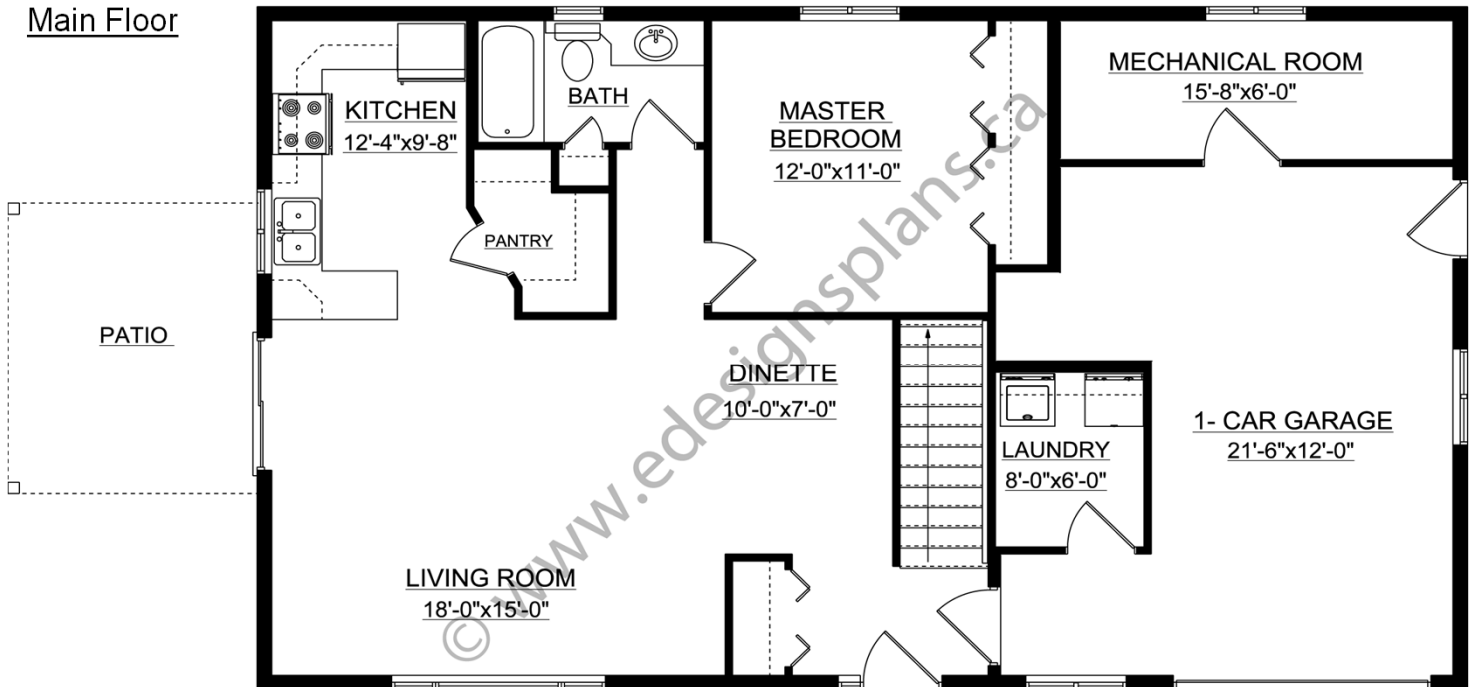
For more information about this plan contact the designer at: info@edesignsplans.ca.

Plan 2012624

www.edesignsplans.ca

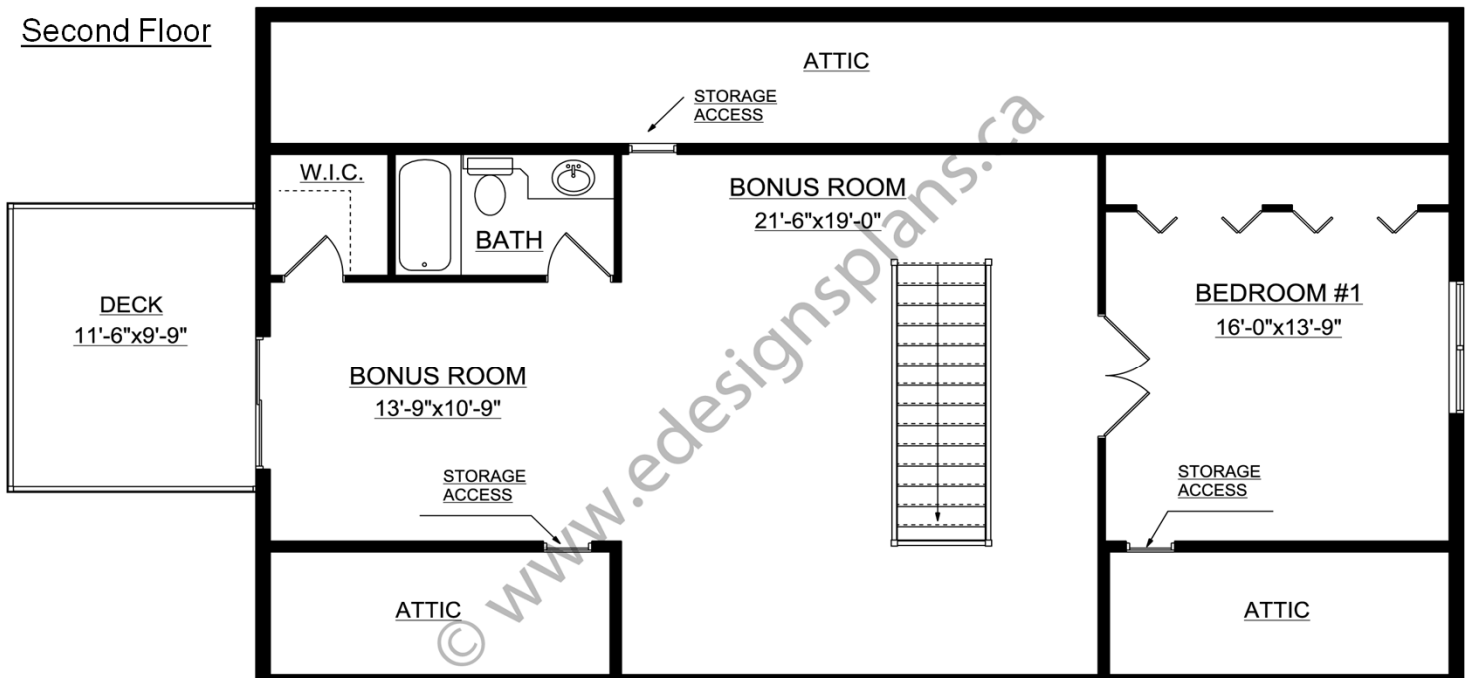
Call Us 1-855-675-1800

Main Floor



This Plan is Protected by Copyright Laws

Second Floor



This Plan is Protected by Copyright Laws

PROTECTED BY COPYRIGHT LAWS.
PROPERTY OF **E-DESIGNS PLANS INC.**