

E-Designs Plans Inc.

A western Canadian company from Alberta that designs and ships home plans all across Canada, the US, and Overseas.

For more information about this plan contact the designer at: info@edesignsplans.ca.

Plan #: 2013683 Front Elevation

www.edesignsplans.ca

[Call Us 1-855-675-1800](tel:1-855-675-1800)



Rear Elevation



2-Storey with 3-Car Garage

1296 Sq. Ft. Main Floor

1518 Sq. Ft. Second Floor

2814 Sq. Ft. Total Living Area

Width: 75'-0"

Depth: 52'-0" (Plus Rear Deck)

Bedrooms: 4

Bathrooms: 2 & a Half Bath

Main Floor Laundry: No

Walk-in Pantry: Yes

Office/Den: Yes

Plan #: 2013683

Exterior Walls:

2x6 x 9 Ft. (Main Floor)

2x6 x 8 Ft. (Second Floor)

Foundation:

9' Concrete Wall

(Other Foundations Available)

Special Ceilings:

None

Fireplace:

Yes

Deck(s):

Rear

Veranda:

Yes

Attached Garage:

Yes (3-Car with 10'x8' Doors)

Finished Basement Plan:

No

2-Storey with 3-Car Garage. This plan has 4 craftsman style posts on the front with a full covered veranda for a great country-style look. Great for the farm or acreage. From the front foyer, there is a huge mudroom/laundry room to the right, convenient for dropping off dirty clothes. To the left you enter through double french doors into the office/den area. Or enter right into the mudroom through the garage. Access to the large walk-through pantry is also available from the mudroom entrance. The kitchen has a huge island with an extra sink and eating bar that seats five. Enjoy the gas fireplace in the living room on those cooler nights. Exit the dining room onto the rear deck. Up the stairs takes you to the bedroom area as well as a vaulted bonus room over the garage. A vast master bedroom is designed on the second floor with 5-piece ensuite and walk-in closet. Three more bedrooms on this floor as well, two of which are extended out the front for additional space, one with a walk-in closet. The laundry room is conveniently located on the second floor, too. The garage has one drive-through bay convenient for the riding lawn mower, a small tractor, or ATV storage. All three garage doors on the front are 10'x8' in size.

E-Designs Plans Inc.

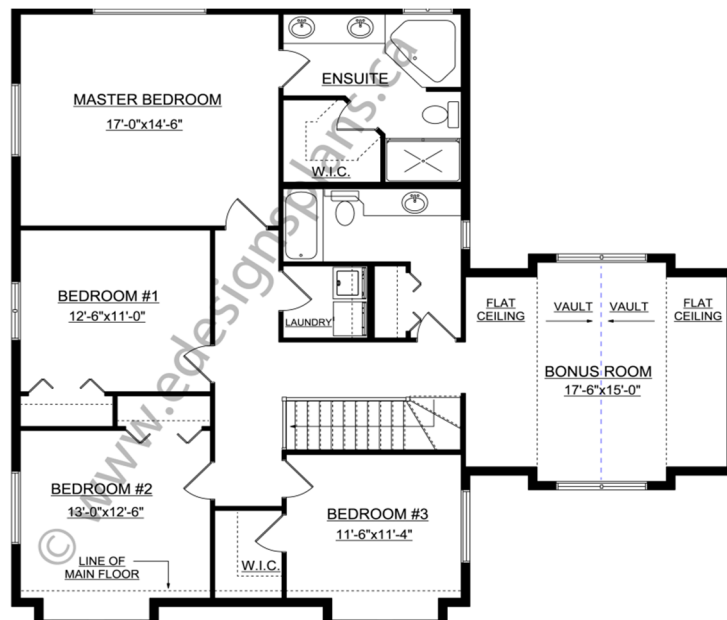
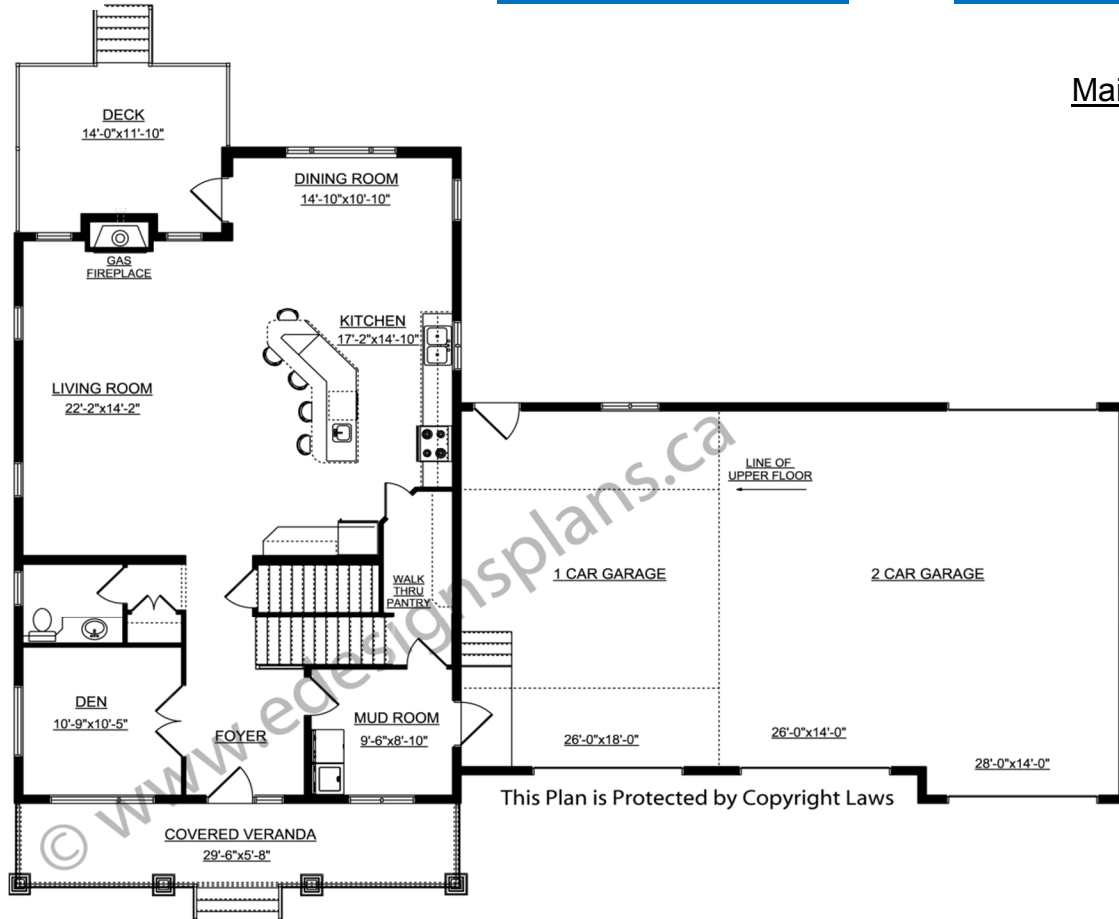
A western Canadian company from Alberta that designs and ships home plans all across Canada, the US, and Overseas.

For more information about this plan contact the designer at: info@edesignsplans.ca.

Plan 2012683

www.edesignsplans.ca

Call Us 1-855-675-1800



PROTECTED BY COPYRIGHT LAWS.
PROPERTY OF **E-DESIGNS PLANS INC.**