

# E-Designs Plans Inc.

A western Canadian company from Alberta that designs and ships home plans all across Canada, the US, and Overseas.

For more information about this plan contact the designer at: [info@edesignsplans.ca](mailto:info@edesignsplans.ca).

**Plan #: 2013689 Front Elevation**

[www.edesignsplans.ca](http://www.edesignsplans.ca)

**Call Us 1-855-675-1800**



**Rear Elevation**



## **2-Storey with 3-Car Garage**

860 Sq. Ft. Main Floor  
749 Sq. Ft. Second Floor  
1609 Sq. Ft. Total Living Area

Width: 45'-0"  
Depth: 59'-0" (plus deck)  
Bedrooms: 3  
Bathrooms: 2 & a Half Bath  
Main Floor Laundry: No  
Walk-in Pantry: Yes  
Flex Room: Yes

## **Plan #: 2013689**

Exterior Walls: 2x6 x 9 Ft. (Main Floor)  
2x6 x 8 Ft. (Second Floor)  
Foundation: 8' Concrete Wall  
(Other Foundations Available)  
Special Ceilings: None  
Fireplace: Yes  
Deck(s): Rear  
Veranda: Yes  
Attached Garage: Yes (3-Car - 9'x8' & 16'x8' Doors)  
Finished Basement Plan: No

**2-Storey with 3-Car Garage.** This plan has an angled front entry with a small half bath to the left and a flex room to the right. The L-shaped kitchen has a corner pantry. An island with eating bar outlines the kitchen area. Exit the door off the dinette area to access the back deck. The living room has a fireplace to enjoy by all three rooms. Up the stairs to the second floor master bedroom, complete with 3-piece ensuite and walk-in closet. Two more bedrooms on this level as well as the laundry room. If you need more room, the basement is undeveloped except for the mechanical room. This plan has great curb appeal with the craftsman style post and brick trim along the front. You will love this triple car garage with one 9'x8' door, one 16'x8' door, and room for a workbench area.

PROTECTED BY COPYRIGHT LAWS.  
PROPERTY OF **E-DESIGNS PLANS INC.**

# E-Designs Plans Inc.

A western Canadian company from Alberta that designs and ships home plans all across Canada, the US, and Overseas.

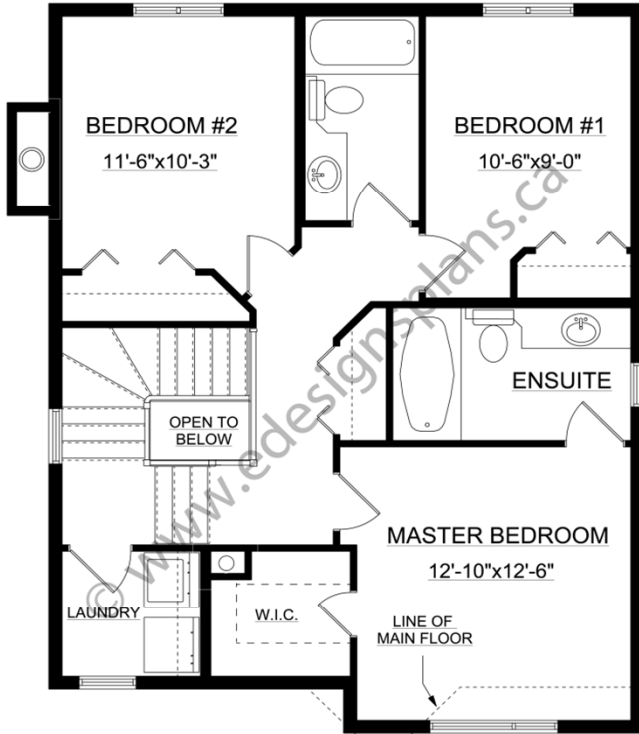
For more information about this plan contact the designer at: [info@edesignsplans.ca](mailto:info@edesignsplans.ca).

**Plan 2013689**

[www.edesignsplans.ca](http://www.edesignsplans.ca)

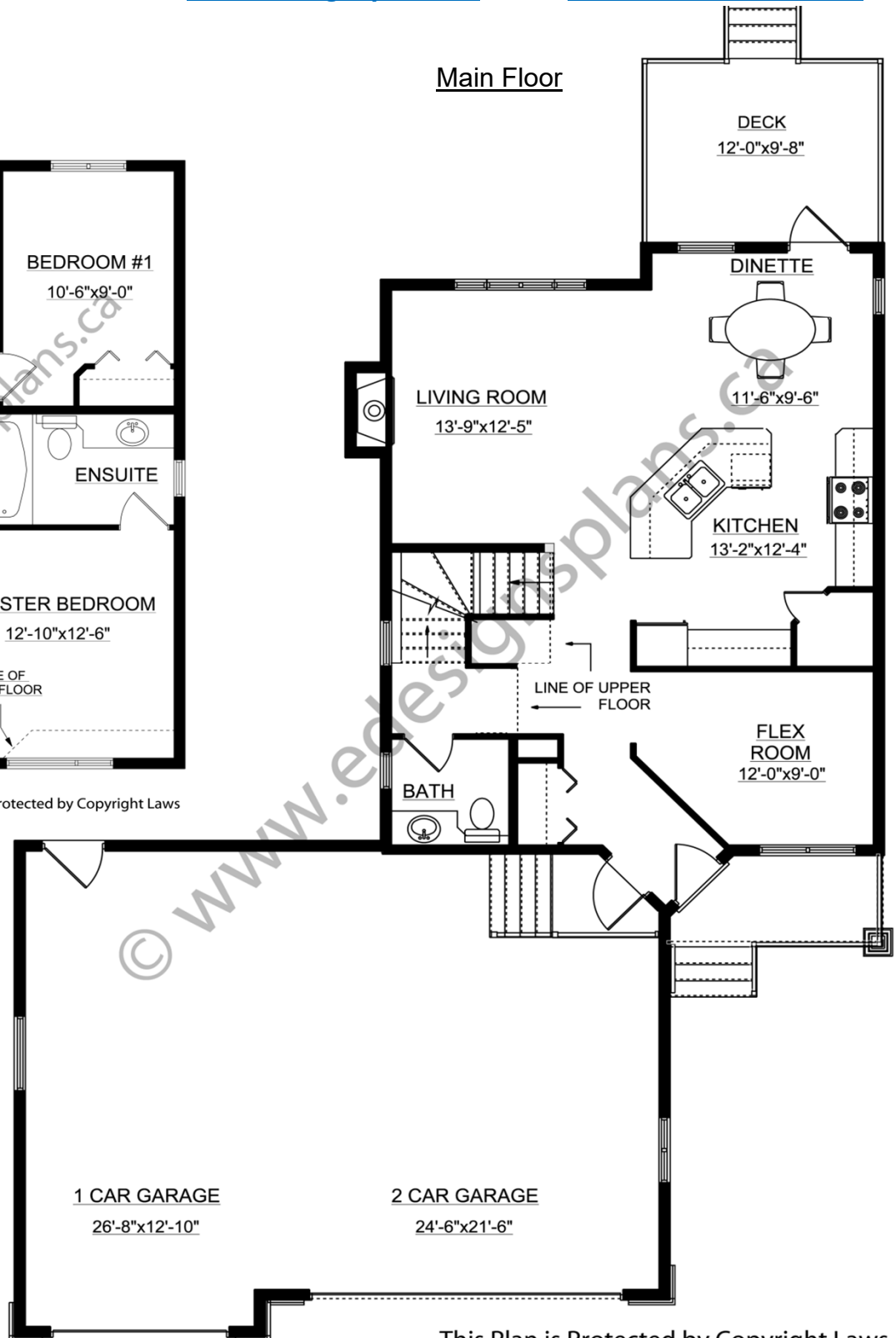
**Call Us 1-855-675-1800**

Second Floor



This Plan is Protected by Copyright Laws

Main Floor



This Plan is Protected by Copyright Laws

**PROTECTED BY COPYRIGHT LAWS.**  
**PROPERTY OF E-DESIGNS PLANS INC.**