

E-Designs Plans Inc.

A western Canadian company from Alberta that designs and ships home plans all across Canada, the US, and Overseas.

For more information about this plan contact the designer at: info@edesignsplans.ca.

Plan #: 2013706 Front Elevation

www.edesignsplans.ca

Call Us 1-855-675-1800



Rear Elevation



Left Elevation



2-Storey with 2-Car Garage & Bonus Room

1772 Sq. Ft. Main Floor

1344 Sq. Ft. Second Floor & Bonus Room

3116 Sq. Ft. Total Living Area

Width: 91'-4"
 Depth: 54'-0"
 Bedrooms: 4
 Bathrooms: 3 & a Half Bath
 Main Floor Laundry: Yes
 Walk-in Pantry: Yes
 Office/Den: Yes

Plan #: 2013706

Exterior Walls: 2x6 x 8 Ft. (Main Floor)
 2x6 x 8 Ft. (Second Floor)
 Foundation: Crawl Space 4' ICF (Insulated Concrete Form)
 (Other Foundations Available)
 Special Ceilings: Vaulted to Second Floor
 Fireplace: Yes
 Deck(s): Rear & Side (Covered)
 Veranda: Yes
 Attached Garage: Yes (2-Car with 10'x8' Doors)
 Finished Basement Plan: No

2-Storey with 2-Car Garage & Bonus Room. This is a very unique country floor plan, perfect for the farm or acreage. A huge covered veranda with plenty of decorative posts that wraps around the side and back gives it that country-style look. Another small covered deck at the back is accessible directly from the office, garage, or upstairs bonus room. The stairs to the second floor are right off the main entrance. The large great room has a gas fireplace for your enjoyment. The kitchen has a corner pantry and a huge island with lunch counter. Both the kitchen and dining room are vaulted and open to the second floor. The dining room has double french doors going into the office, which is also vaulted. The master bedroom is right around the corner from the stairs and has a walk-in closet and a 5-piece ensuite. An additional 3-piece bathroom is also located in this same area. Main floor laundry is right inside the garage entrance as well as a half bath and large walk-in closet, for added convenience. Up the stairs to the second floor you will find yourself in an area overlooking the kitchen and dining room. There are two more bedrooms with dormers on this level, along with a 3-piece bathroom. One of these bedrooms has a walk-in closet. Lots of attic storage as well. A huge game/media room, as well a fourth bedroom, are located in the bonus room over the garage. The bonus room area is accessible from the garage, the deck, or the main house. The 2-car oversize garage has 10'x8' overhead doors and lots of additional room for a work area.

E-Designs Plans Inc.

A western Canadian company from Alberta that designs and ships home plans all across Canada, the US, and Overseas.

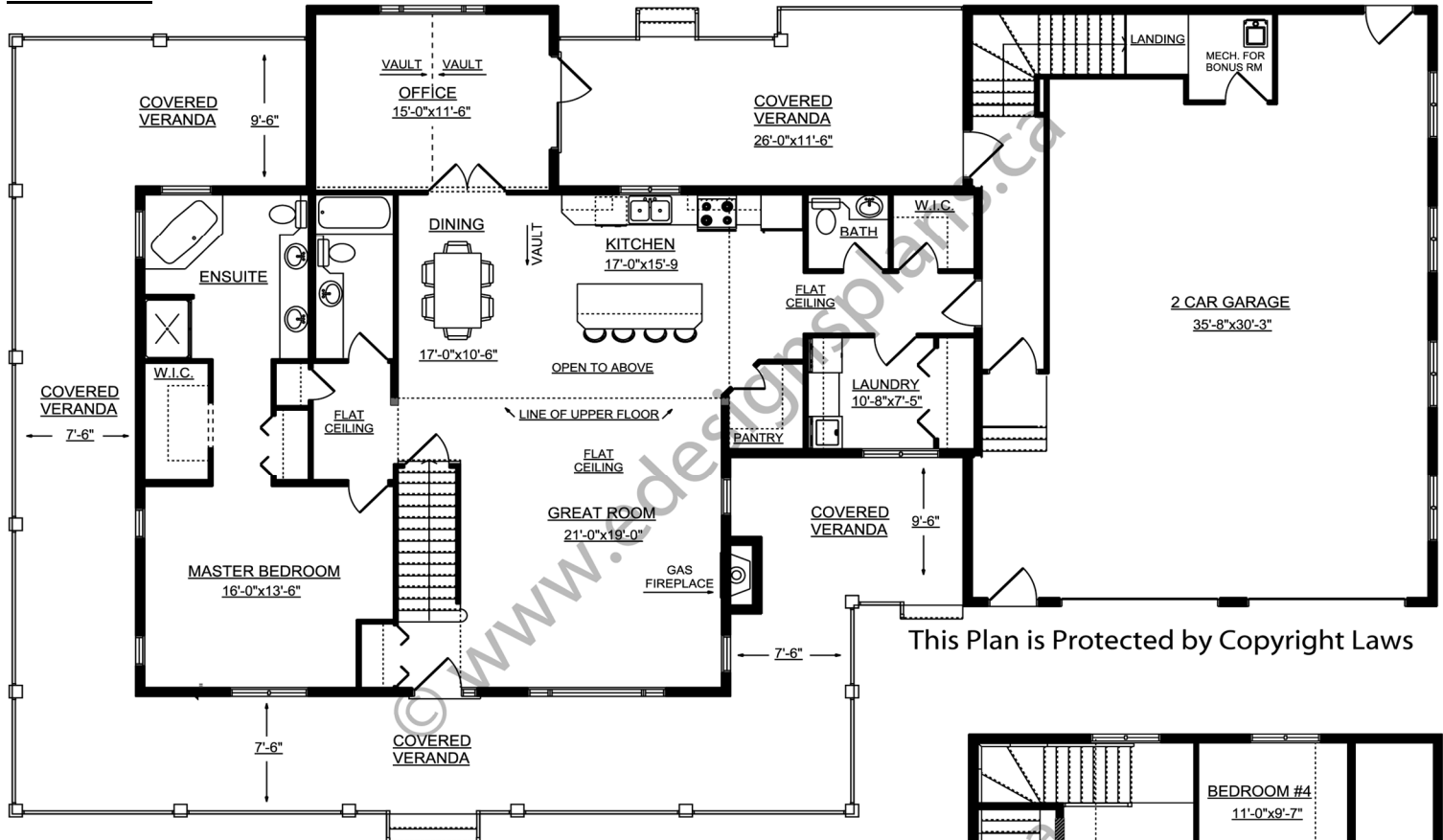
For more information about this plan contact the designer at: info@edesignsplans.ca.

Plan 2013706

www.edesignsplans.ca

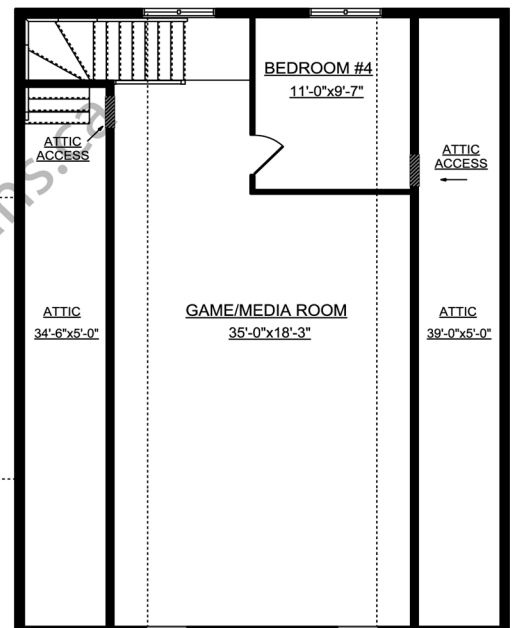
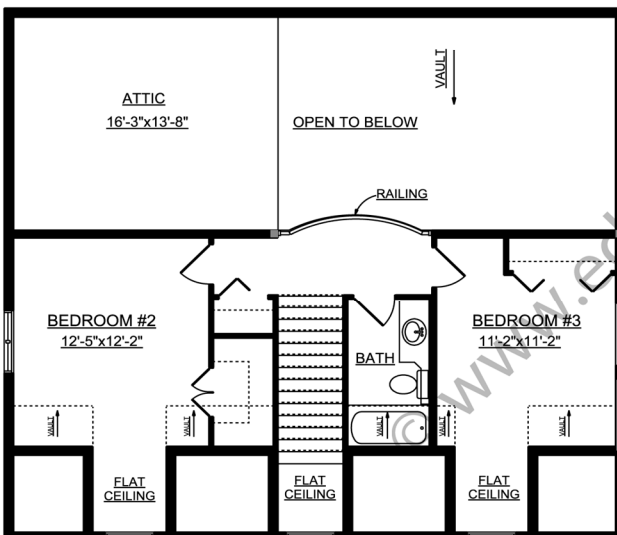
Call Us 1-855-675-1800

Main Floor



This Plan is Protected by Copyright Laws

Second Floor



This Plan is Protected by Copyright Laws

PROTECTED BY COPYRIGHT LAWS.
PROPERTY OF **E-DESIGNS PLANS INC.**