

E-Designs Plans Inc.

A western Canadian company from Alberta that designs and ships home plans all across Canada, the US, and Overseas.

For more information about this plan contact the designer at: info@edesignsplans.ca.

Plan #: 2013710 Front Elevation

www.edesignsplans.ca

Call Us 1-855-675-1800



2 Storey with 2-Car Garage

1508 Sq. Ft. Main Floor

535 Sq. Ft. Second Floor

2043 Sq. Ft. Total Living Area

Width: 59'-0" (plus deck)

Depth: 52'-0"

Bedrooms: 2

Bathrooms: 2

Main Floor Laundry: Yes

Walk-in Pantry: Yes

Office/Den: No

Plan #: 2013710

Exterior Walls:

2x6 x 8 Ft. (Main Floor)

2x6 x 8 Ft. (Second Floor)

Foundation:

9' ICF (Insulated Concrete Form)
(Other Foundations Available)

Special Ceilings:

Vaulted Great Room

Fireplace:

Yes

Deck(s):

Yes

Veranda:

No

Attached Garage:

Yes (2-Car with 10'x8' Doors)

Finished Basement Plan:

No

2 Storey with 2-Car Garage. This plan is great for the farm, acreage, or as a cabin at the lake. A great big covered deck with craftsman style posts on the front gives it that cabin or ranch-style look. From the front deck, you enter into the dining room and kitchen area. The U-shaped kitchen has a corner pantry and island with breakfast bar. The dining room and great room area is vaulted to the second floor and open to above with windows to the roof for lots of natural lighting. A 2-sided wood burning fireplace is shared with the master bedroom, which has its own walk-in closet and 3-piece ensuite. A second or spare bedroom is also located on this floor as well as a 3-piece bathroom. Main floor laundry is an added benefit. From the garage at the back, there is a mudroom and walk-in closet upon entering. Up the stairs takes you to an area which is open to below. A 535 square foot bonus room is shown on this level, with lots of attic storage. An attached garage at the back.

**PROTECTED BY COPYRIGHT LAWS.
PROPERTY OF *E-DESIGNS PLANS INC.***

E-Designs Plans Inc.

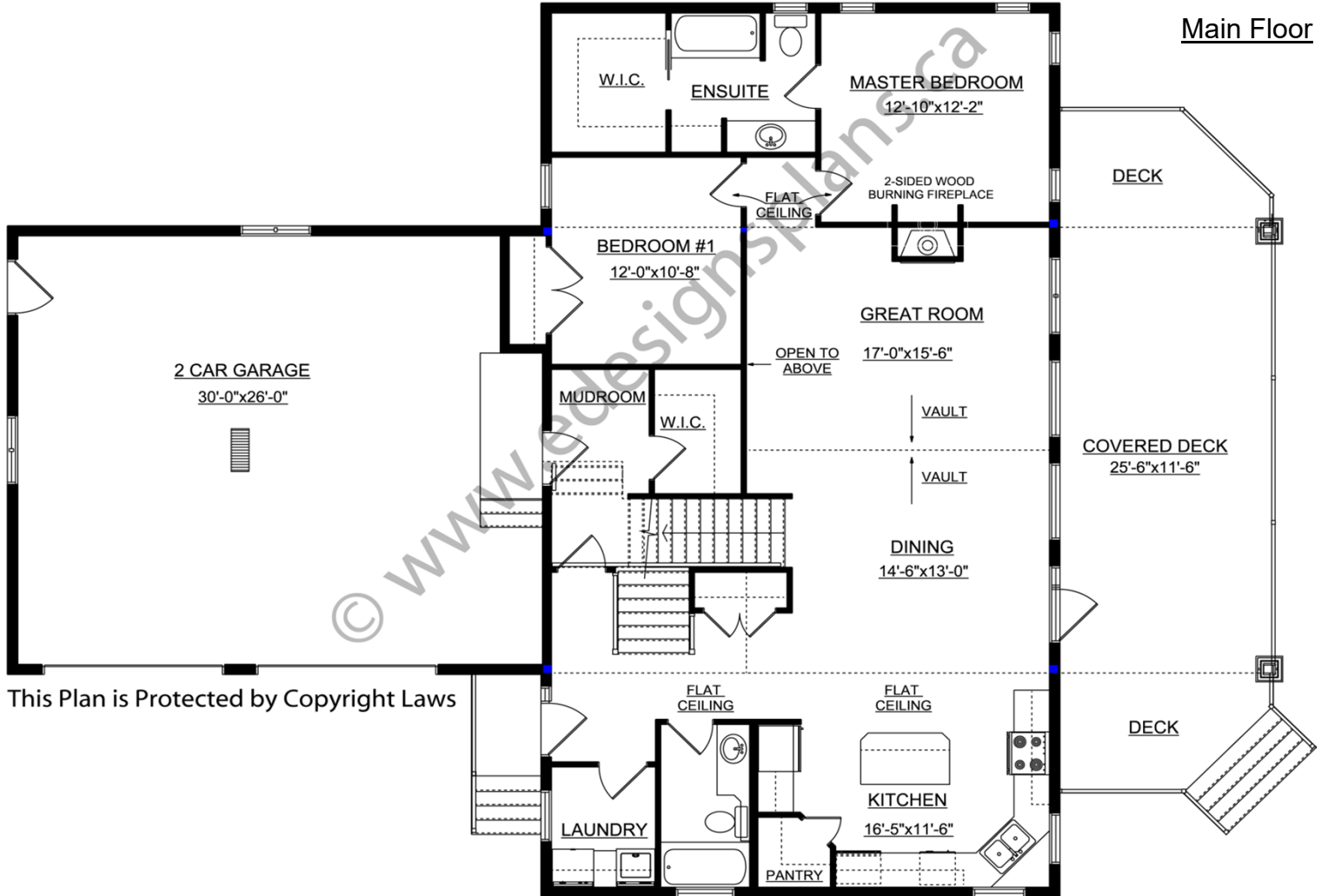
A western Canadian company from Alberta that designs and ships home plans all across Canada, the US, and Overseas.

For more information about this plan contact the designer at: info@edesignsplans.ca.

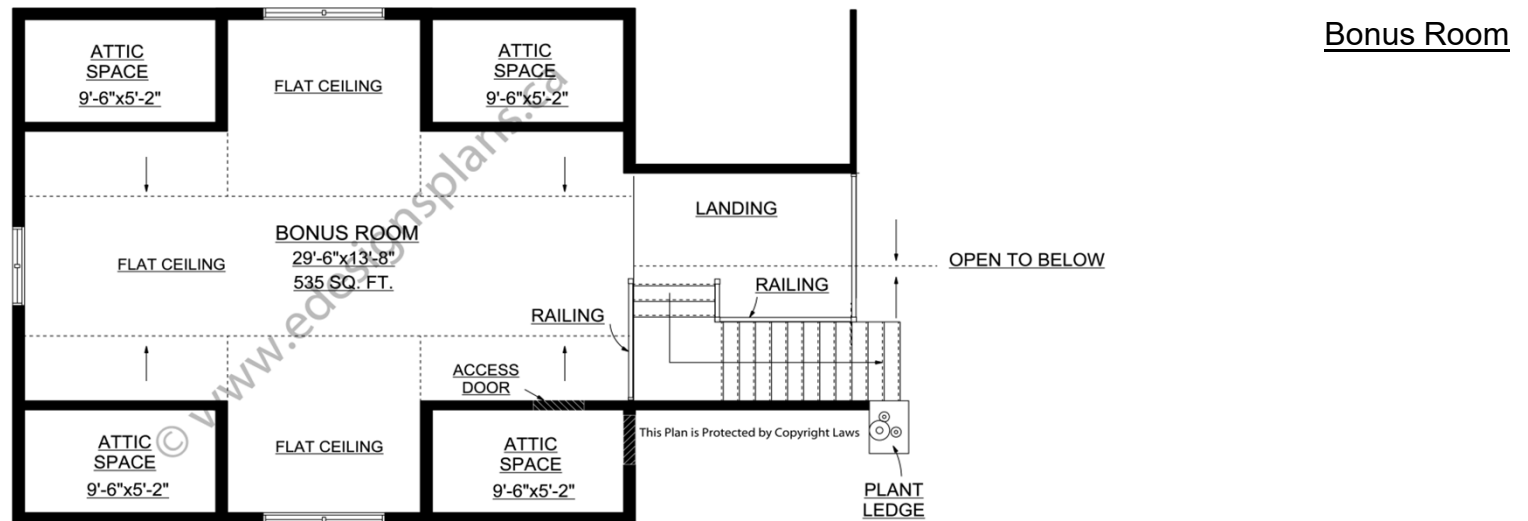
Plan 2013710

www.edesignsplans.ca

Call Us 1-855-675-1800



This Plan is Protected by Copyright Laws



This Plan is Protected by Copyright Laws

PROTECTED BY COPYRIGHT LAWS.
PROPERTY OF **E-DESIGNS PLANS INC.**