

E-Designs Plans Inc.

A western Canadian company from Alberta that designs and ships home plans all across Canada, the US, and Overseas.

For more information about this plan contact the designer at: info@edesignsplans.ca.

Plan #: 2013711 Front Elevation

www.edesignsplans.ca

[Call Us 1-855-675-1800](tel:1-855-675-1800)



Rear Elevation

2-Storey Cabin with 2-Car Garage

768 Sq. Ft. Main Floor

Width:	24'-0" (plus deck)
Depth:	32'-0" (plus deck)
Bedrooms:	2
Bathrooms:	1
Main Floor Laundry:	No
Walk-in Pantry:	No
Office/Den:	No

Plan #: 2013711

Exterior Walls:	2x6 x 8 Ft. (Main Floor) 2x6 x 9 Ft. (Lower Level/Garage)
Foundation:	Slab on 4' Concrete - Crawl Space
Special Ceilings:	Vaulted Kitchen/Nook/Living Rm
Fireplace:	Yes
Deck(s):	Front (Covered)
Veranda:	No
Attached Garage:	Yes (2-Car with 10'x8' Doors)
Finished Basement Plan:	Yes (Lower Level/Garage)

2-Storey Cabin with 2-Car Garage. Perfect for that lake lot, this cabin has a main living area over a 2-car garage. The garage level (lower floor) houses the mechanical room, the laundry room, and a half bath. With two 10'x8' overhead doors, it will be great for storing your vehicles, your boat, your ATV, or other water toys. Up the stairs from the garage or up the stairs from the outside brings you to the living room, nook and kitchen area, which has a vaulted ceiling. A nice fireplace is shared between all three rooms. Two bedrooms with a 3-piece bathroom are towards the back of this cabin. Enjoy this unique design.

PROTECTED BY COPYRIGHT LAWS.
PROPERTY OF **E-DESIGNS PLANS INC.**

E-Designs Plans Inc.

A western Canadian company from Alberta that designs and ships home plans all across Canada, the US, and Overseas.

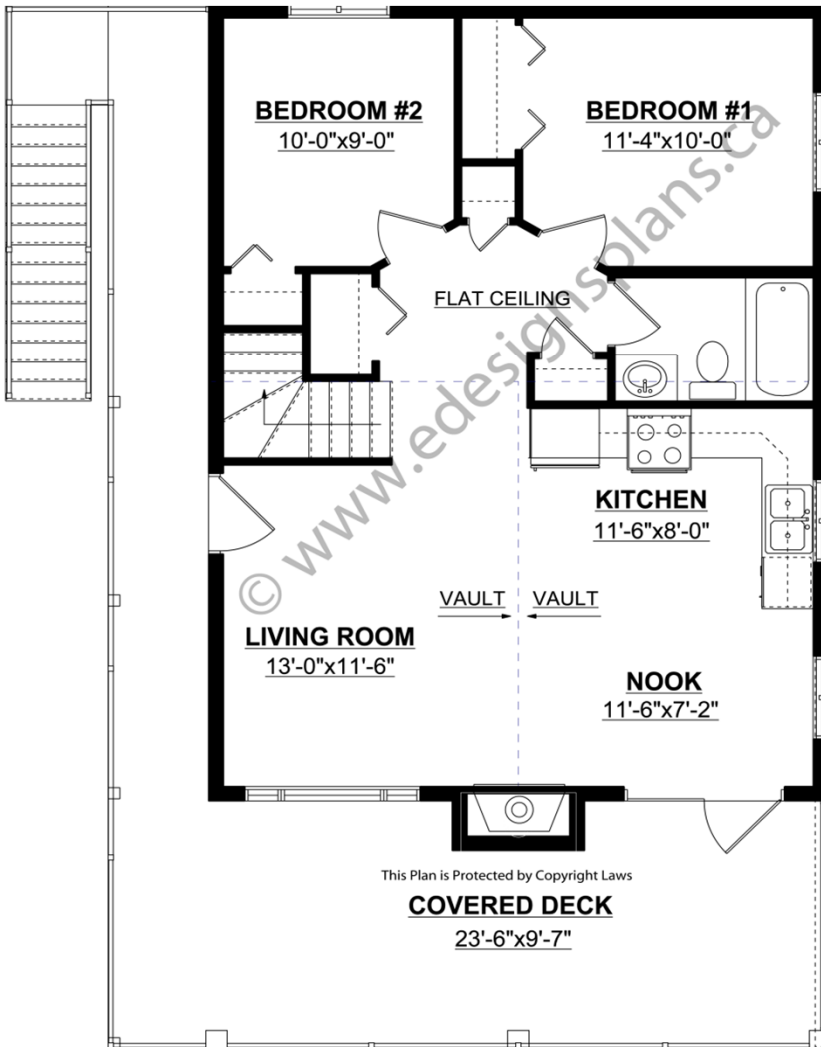
For more information about this plan contact the designer at: info@edesignsplans.ca.

Plan 2013711

www.edesignsplans.ca

Call Us 1-855-675-1800

Main Floor



Lower Floor

