

E-Designs Plans Inc.

A western Canadian company from Alberta that designs and ships home plans all across Canada, the US, and Overseas.

For more information about this plan contact the designer at: info@edesignsplans.ca.

Plan #: 2013736 Front Elevation

www.edesignsplans.ca

Call Us 1-855-675-1800



Right Elevation

2-Storey Cabin Plan

1040 Sq. Ft. Main Floor

546 Sq. Ft. Second Floor

1586 Sq. Ft. Total Living Area

Width: 26'-0" (plus deck)

Depth: 40'-0" (plus deck)

Bedrooms: 4

Bathrooms: 2

Main Floor Laundry: Yes

Walk-in Pantry: No

Office/Den: No

Plan #: 2013736

Exterior Walls:

2x6 x 9 Ft. (Main Floor)

2x6 x 14'-6" Ft. (Second Floor)

Foundation:

9' ICF (Insulated Concrete Form)

(Other Foundations Available)

Special Ceilings:

Vaulted KItchen/Dinette/Great Rm

Fireplace:

Yes

Deck(s):

Front (Covered) & Side

Veranda:

No

Attached Garage:

No

Finished Basement Plan:

Yes

2-Storey Cabin Plan. From the front covered deck, you enter into the living room through double doors. This area is open to above, and has a vaulted ceiling to the second floor. A fireplace in the great room is useful for those cooler nights. The dining room is open to the "L" shaped kitchen. An island with lunch counter is also available for additional seating. Enter from the side into the main entrance with coat closet and bench seating. This area is open and has the laundry room and room for storage in the back. There is one bedroom on this level as well as a 4-piece bathroom. Up the staircase leads to the second floor which is open to below. Another bedroom is located on the second floor, and attic storage is accessible here as well. Downstairs, the lower level has a large rec room, mechanical room, and 3-piece bathroom. There are two more bedrooms on this level, one with its own walk-in closet. A great plan for that cabin at the lake or for an acreage or farmhouse.

PROTECTED BY COPYRIGHT LAWS.
PROPERTY OF **E-DESIGNS PLANS INC.**

E-Designs Plans Inc.

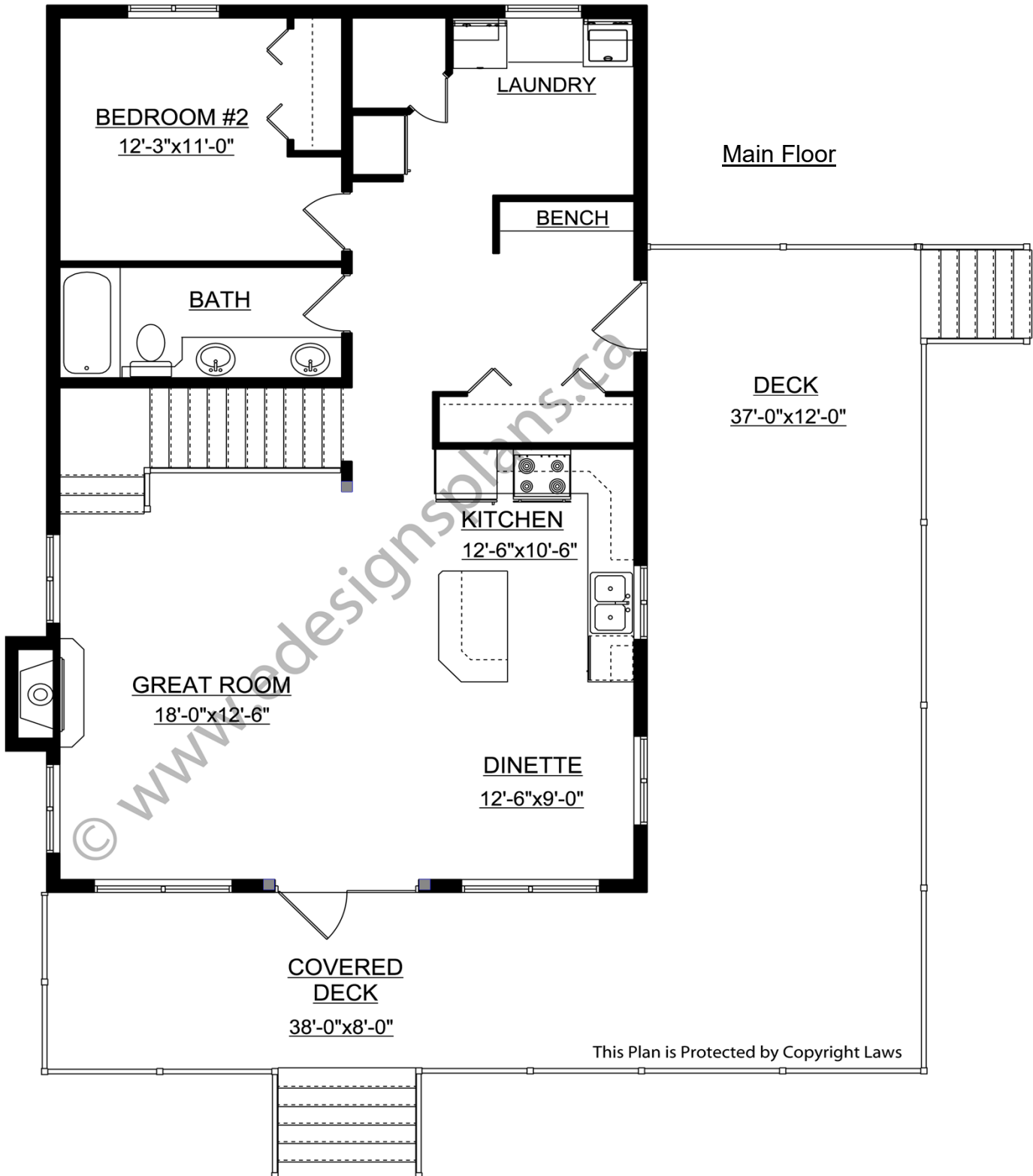
A western Canadian company from Alberta that designs and ships home plans all across Canada, the US, and Overseas.

For more information about this plan contact the designer at: info@edesignsplans.ca.

Plan 2013736

www.edesignsplans.ca

[Call Us 1-855-675-1800](tel:1-855-675-1800)



PROTECTED BY COPYRIGHT LAWS.
PROPERTY OF **E-DESIGNS PLANS INC.**

E-Designs Plans Inc.

A western Canadian company from Alberta that designs and ships home plans all across Canada, the US, and Overseas.

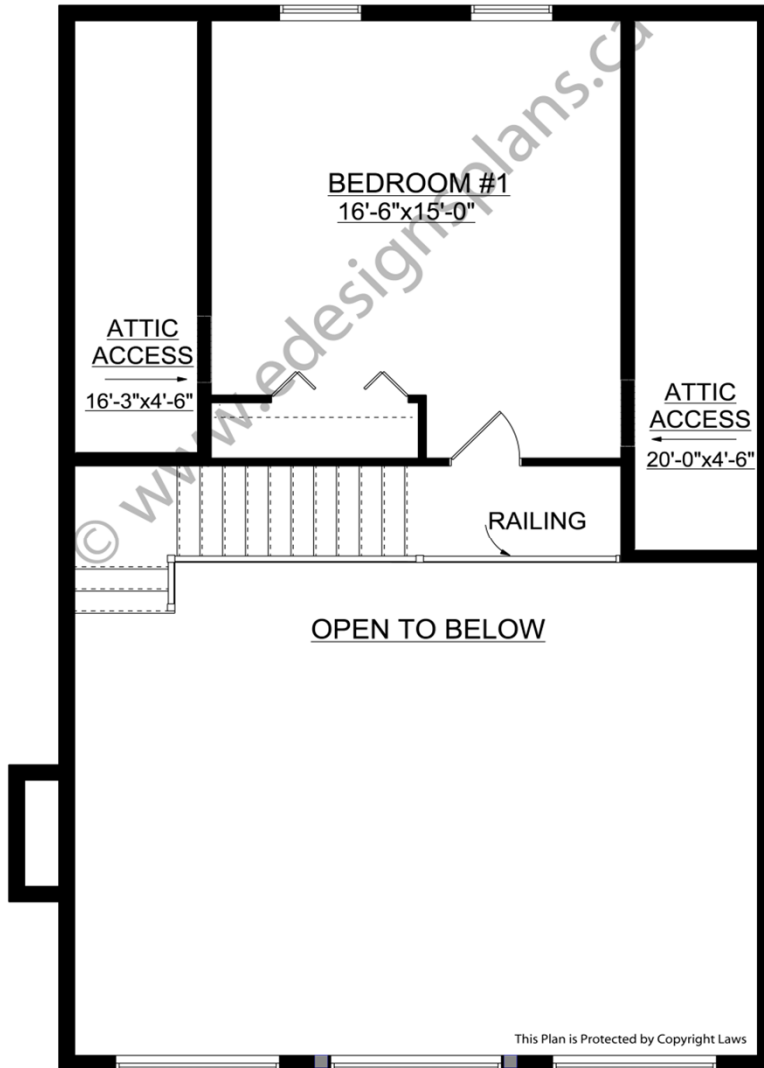
For more information about this plan contact the designer at: info@edesignsplans.ca.

Plan 2013736

www.edesignsplans.ca

[Call Us 1-855-675-1800](tel:1-855-675-1800)

Second Floor



Finished Basement

