

E-Designs Plans Inc.

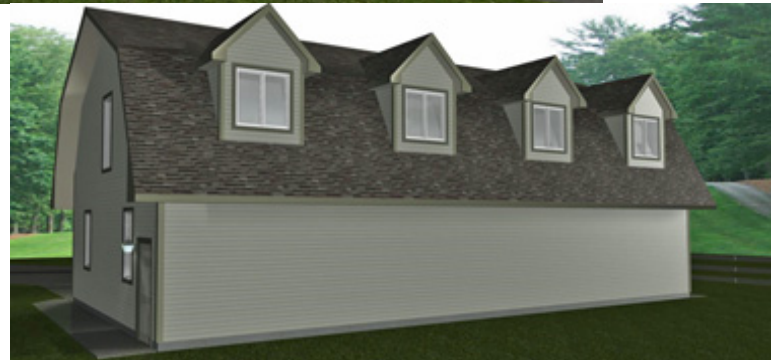
A western Canadian company from Alberta that designs and ships home plans all across Canada, the US, and Overseas.

For more information about this plan contact the designer at: info@edesignsplans.ca.

Plan #: 2013740 Front Elevation

www.edesignsplans.ca

Call Us 1-855-675-1800



Rear Elevation

Garage with Living Quarters or Cabin Plan

900 Sq. Ft. Second Floor Living Quarters

Plan #: 2013740

Width: 56'-0"
 Depth: 30'-0"
 Bedrooms: 1
 Bathrooms: 1
 Main Floor Laundry: No
 Walk-in Pantry: No
 Finished Basement Plan: No

Exterior Walls: 2x6 x 10 Ft. (Garage)
 2x6 x 8 Ft. (Second Floor)
 Foundation: 4' ICF (Insulated Concrete Form)
 (Other Foundations Available)
 Fireplace: No
 Deck(s): No
 Veranda: No
 Garage: Yes (3-Car with 10'x8' Doors)

Garage with Living Quarters or Cabin Plan. This unique plan is a 3-car garage or shop with 10' ceilings and three bays, all with 10'x8' overhead doors. It has a barn-style look. Enter from the front into an open area. The utility room is on the main level. Upstairs are the living quarters. There is a 900 Sq. Ft. open area, one bedroom, and a 3-piece bathroom. There would be lots of room at the lake to store your boat or other water toys. Great for a detached garage or a cabin at the lake.

E-Designs Plans Inc.

A western Canadian company from Alberta that designs and ships home plans all across Canada, the US, and Overseas.

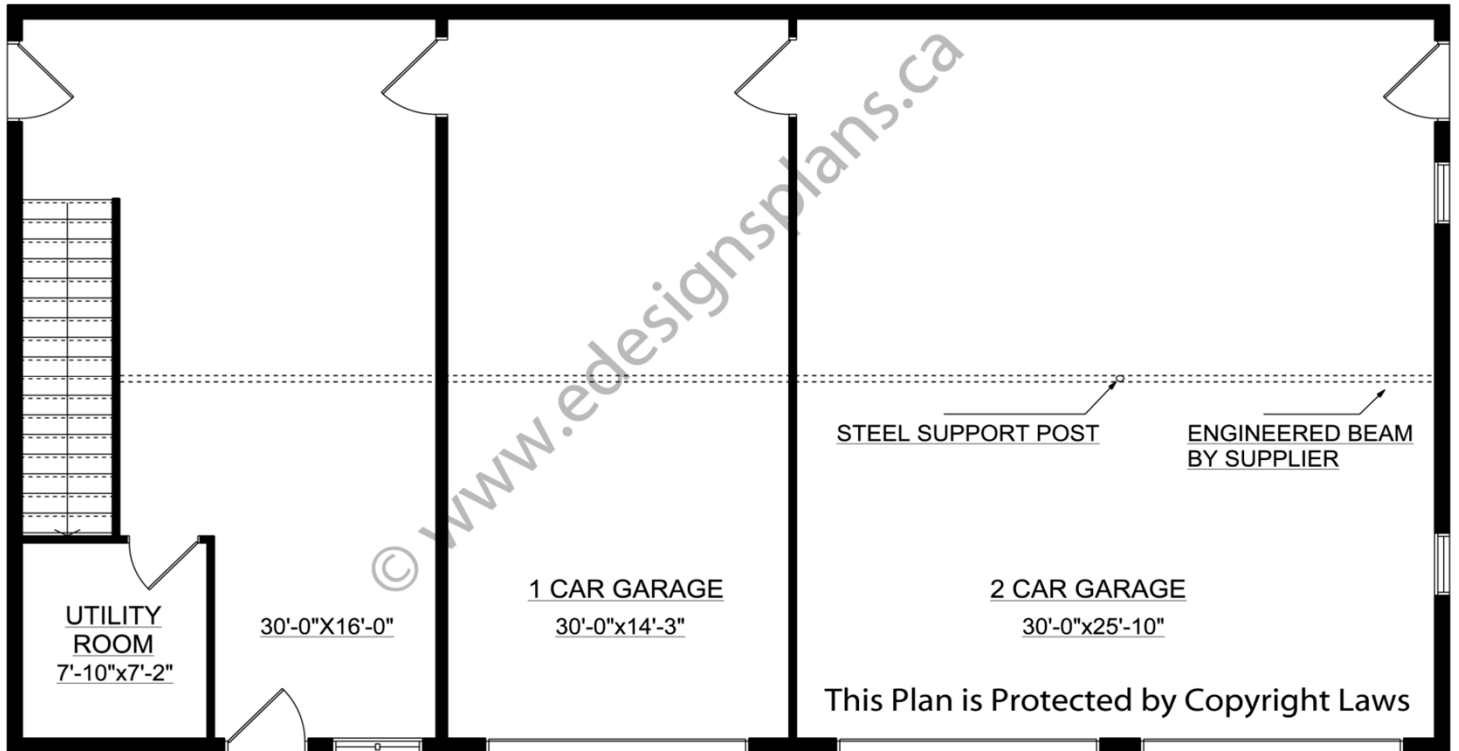
For more information about this plan contact the designer at: info@edesignsplans.ca.

Plan 2013740

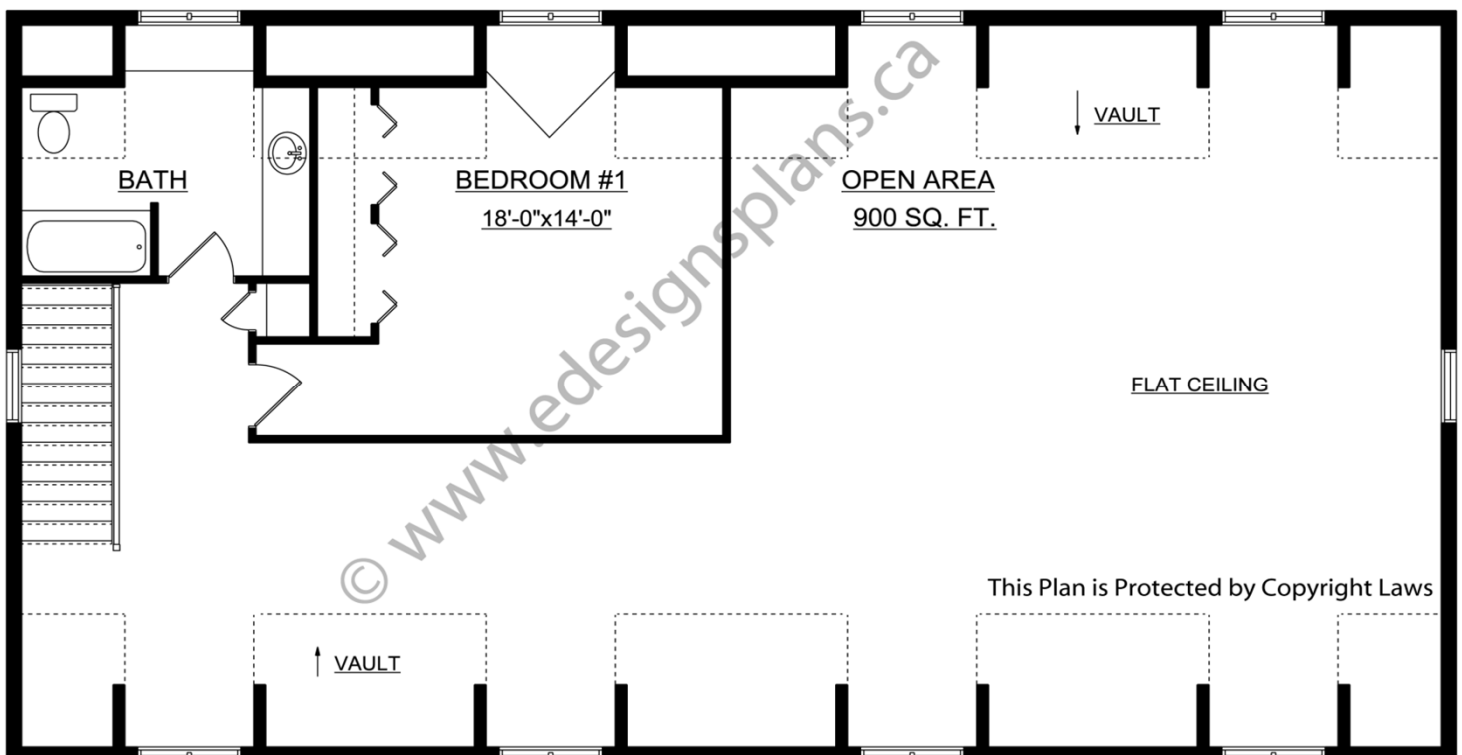
www.edesignsplans.ca

Call Us 1-855-675-1800

Main Floor



Second Floor



PROTECTED BY COPYRIGHT LAWS.
PROPERTY OF **E-DESIGNS PLANS INC.**