

E-Designs *Plans Inc.*

A western Canadian company from Alberta that designs and ships home plans all across Canada, the US, and Overseas.

For more information about this plan contact the designer at: info@edesignsplans.ca.

Plan #: 2015888 Front Elevation

www.edesignsplans.ca

Call Us 1-855-675-1800



Rear Elevation



2-Storey Plan

1400 Sq. Ft. Main Floor

1416 Sq. Ft. Second Floor

2816 Sq. Ft. Total Living Area

Width: 54'-0"

Depth: 40'-0"

Bedrooms: 4

Bathrooms: 2 & a Half

Main Floor Laundry: Yes

Pantry: Yes

Office/Den: Yes

Plan #: 2015888

Exterior Walls:

Foundation:

Special Ceilings:

Fireplace:

Deck(s):

Veranda:

Attached Garage:

Finished Basement Plan:

2x6 x 8 Ft. (Main Floor)

2x6 x 8 Ft. (Second Floor)

8'-4.5" ICF (Insulated Concrete Form)
(Other Foundations Available)

None

Yes

Side (Covered)

Yes

No

No

Perfect 2-Storey Plan for an acreage, farmhouse or larger town lot. This 2-Storey has a large entry and mudroom with laundry conveniently located right beside the rear door. A large covered veranda with craftsman style posts wraps around the side as well. There is access from the dining room to the veranda through garden doors. Lots of storage on the main floor. The kitchen and dining room are open to each other. The living room has a corner fireplace to enjoy. Upstairs there is a master bedroom with its own walk-in closet and 3 -piece ensuite, plus three more bedrooms which share a 4-piece bath. The plan is designed with an office as well but this could be converted to another bedroom if necessary. A large open sitting area is located at the top of the stairs.

PROTECTED BY COPYRIGHT LAWS.
PROPERTY OF ***E-DESIGNS PLANS INC.***

E-Designs Plans Inc.

A western Canadian company from Alberta that designs and ships home plans all across Canada, the US, and Overseas.

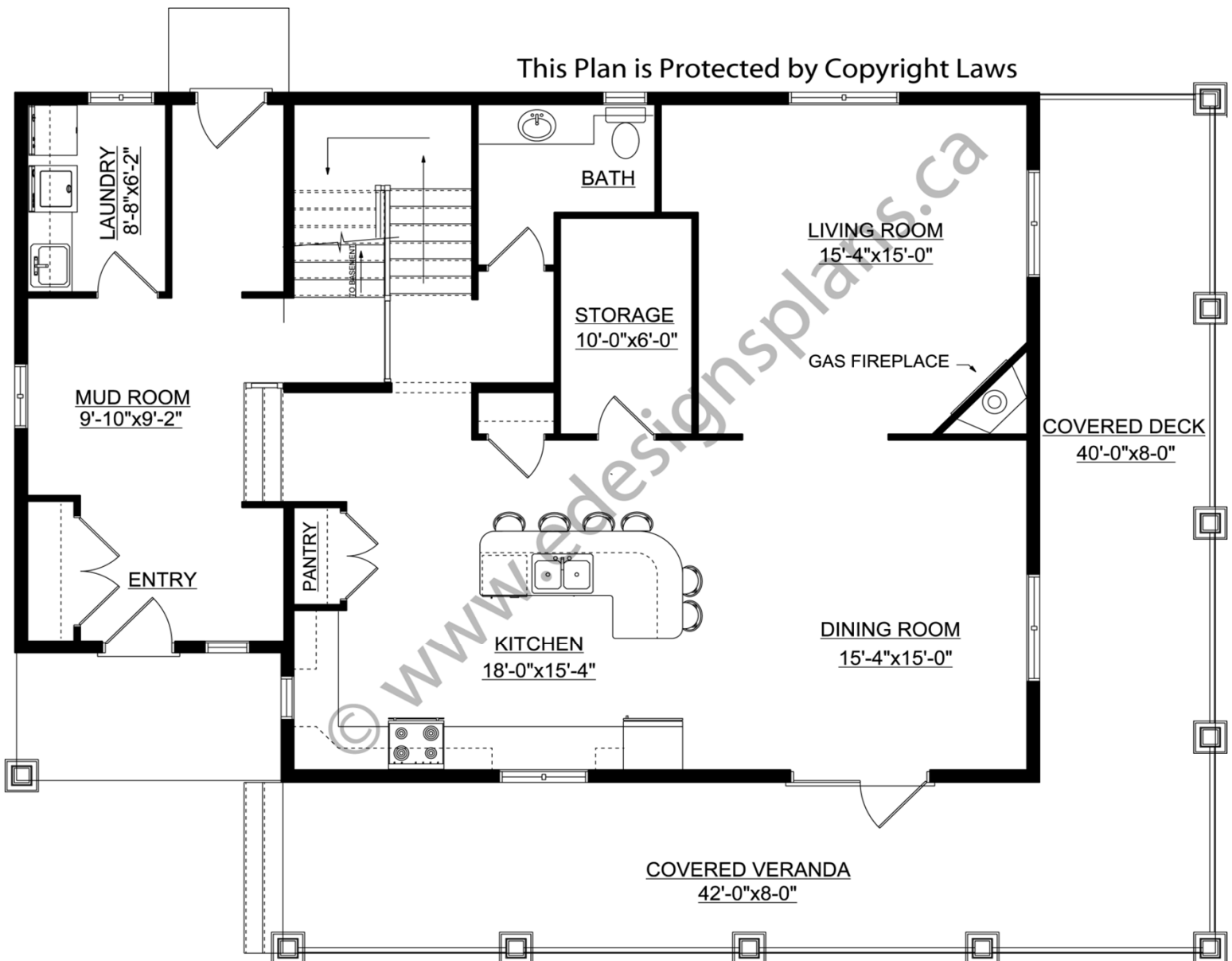
For more information about this plan contact the designer at: info@edesignsplans.ca.

Plan 2015888

www.edesignsplans.ca

Call Us 1-855-675-1800

Main Floor



PROTECTED BY COPYRIGHT LAWS.
PROPERTY OF **E-DESIGNS PLANS INC.**

E-Designs Plans Inc.

A western Canadian company from Alberta that designs and ships home plans all across Canada, the US, and Overseas.

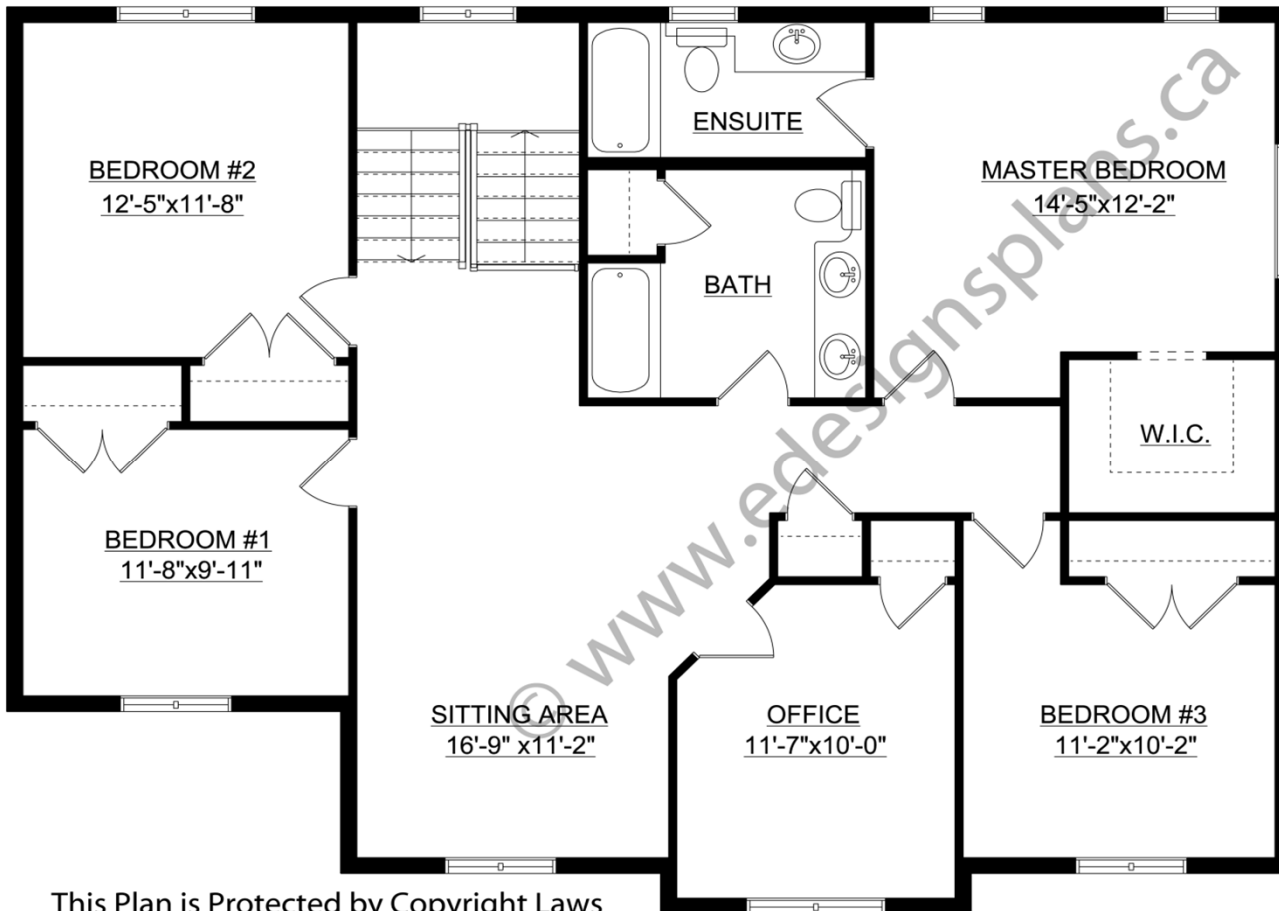
For more information about this plan contact the designer at: info@edesignsplans.ca.

Plan 2015888

www.edesignsplans.ca

[Call Us 1-855-675-1800](tel:1-855-675-1800)

Second Floor



This Plan is Protected by Copyright Laws

PROTECTED BY COPYRIGHT LAWS.
PROPERTY OF **E-DESIGNS PLANS INC.**