

E-Designs Plans Inc.

A western Canadian company from Alberta that designs and ships home plans all across Canada, the US, and Overseas.

For more information about this plan contact the designer at: info@edesignsplans.ca.

Plan #: 2015901 Front Elevation

www.edesignsplans.ca

[Call Us 1-855-675-1800](tel:1-855-675-1800)



Rear Elevation

2-Storey with Garage on Each End

1620 Sq. Ft. Main Floor

1353 Sq. Ft. Second Floor

2973 Sq. Ft. Total Living Area

Width: 73'-6"

Depth: 50'-6"

Bedrooms: 4

Bathrooms: 3 & a Half Bath

Main Floor Laundry: Yes

Walk-in Pantry: Yes

Office/Den: Yes

Plan #: 2015901

Exterior Walls:

2x6 x 9 Ft. (Main Floor)

2x6 x 8 Ft. (Second Floor)

Foundation:

8' Concrete Wall

(Other Foundations Available)

Special Ceilings:

Vaulted Bonus Room

Fireplace:

Yes

Deck(s):

Rear

Veranda:

Yes (Covered)

Attached Garage:

Yes (2-Car with 10'x8' Doors, plus Lower 1-Car with 10'x7' Door)

2-Storey Plan with Garage on Each End. Great for a multi-grade lot. This plan has a 2-car attached garage plus a lower 1-car garage on the opposite end with access to the basement. This would work well for a possible future mother-in-law suite. The master suite is on the main floor and above the lower garage. It has a 4-piece ensuite and a large walk-in closet. The laundry and mudroom is right next to the master suite and just off the front foyer. A den with double french doors is just left of the front foyer, and a half bath is located just behind the den near the coat closet. Through the archway takes you to the open kitchen and living room. A gas fireplace is on the garage wall of the living room. The dining room is separate and has lots of large windows plus a garden door leading to the rear deck. Upstairs, there is another full master suite with a 4-piece ensuite and walk-in closet, plus 2 more bedrooms each with their own walk-in closets. A huge bonus room extends over the master suite on the main level. The basement is undeveloped so you can design it as you wish. The multi-roof line and stone pillars bordering the front covered veranda give this house a unique look.

E-Designs Plans Inc.

A western Canadian company from Alberta that designs and ships home plans all across Canada, the US, and Overseas.

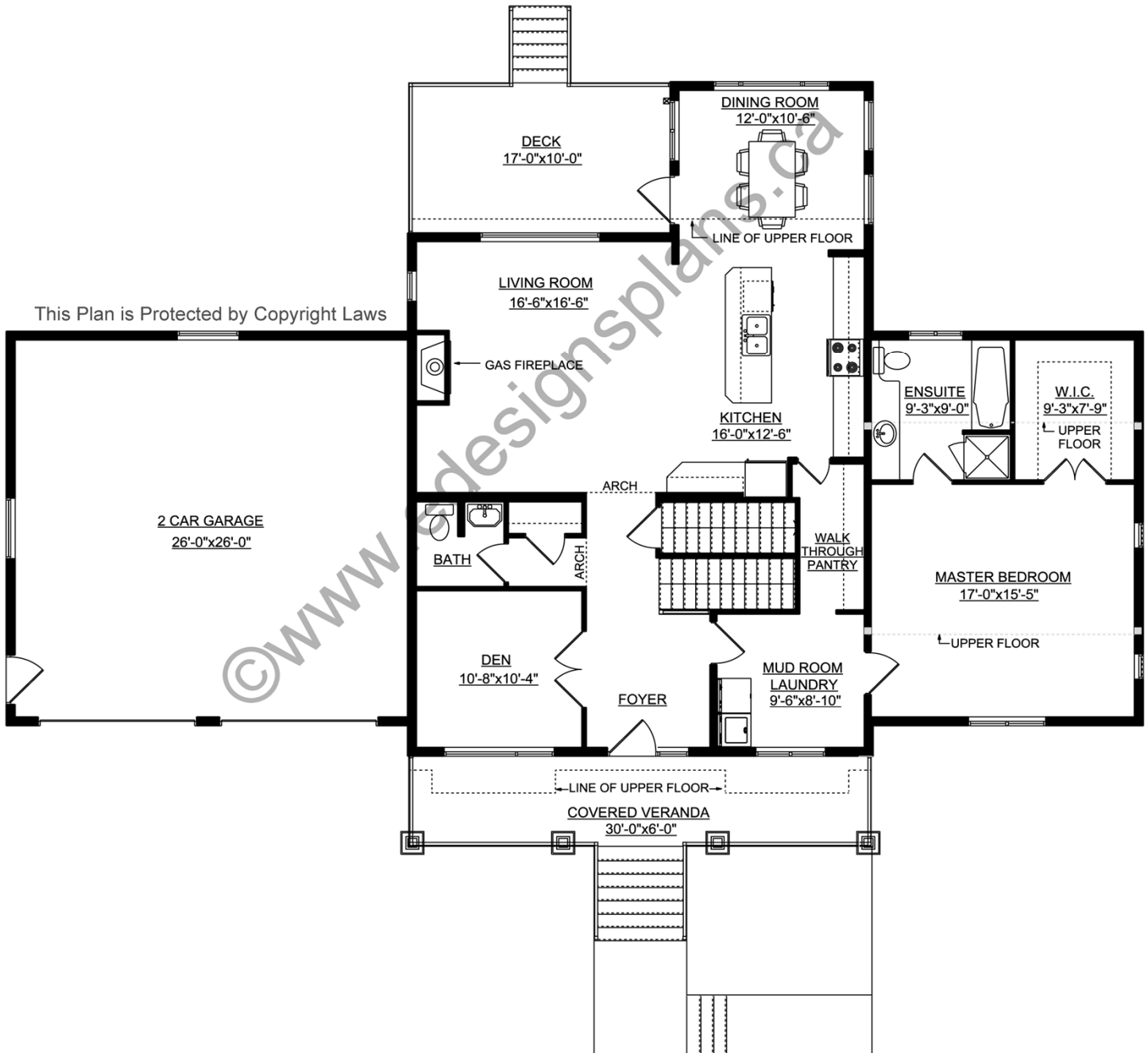
For more information about this plan contact the designer at: info@edesignsplans.ca.

Plan 2015901

www.edesignsplans.ca

[Call Us 1-855-675-1800](tel:1-855-675-1800)

Main Floor



PROTECTED BY COPYRIGHT LAWS.
PROPERTY OF **E-DESIGNS PLANS INC.**

E-Designs Plans Inc.

A western Canadian company from Alberta that designs and ships home plans all across Canada, the US, and Overseas.

For more information about this plan contact the designer at: info@edesignsplans.ca.

Plan 2015901

www.edesignsplans.ca

[Call Us 1-855-675-1800](tel:1-855-675-1800)

Second Floor

