

E-Designs Plans Inc.

A western Canadian company from Alberta that designs and ships home plans all across Canada, the US, and Overseas.

For more information about this plan contact the designer at: info@edesignsplans.ca.

Plan #: 2015906 Front Elevation

www.edesignsplans.ca

Call Us 1-855-675-1800



Rear Elevation



2-Storey Carriage House - 2-Car Garage

1280 Sq. Ft. Second Floor

Width: 32'-0" plus stairs
 Depth: 40'-0" plus deck
 Bedrooms: 1
 Bathrooms: 2 & a Half Bath
 Main Floor Laundry: Yes
 Walk-in Pantry: Yes
 Office/Den: Yes

Plan #: 2015906

Exterior Walls: 2x6 x 10 Ft. (Main Floor)
 2x6 x 8 Ft. (Second Floor)
 Foundation: 4' ICF (Insulated Concrete Form)
 (Other Foundations Available)
 Special Ceilings: Multi-Height Second Floor
 Fireplace: No
 Deck(s): Rear
 Veranda: No
 Attached Garage: Yes (2-Car with 10'x8' Doors)

2-Storey Carriage House - 2 Car Garage. This Plan is a 2-Car Garage with living quarters above. A great carriage house design with the utility room, laundry room, and a 3-piece bathroom on the main floor, or garage level. Upstairs, the dormers provide lots of natural lighting plus some additional square footage to enjoy. The corner kitchen has a full pantry and a working island with lunch counter and the dining area is set into the middle dormer. The living room is open to the kitchen. A bedroom with its own walk-in closet and 3-piece ensuite is on this second floor, plus an office and 2-piece bath. A rear door leads to a fair size deck which also has stairs leading down from the outside.

E-Designs Plans Inc.

A western Canadian company from Alberta that designs and ships home plans all across Canada, the US, and Overseas.

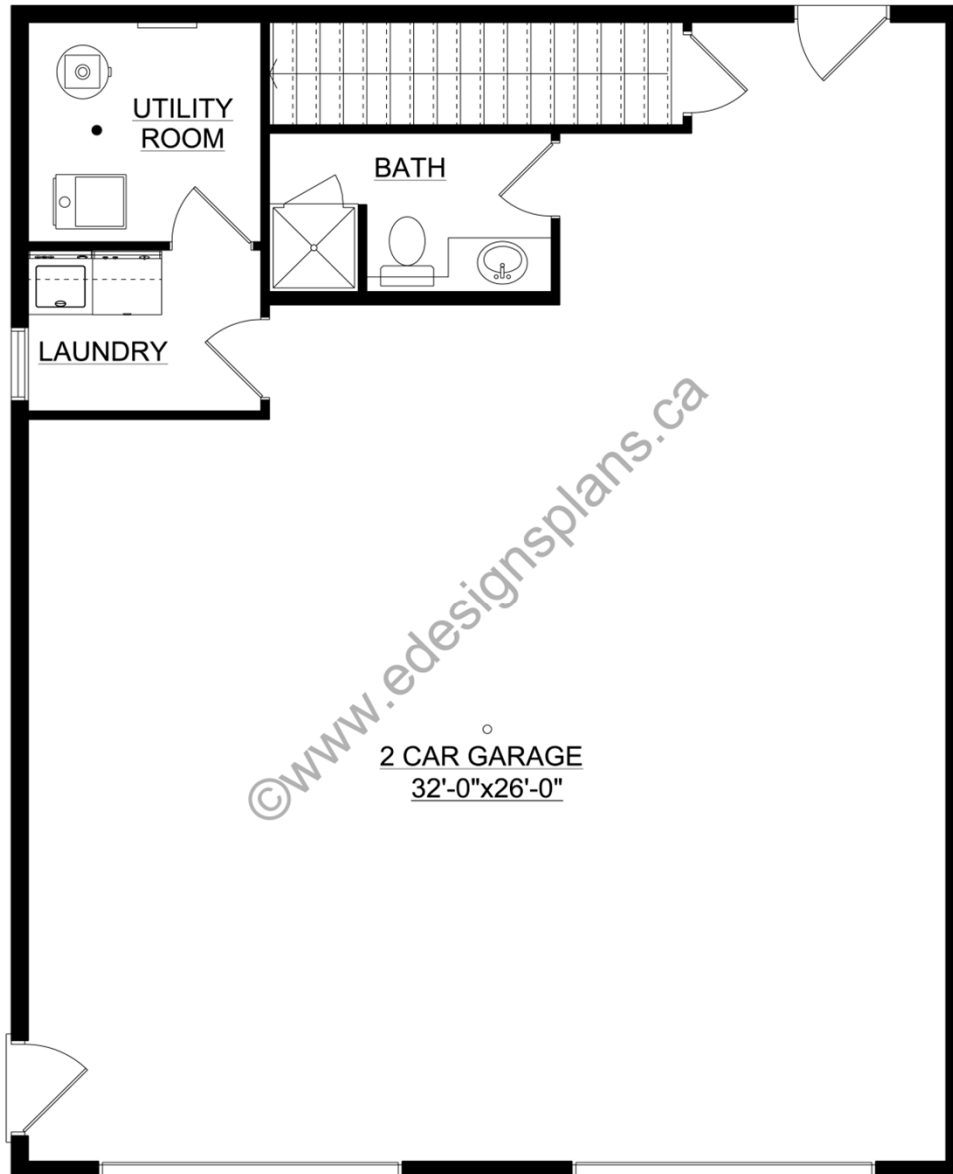
For more information about this plan contact the designer at: info@edesignsplans.ca.

Plan 2015906

www.edesignsplans.ca

[Call Us 1-855-675-1800](tel:1-855-675-1800)

Main Floor



This Plan is Protected by Copyright Laws

PROTECTED BY COPYRIGHT LAWS.
PROPERTY OF **E-DESIGNS PLANS INC.**

Plan 2015906

www.edesignsplans.ca

Call Us 1-855-675-1800

Second Floor

