

E-Designs Plans Inc.

A western Canadian company from Alberta that designs and ships home plans all across Canada, the US, and Overseas.

For more information about this plan contact the designer at: info@edesignsplans.ca.

Plan #: 2016984 Front Elevation

www.edesignsplans.ca

Call Us 1-855-675-1800



Rear Elevation



2-Storey with 2-Car Garage

829 Sq. Ft. Main Floor
818 Sq. Ft. Second Floor
1647 Sq. Ft. Total Living Area

Width: 33'-4"
Depth: 54'-0" plus Deck
Bedrooms: 4
Bathrooms: 3 & a Half Bath
Main Floor Laundry: Yes
Walk-in Pantry: Yes
Office/Den: Yes

Plan #: 2016984

Exterior Walls: 2x6 x 8 Ft. (Main Floor)
2x6 x 8 Ft. (Second Floor)
Foundation: 8' Concrete Wall
(Other Foundations Available)
Special Ceilings: None
Fireplace: Yes
Deck(s): Rear
Veranda: No
Attached Garage: Yes (2-Car with 16'x7' Door)
Finished Basement Plan: Yes

2-Storey with 2-Car Garage. Just inside the garage entrance, the front entry of this plan has a small mudroom with closet, laundry, and a 2-piece bathroom. The kitchen, dining room, and great room are all open concept. A gas fireplace is centered on the great room wall. The dining area is bayed out for more table space. The kitchen has an island and walk-in pantry. A garden door between the dining room and great room leads to the rear deck. At the front of the house is a home office or flex room. Upstairs are 3 bedrooms and a full bathroom. The master suite also has its own 5-piece ensuite. Downstairs is 1 more bedroom, a 3-piece bathroom, mechanical room, and large family room. The 2-car garage is 24' deep and has a 16'x7' door.

E-Designs Plans Inc.

A western Canadian company from Alberta that designs and ships home plans all across Canada, the US, and Overseas.

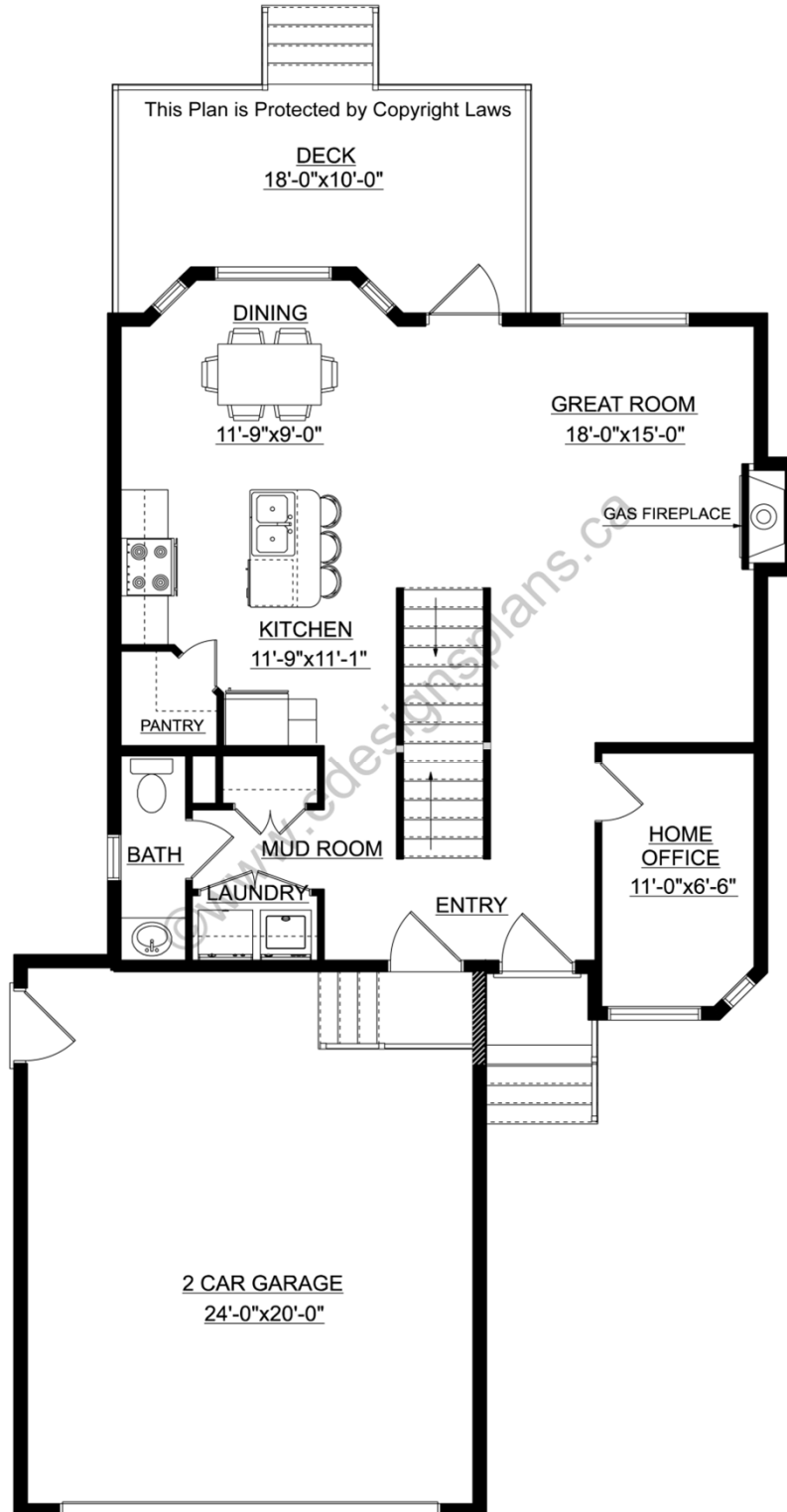
For more information about this plan contact the designer at: info@edesignsplans.ca.

Plan 2016984

www.edesignsplans.ca

[Call Us 1-855-675-1800](tel:1-855-675-1800)

Main Floor



PROTECTED BY COPYRIGHT LAWS.
PROPERTY OF **E-DESIGNS PLANS INC.**

E-Designs Plans Inc.

A western Canadian company from Alberta that designs and ships home plans all across Canada, the US, and Overseas.

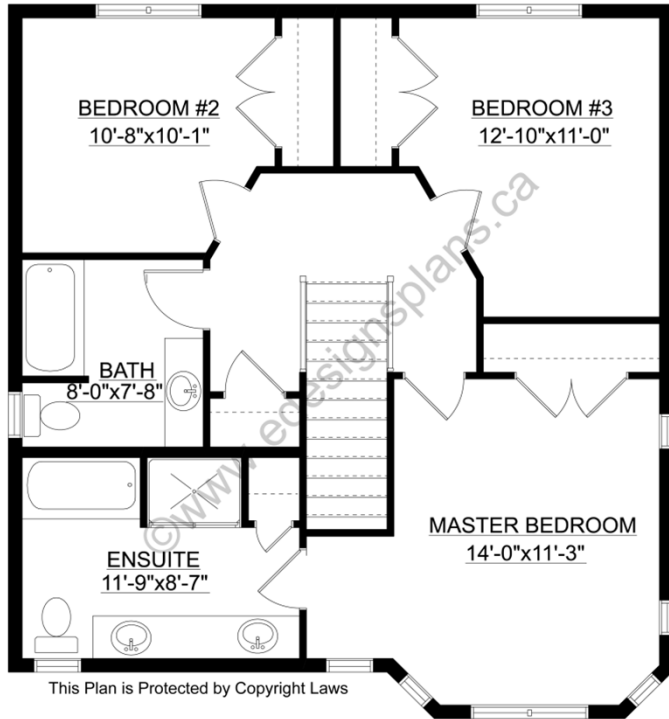
For more information about this plan contact the designer at: info@edesignsplans.ca.

Plan 2016984

www.edesignsplans.ca

Call Us 1-855-675-1800

Second Floor



Basement

