

E-Designs Plans Inc.

A western Canadian company from Alberta that designs and ships home plans all across Canada, the US, and Overseas.

For more information about this plan contact the designer at: info@edesignsplans.ca.

Plan #: 2016985 Front Elevation

www.edesignsplans.ca

Call Us 1-855-675-1800



Rear Elevation



2-Storey with 2-Car Garage

720 Sq. Ft. Main Floor
994 Sq. Ft. Second Floor
1714 Sq. Ft. Total Living Area

Width: 26'-0"
Depth: 53'-0" plus Deck
Bedrooms: 4
Bathrooms: 3 & a Half Bath
Main Floor Laundry: No
Walk-in Pantry: Yes
Office/Den: No

Plan #: 2016985

Exterior Walls: 2x6 x 8 Ft. (Main Floor)
2x6 x 8 Ft. (Second Floor)
Foundation: 9' Concrete Wall
(Other Foundations Available)
Special Ceilings: None
Fireplace: Yes
Deck(s): Rear
Veranda: Yes
Attached Garage: Yes (2-Car with 16'x7' Door)
Finished Basement Plan: Yes (with 702 Sq. Ft. Suite)

2-Storey with 2-Car Garage. This plan has an open concept layout on the main floor. There is a wood burning fireplace in the great room. Double garden doors lead from the dining room to the rear deck. The kitchen has an island with lunch counter and a walk-in pantry. Just inside the garage entrance is a half bath. There are closets located by both entrances. The garage also has a large sink for easy clean-up. Upstairs are 3 bedrooms with the master bedroom over the garage. It has a large walk-in closet and 4-piece ensuite including a corner tub. Laundry is located on this level for added convenience. A separate side entrance takes you into the basement, which has been designed as a small suite with family room, bedroom, bathroom and a wet bar. The mechanical room for all 3 levels is located here with a separate entrance from outside the suite area. Perfect basement layout for a rental.

E-Designs Plans Inc.

A western Canadian company from Alberta that designs and ships home plans all across Canada, the US, and Overseas.

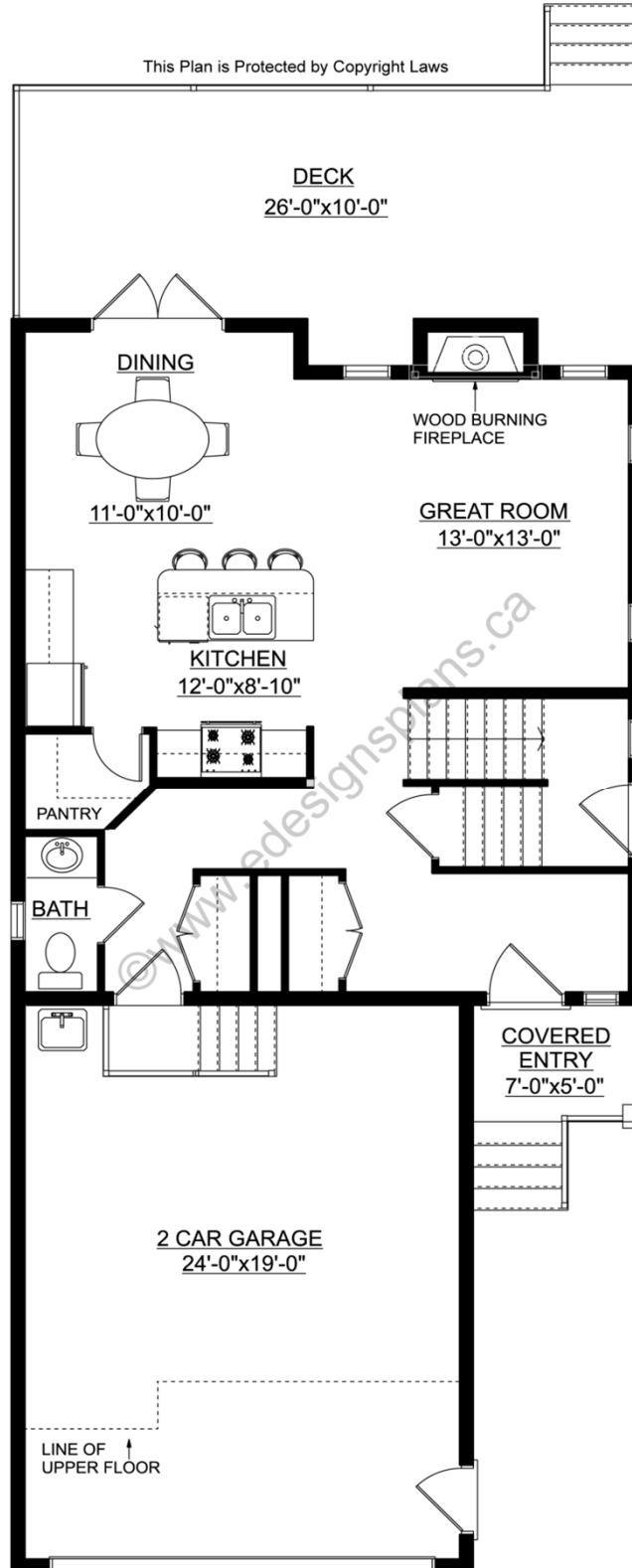
For more information about this plan contact the designer at: info@edesignsplans.ca.

Plan 2016985

www.edesignsplans.ca

[Call Us 1-855-675-1800](tel:1-855-675-1800)

Main Floor



PROTECTED BY COPYRIGHT LAWS.
PROPERTY OF **E-DESIGNS PLANS INC.**

E-Designs Plans Inc.

A western Canadian company from Alberta that designs and ships home plans all across Canada, the US, and Overseas.

For more information about this plan contact the designer at: info@edesignsplans.ca.

Plan 2016985

www.edesignsplans.ca

Call Us 1-855-675-1800

Second Floor



Basement

