

# E-Designs Plans Inc.

A western Canadian company from Alberta that designs and ships home plans all across Canada, the US, and Overseas.

For more information about this plan contact the designer at: [info@edesignsplans.ca](mailto:info@edesignsplans.ca).

**Plan #: 2016994 Front Elevation**

[www.edesignsplans.ca](http://www.edesignsplans.ca)

[Call Us 1-855-675-1800](tel:1-855-675-1800)



**Rear Elevation**



## **2-Storey with 1-Car Garage**

505 Sq. Ft. Main Floor

682 Sq. Ft. Second Floor

1187 Sq. Ft. Total Living Area

Width: 22'-0"

Depth: 48'-0" plus Deck

Bedrooms: 3

Bathrooms: 3 & a Half Bath

Main Floor Laundry: Yes

Walk-in Pantry: No

Office/Den: No

## **Plan #: 2016994**

Exterior Walls:

Foundation:

Special Ceilings:

Fireplace:

Deck(s):

Veranda:

Attached Garage:

Finished Basement Plan:

2x6 x 8 Ft. (Main Floor)

2x6 x 8 Ft. (Second Floor)

9' Concrete Wall

(Other Foundations Available)

Vaulted Second Floor

Yes

Rear

Yes (Covered)

Yes (1-Car with 9'x8' Door)

Yes

## **2-Storey Plan with Single Car Garage & Basement Suite:**

This plan is narrow, so great for a narrow or infill lot. Enter from the front covered veranda or from the single car attached garage. The laundry room and a half bath are immediately inside by the entry. The U-shaped kitchen is open to the dining and living room. Double garden doors lead from the dining room to the rear deck. A fireplace is centered between the dining and living rooms as well. Upstairs are 3 bedrooms, the master with its own 3-piece ensuite and large closet. The other 2 bedrooms share a 3-piece bath. The basement has a recreation room, wet bar, mechanical room, 3-piece bathroom and stackable washer/dryer. It could be set up as an optional suite as there is a separate entrance on the side of the house that takes you to the basement.

# E-Designs Plans Inc.

A western Canadian company from Alberta that designs and ships home plans all across Canada, the US, and Overseas.

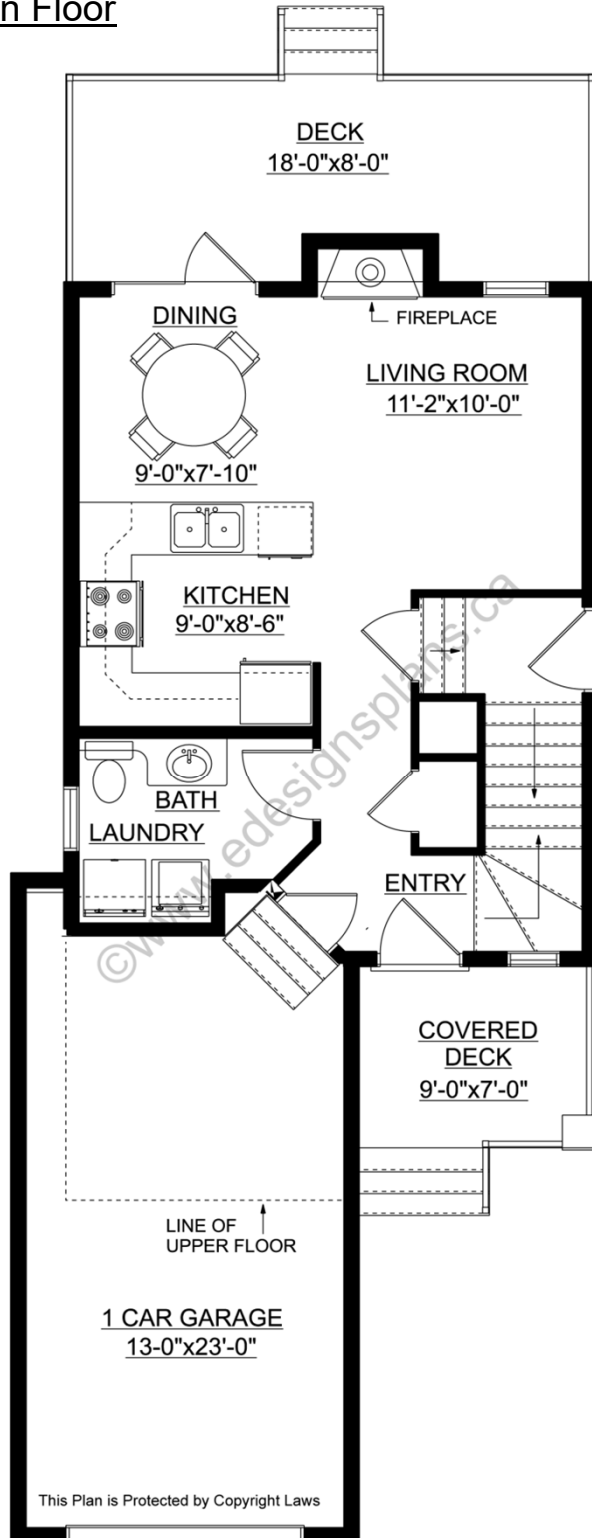
For more information about this plan contact the designer at: [info@edesignsplans.ca](mailto:info@edesignsplans.ca).

Plan 2016994

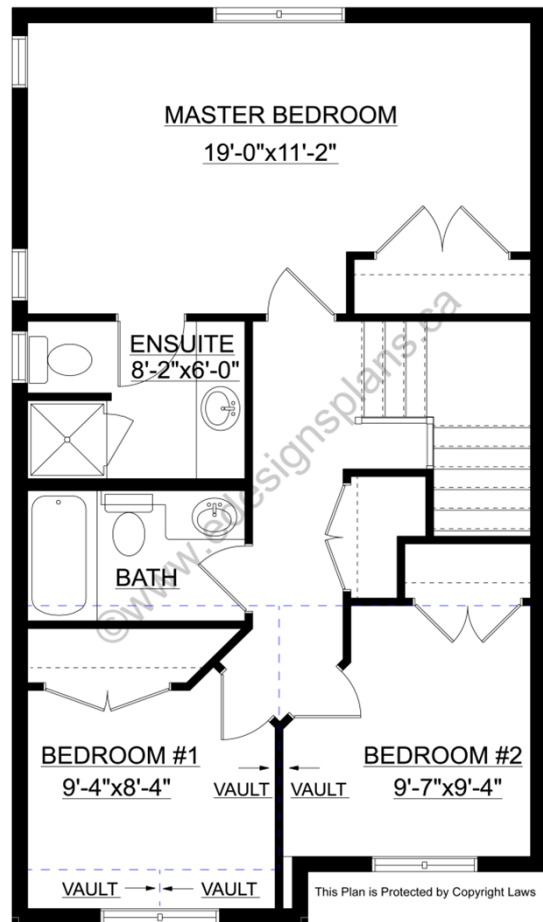
[www.edesignsplans.ca](http://www.edesignsplans.ca)

Call Us 1-855-675-1800

## Main Floor



## Second Floor



PROTECTED BY COPYRIGHT LAWS.  
PROPERTY OF **E-DESIGNS PLANS INC.**

# *E-Designs Plans Inc.*

A western Canadian company from Alberta that designs and ships home plans all across Canada, the US, and Overseas.

For more information about this plan contact the designer at: [info@edesignsplans.ca](mailto:info@edesignsplans.ca).

Plan 2016994

[www.edesignsplans.ca](http://www.edesignsplans.ca)

[Call Us 1-855-675-1800](tel:1-855-675-1800)

## Basement

