

E-Designs Plans Inc.

A western Canadian company from Alberta that designs and ships home plans all across Canada, the US, and Overseas.

For more information about this plan contact the designer at: info@edesignsplans.ca.

Plan #: 2017120 Front Elevation

www.edesignsplans.ca

Call Us 1-855-675-1800



Rear Elevation



2-Storey with 2-Car Garage

716 Sq. Ft. Main Floor
781 Sq. Ft. Second Floor
1497 Sq. Ft. Total Living Area

Width: 29'-3"
Depth: 64'-0"
Bedrooms: 4
Bathrooms: 3 & a Half Bath
Main Floor Laundry: No
Walk-in Pantry: No
Office/Den: No

Plan #: 2017120

Exterior Walls: 2x6 x 8 Ft. (Main Floor)
2x6 x 8 Ft. (Second Floor)
Foundation: 9 Concrete Wall
(Other Foundations Available)
Special Ceilings: None
Fireplace: No
Deck(s): Rear (Covered)
Veranda: Yes (Covered)
Attached Garage: Yes (2-Car with 16'x8' Door)
Finished Basement Plan: Yes

2-Storey with 2-Car Garage. Enter from the attached 2-car garage or from the covered front veranda. A half bath is right beside the front entry for easy clean-up before entering the house. The U-shaped kitchen is open to the dining and living rooms. The countertop has additional seating built in on the dinette side. Double garden doors lead out to the rear covered deck, which has access to the rear yard. The garage also has a man door to the rear yard. Upstairs are 3 bedrooms and laundry. The master bedroom has its own 3-piece ensuite and his and hers walk-in closets. The other 2 bedrooms share a 3-piece bath. One of the bedrooms also has a walk-in closet. The basement is finished with an additional bedroom, recreation room, 3-piece bathroom, lots of storage, and the mechanical room. This bedroom has a walk-in closet as well. Lots of space for the entire family.

E-Designs Plans Inc.

A western Canadian company from Alberta that designs and ships home plans all across Canada, the US, and Overseas.

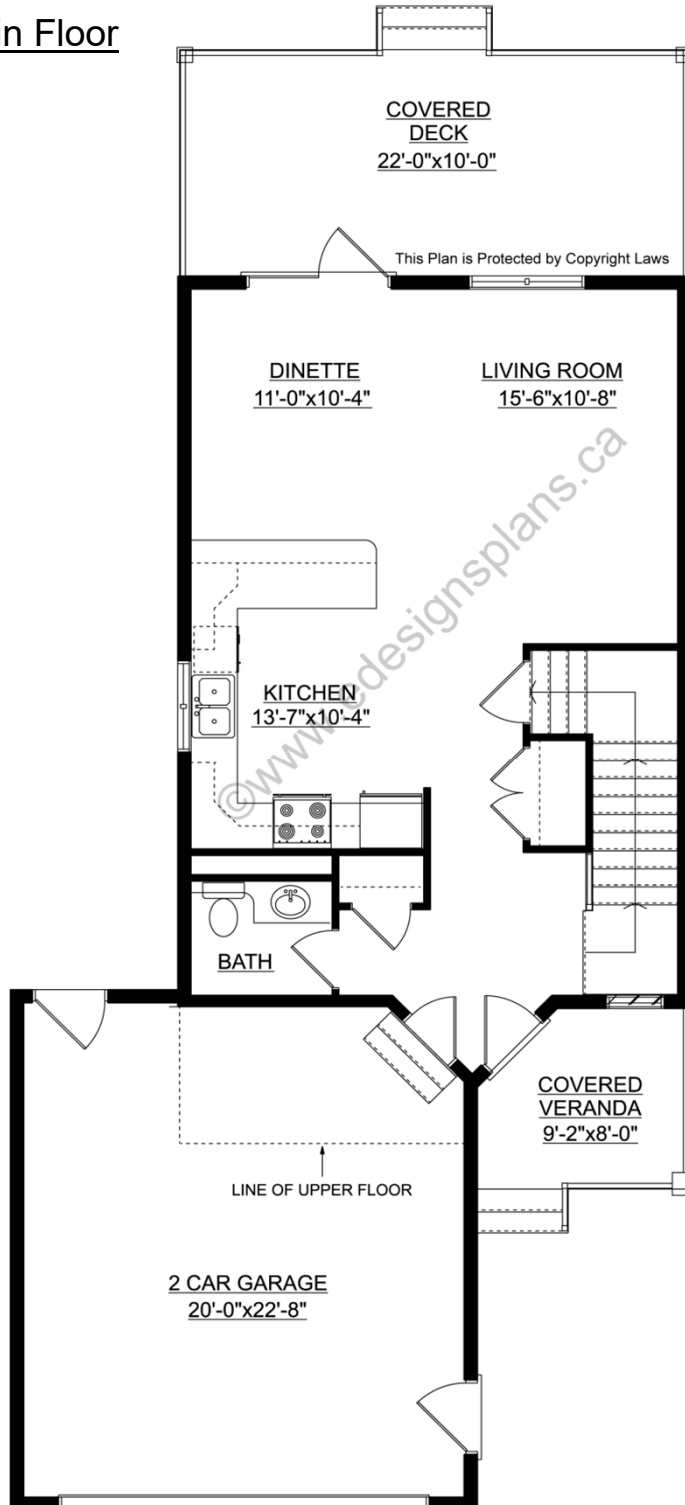
For more information about this plan contact the designer at: info@edesignsplans.ca.

Plan 2017120

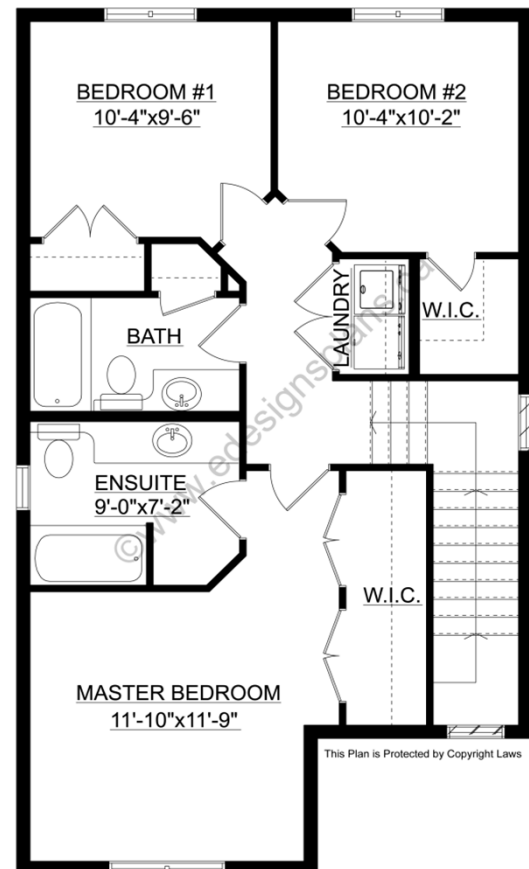
www.edesignsplans.ca

[Call Us 1-855-675-1800](tel:1-855-675-1800)

Main Floor



Second Floor



PROTECTED BY COPYRIGHT LAWS.
PROPERTY OF **E-DESIGNS PLANS INC.**

E-Designs Plans Inc.

A western Canadian company from Alberta that designs and ships home plans all across Canada, the US, and Overseas.

For more information about this plan contact the designer at: info@edesignsplans.ca.

Plan 2017120

www.edesignsplans.ca

[Call Us 1-855-675-1800](tel:1-855-675-1800)

Basement



This Plan is Protected by Copyright Laws UPPER FLOOR