

# E-Designs Plans Inc.

A western Canadian company from Alberta that designs and ships home plans all across Canada, the US, and Overseas.

For more information about this plan contact the designer at: [info@edesignsplans.ca](mailto:info@edesignsplans.ca).

**Plan #: 2017166 Front Elevation**

[www.edesignsplans.ca](http://www.edesignsplans.ca)

[Call Us 1-855-675-1800](tel:1-855-675-1800)



## **4-Plex with 1-Car Garage**

**1033 Sq. Ft. per Unit**

Width: 100'-0"  
 Depth: 63'-0"  
 Bedrooms: 2  
 Bathrooms: 1  
 Main Floor Laundry: Yes  
 Walk-in Pantry: Yes  
 Office/Den: No

## **Plan #: 2017166**

Exterior Walls: 2x6 or 2x4 x 8 Ft. (Main Floor)  
 Foundation: Slab on Grade  
 (Other Foundations Available)  
 Special Ceilings: None  
 Fireplace: No  
 Deck(s): Rear Patio  
 Veranda: Yes (Patio - Covered)  
 Attached Garage: Yes (1-Car with 9'x7' Door)  
 Finished Basement Plan: No

**4-Plex with 1-Car Garage.** The single car garages on these units are a nice size. Enter the living area via the garage or from the front covered patio into the great room. The kitchen has a walk-in pantry with the dinette area directly across from it. Two bedrooms are situated in the rear and share a 3-piece bathroom. The master suite has a large walk-in closet and access to the rear patio. Laundry is accommodated in each unit, and each unit also has its own utility room.

# E-Designs Plans Inc.

A western Canadian company from Alberta that designs and ships home plans all across Canada, the US, and Overseas.

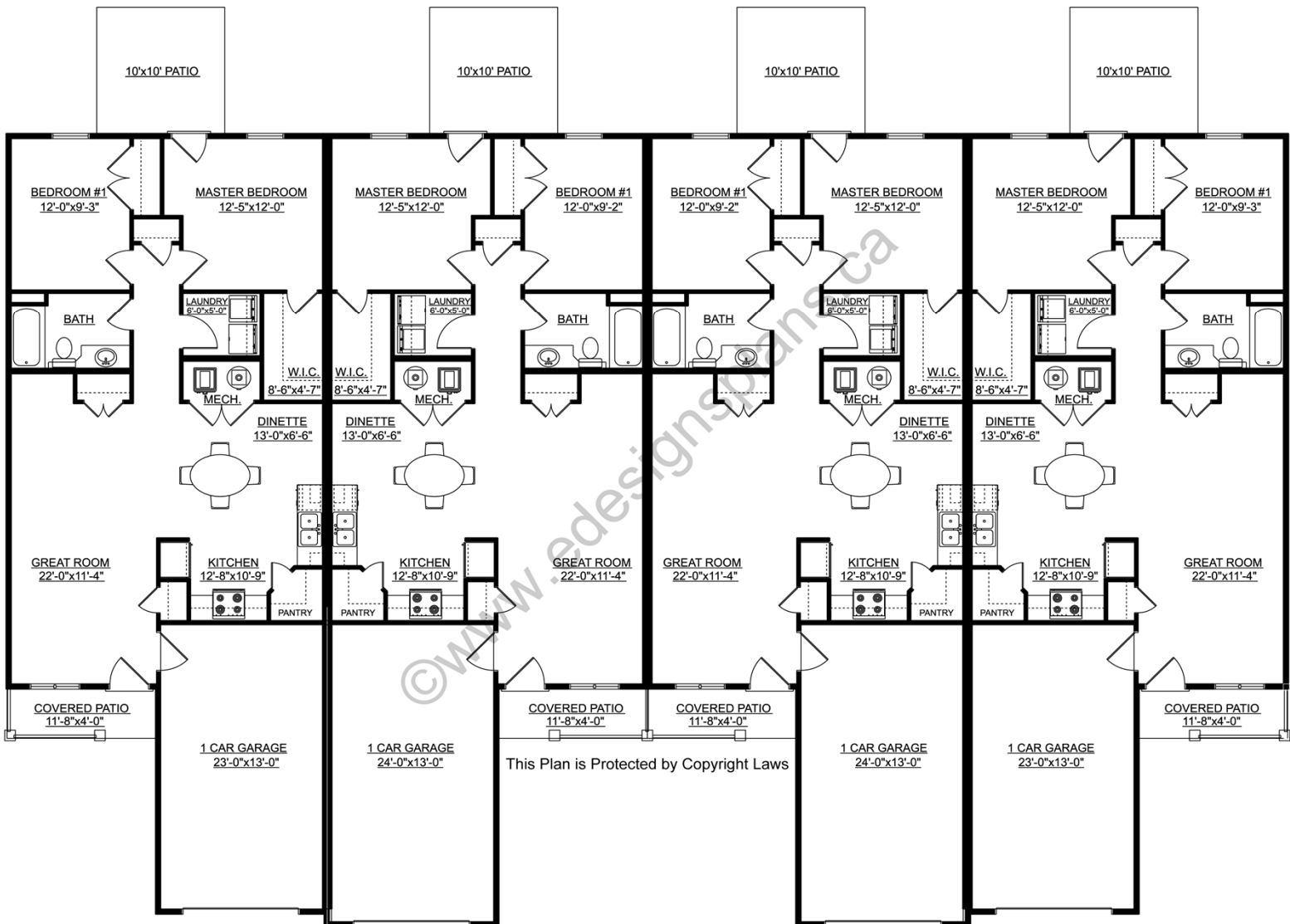
For more information about this plan contact the designer at: [info@edesignsplans.ca](mailto:info@edesignsplans.ca).

Plan 2017166

[www.edesignsplans.ca](http://www.edesignsplans.ca)

Call Us 1-855-675-1800

## Main Floor



PROTECTED BY COPYRIGHT LAWS.  
PROPERTY OF **E-DESIGNS PLANS INC.**