

E-Designs *Plans Inc.*

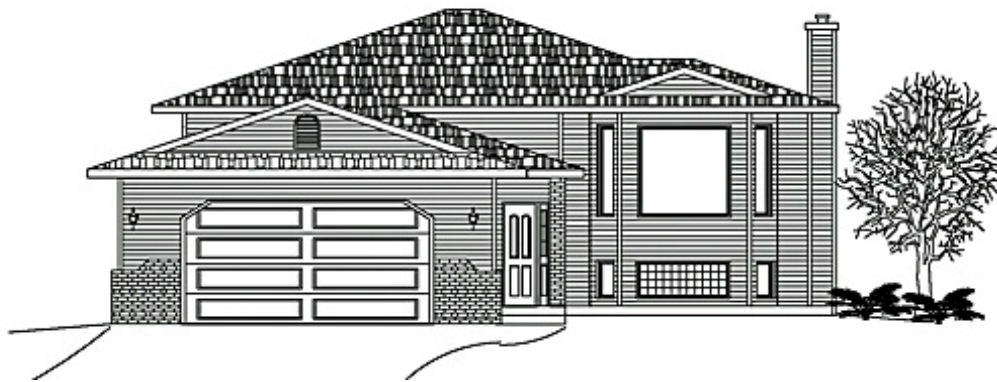
A western Canadian company from Alberta that designs and ships home plans all across Canada, the US, and Overseas.

For more information about this plan contact the designer at: info@edesignsplans.ca.

Plan #: 2002118 Front Elevation

www.edesignsplans.ca

[Call Us 1-855-675-1800](tel:1-855-675-1800)



Bi-Level with 2-Car Garage

1506 Sq. Ft. Main Floor

Width: 45'-10"
Depth: 62'-0"
Bedrooms: 3
Bathrooms: 2
Main Floor Laundry: No
Walk-in Pantry: Yes
Office/Den: No

Plan #: 2002118

Exterior Walls: 2x6 x 8 Ft. (Main Floor)
Foundation: 8' Concrete Wall
(Other Foundations Available)
Special Ceilings: None
Fireplace: No
Deck(s): Side (Optional)
Veranda: No
Attached Garage: Yes (2-Car with 16'x7' Doors)
Finished Basement Plan: No

Bi-Level with 2-Car Garage. 1506 Sq. Ft. Split Entry Bi-Level with attached 2-car garage (22'x24'); very open plan; L-shape kitchen with island, walk-in pantry and access via double garden doors to deck; open dining room/living room area with large bay window and fireplace provisions; nice master bedroom with 3-piece ensuite and large walk-in closet, plus 2 additional bedrooms; undeveloped basement.

E-Designs Plans Inc.

A western Canadian company from Alberta that designs and ships home plans all across Canada, the US, and Overseas.

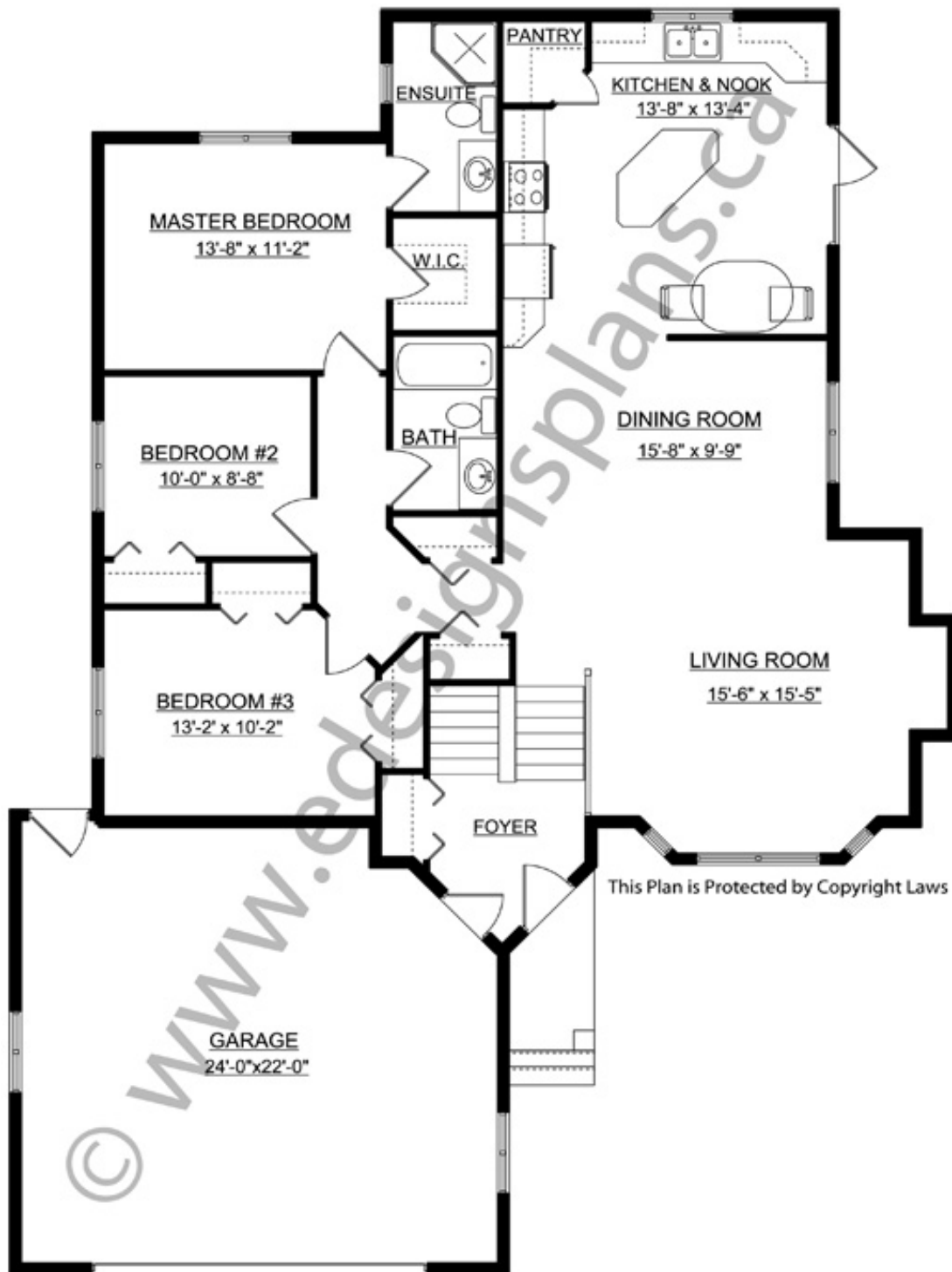
For more information about this plan contact the designer at: info@edesignsplans.ca.

Plan 2002118

www.edesignsplans.ca

[Call Us 1-855-675-1800](tel:1-855-675-1800)

Main Floor



PROTECTED BY COPYRIGHT LAWS.
PROPERTY OF **E-DESIGNS PLANS INC.**