

E-Designs Plans Inc.

A western Canadian company from Alberta that designs and ships home plans all across Canada, the US, and Overseas.

For more information about this plan contact the designer at: info@edesignsplans.ca.

Plan #: 2003121 Front Elevation

www.edesignsplans.ca

Call Us 1-855-675-1800



Rear Elevation



Split Entry Bi-Level

1220 Sq. Ft. Main Floor

Width: 39'-0"
 Depth: 32'-0"
 Bedrooms: 2
 Bathrooms: 2
 Main Floor Laundry: Yes
 Walk-in Pantry: No
 Office/Den: No

Plan #: 2003121

Exterior Walls: 2x6 x 8 Ft. (Main Floor)
 Foundation: 8' Concrete Wall
 (Other Foundations Available)
 Special Ceilings: None
 Fireplace: No
 Deck(s): Rear
 Veranda: No
 Attached Garage: No
 Finished Basement Plan: No

Split Entry Bi-Level. This bi-level has 2 bedrooms with the master bedroom having a 3-piece ensuite, walk-in closet, and huge bay window; main floor laundry; open from front to back; L-shaped kitchen with island, open to dinette and living room area; matching bay window in living room; matching large bay windows in basement; large elongated window over front entry; large deck in the rear with access by the laundry area between the kitchen and bedroom.

E-Designs Plans Inc.

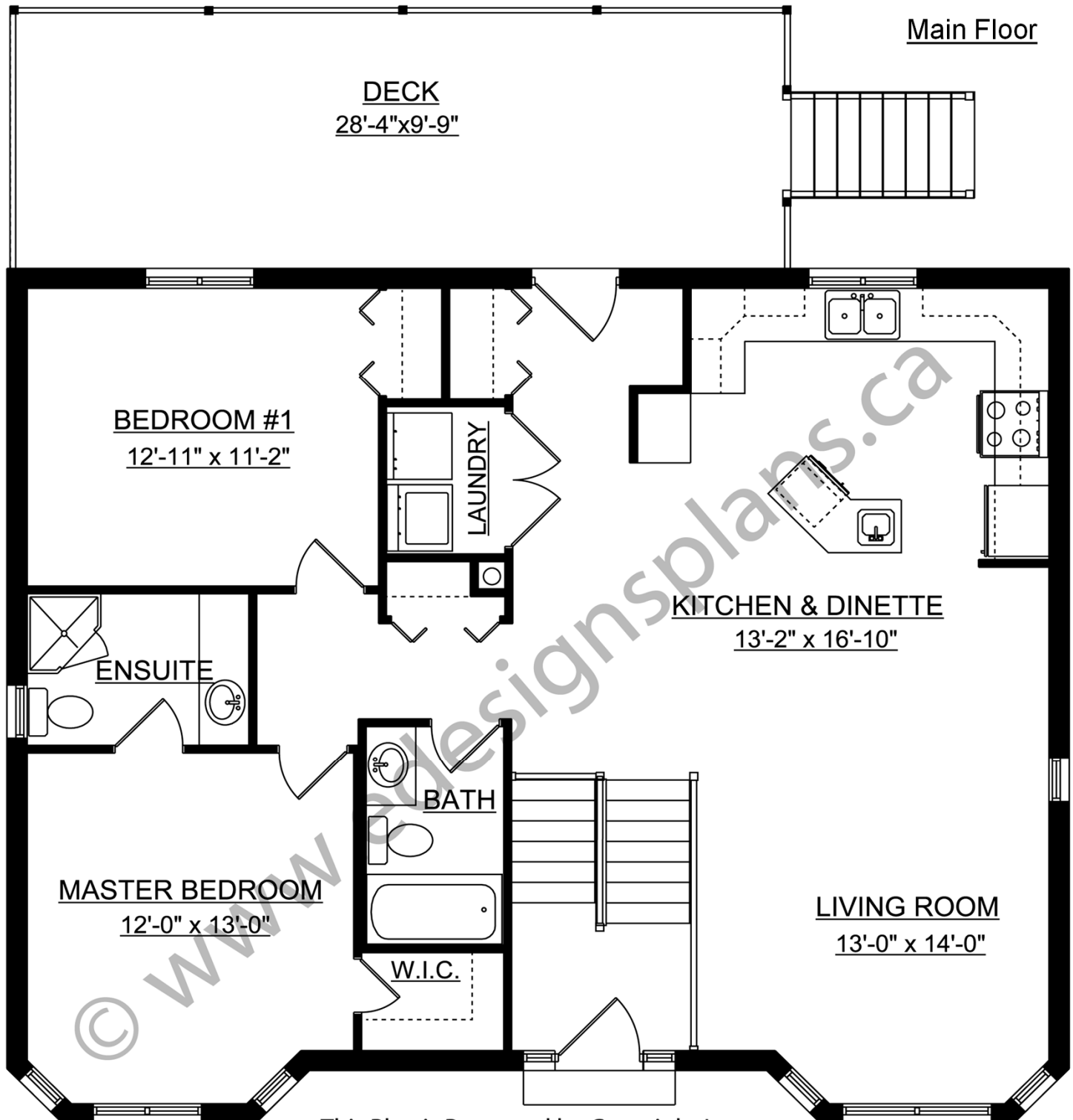
A western Canadian company from Alberta that designs and ships home plans all across Canada, the US, and Overseas.

For more information about this plan contact the designer at: info@edesignsplans.ca.

Plan 2003121

www.edesignsplans.ca

Call Us 1-855-675-1800



This Plan is Protected by Copyright Laws

PROTECTED BY COPYRIGHT LAWS.
PROPERTY OF **E-DESIGNS PLANS INC.**