

# E-Designs Plans Inc.

A western Canadian company from Alberta that designs and ships home plans all across Canada, the US, and Overseas.

For more information about this plan contact the designer at: [info@edesignsplans.ca](mailto:info@edesignsplans.ca).

**Plan #: 2003124 Front Elevation**

[www.edesignsplans.ca](http://www.edesignsplans.ca)

**Call Us 1-855-675-1800**



**Rear Elevation**



**Split Entry Bi-Level for Narrow Lot**  
1050 Sq. Ft. Main Floor

Width:	25'-0"
Depth:	42'-0"
Bedrooms:	2
Bathrooms:	2
Main Floor Laundry:	No
Pantry:	Yes
Office/Den:	No

**Plan #: 2003124**

Exterior Walls:	2x6 x 8 Ft. (Main Floor)
Foundation:	4'-6" 2x6 Pony Wall on 4' Concrete (Other Foundations Available)
Special Ceilings:	None
Fireplace:	No
Deck(s):	No
Veranda:	No
Attached Garage:	No
Finished Basement Plan:	No

**Split Entry Bi-Level for Narrow Lot.** Great starter home; L-shaped kitchen with island overlooking dining room and living room; two bedrooms, the master bedroom with an extra large walk-in closet and 3-piece ensuite; nice large windows in undeveloped basement; separate side entrance; great plan for narrow lots.

# E-Designs Plans Inc.

A western Canadian company from Alberta that designs and ships home plans all across Canada, the US, and Overseas.

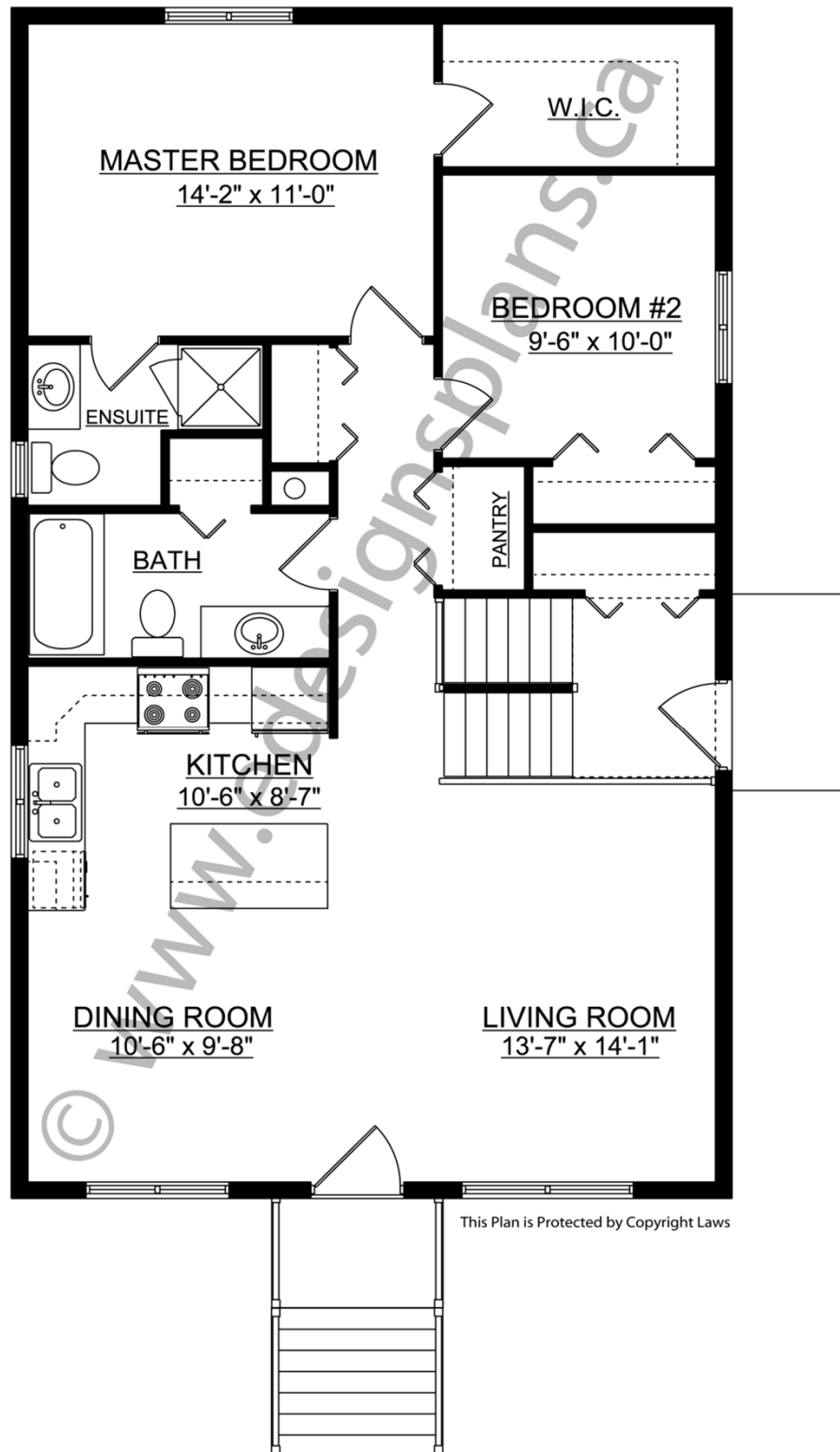
For more information about this plan contact the designer at: [info@edesignsplans.ca](mailto:info@edesignsplans.ca).

Plan 2003124

[www.edesignsplans.ca](http://www.edesignsplans.ca)

[Call Us 1-855-675-1800](tel:1-855-675-1800)

## Main Floor



This Plan is Protected by Copyright Laws

PROTECTED BY COPYRIGHT LAWS.  
PROPERTY OF **E-DESIGNS PLANS INC.**