

E-Designs Plans Inc.

A western Canadian company from Alberta that designs and ships home plans all across Canada, the US, and Overseas.

For more information about this plan contact the designer at: info@edesignsplans.ca.

Plan #: 2004135 Front Elevation

www.edesignsplans.ca

Call Us 1-855-675-1800



Rear Elevation

Inside View Looking from Rear

Bi-Level with Bonus Room & 3-Car Garage

1911 Sq. Ft. Total Living Area

Width: 53'-0"
 Depth: 62'-0" (plus deck)
 Bedrooms: 3
 Bathrooms: 2
 Main Floor Laundry: Yes
 Walk-in Pantry: Yes
 Office/Den: Yes

Plan #: 2004135

Exterior Walls: 2x6 x 8 Ft. (Main Floor)
 Foundation: 5' 2x6 Pony Wall on 4' Concrete (Other Foundations Available)
 Special Ceilings: Vaulted Main Floor & Master
 Fireplace: Yes
 Deck(s): Rear
 Veranda: No
 Attached Garage: Yes (3-Car - 16'x7' & 9'x7' Doors)
 Finished Basement Plan: No

1911 Sq. Ft. Executive Bi-Level: Very unique floor plan; dropped front entry leading up into great room with fireplace and vaulted ceiling; decorative columns divide foyer and great room; large size den off of front foyer; extra large kitchen with unique island and walk-in pantry; nook area with vault and double garden door leading onto rear deck; 2 bedrooms on main floor; 3-piece bath; main floor laundry; access from front entry into triple car garage (35'x24'); immediately off front entry, stairs to large master bedroom with walk-in closet and large 4-piece ensuite; bonus room has a vault from common area view over kitchen, great room, and nook; rear elevation has glass from main floor to roof line; full undeveloped basement.

**PROTECTED BY COPYRIGHT LAWS.
 PROPERTY OF *E-DESIGNS PLANS INC.***

E-Designs Plans Inc.

A western Canadian company from Alberta that designs and ships home plans all across Canada, the US, and Overseas.

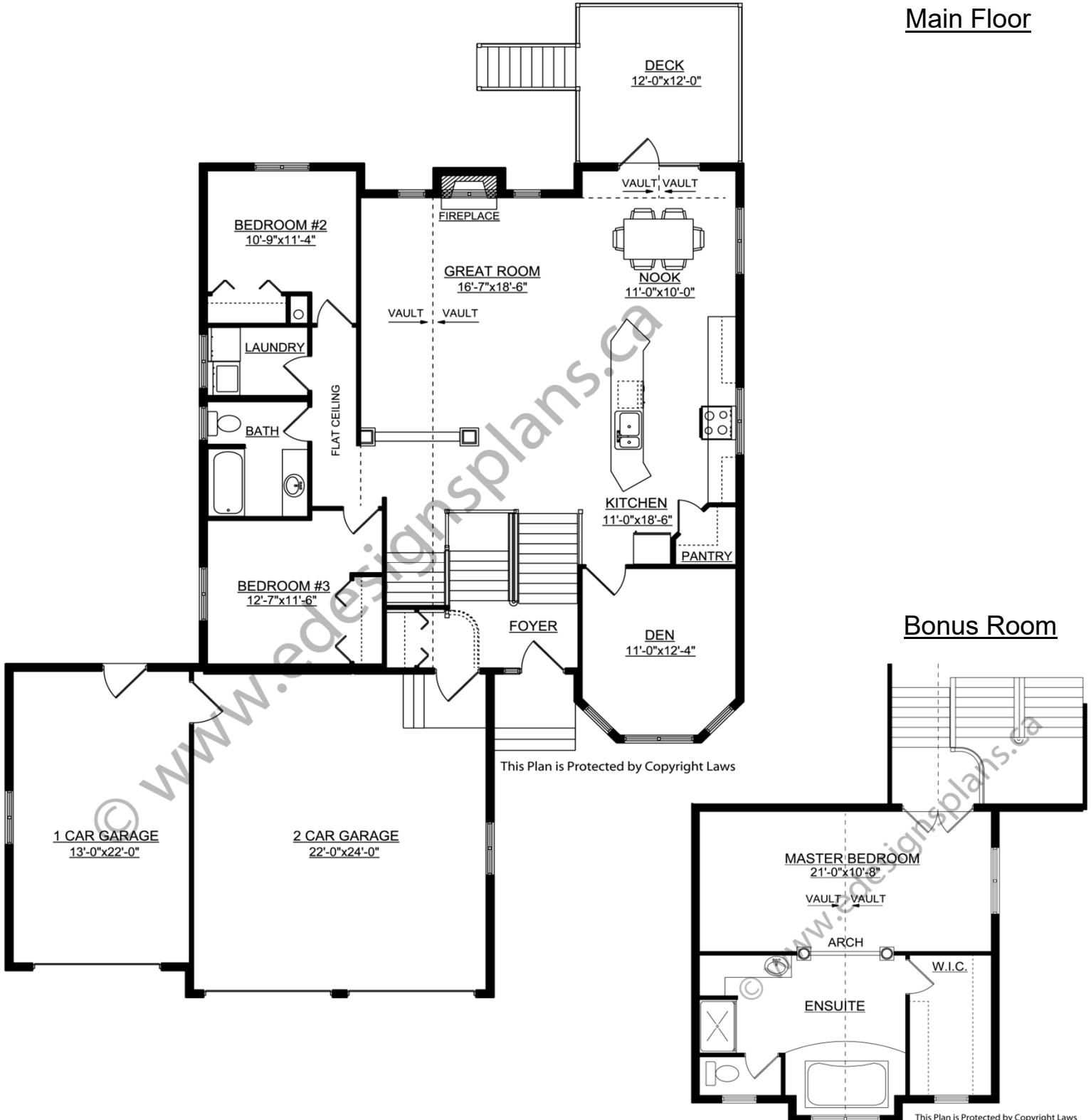
For more information about this plan contact the designer at: info@edesignsplans.ca.

Plan 2004135

www.edesignsplans.ca

Call Us 1-855-675-1800

Main Floor



Bonus Room

PROTECTED BY COPYRIGHT LAWS.
PROPERTY OF **E-DESIGNS PLANS INC.**

This Plan is Protected by Copyright Laws