

E-Designs Plans Inc.

A western Canadian company from Alberta that designs and ships home plans all across Canada, the US, and Overseas.

For more information about this plan contact the designer at: info@edesignsplans.ca.

Plan #: 2004142 Front Elevation

www.edesignsplans.ca

[Call Us 1-855-675-1800](tel:1-855-675-1800)



Rear Elevation



Bi-Level Plan

1272 Sq. Ft. Main Floor

Width: 43'-6"
Depth: 31'-10"
Bedrooms: 3
Bathrooms: 2
Main Floor Laundry: Yes
Walk-in Pantry: No
Office/Den: No

Plan #: 2004142

Exterior Walls: 2x6 x 8 Ft. (Main Floor)
Foundation: 8' PWF (Pressure Treated Wood)
(Other Foundations Available)
Special Ceilings: None
Fireplace: No
Deck(s): Rear
Veranda: No
Attached Garage: No
Finished Basement Plan: No

1272 Sq. Ft. Bi-Level. This is a great starter home with three bedrooms, a 3-piece ensuite off the master bedroom, a bay window in the living room, an L-shaped kitchen with working island, double garden doors from the dinette onto the rear deck, a dropped side entrance, and main floor laundry. The basement can be finished to create additional living space when desired.

PROTECTED BY COPYRIGHT LAWS.
PROPERTY OF **E-DESIGNS PLANS INC.**

E-Designs Plans Inc.

A western Canadian company from Alberta that designs and ships home plans all across Canada, the US, and Overseas.

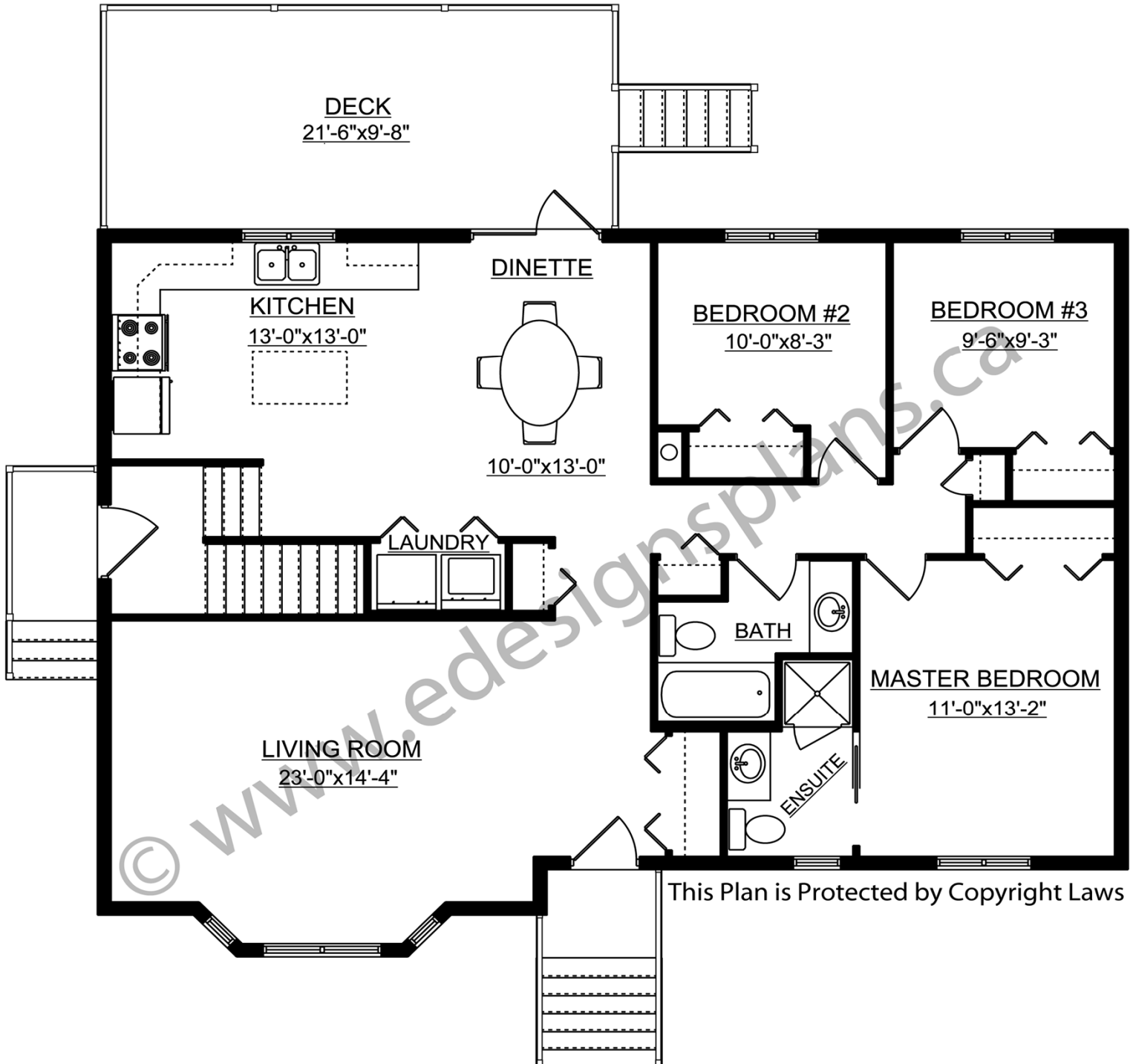
For more information about this plan contact the designer at: info@edesignsplans.ca.

Plan 2004142

www.edesignsplans.ca

Call Us 1-855-675-1800

Main Floor



PROTECTED BY COPYRIGHT LAWS.
PROPERTY OF **E-DESIGNS PLANS INC.**