

E-Designs *Plans Inc.*

A western Canadian company from Alberta that designs and ships home plans all across Canada, the US, and Overseas.

For more information about this plan contact the designer at: info@edesignsplans.ca.

Plan #: 2005207 Front Elevation

www.edesignsplans.ca

[Call Us 1-855-675-1800](tel:1-855-675-1800)



Bi-Level with 2-Car Garage
1588 Sq. Ft. Main Floor

Width: 75'-2"
Depth: 63'-6"
Bedrooms: 3
Bathrooms: 2
Main Floor Laundry: Yes
Walk-in Pantry: Yes
Office/Den: No

Plan #: 2005207

Exterior Walls: 2x6 x 9 Ft. (Main Floor)
Foundation: 9' ICF (Insulated Concrete Form)
(Other Foundations Available)
Special Ceilings: Vaulted Living Room & Master Suite
Fireplace: Yes
Deck(s): Rear
Veranda: No
Attached Garage: Yes (2-Car with 10'x8' Doors)
Finished Basement Plan: No

Bi-Level with 2-Car Garage. 1588 Sq. Ft. Split Entry Bi-Level with attached 2-car garage (28'x30'); 3 bedrooms; L-shaped kitchen with island, walk-in pantry overlooking great room and dinette area; this open plan has a vaulted ceiling in the main area, master bedroom, and an inverted vault in bedroom #2; main floor laundry; large master bedroom with 3-piece bath plus walk-in closet; large deck off great room; corner fireplace.

E-Designs Plans Inc.

A western Canadian company from Alberta that designs and ships home plans all across Canada, the US, and Overseas.

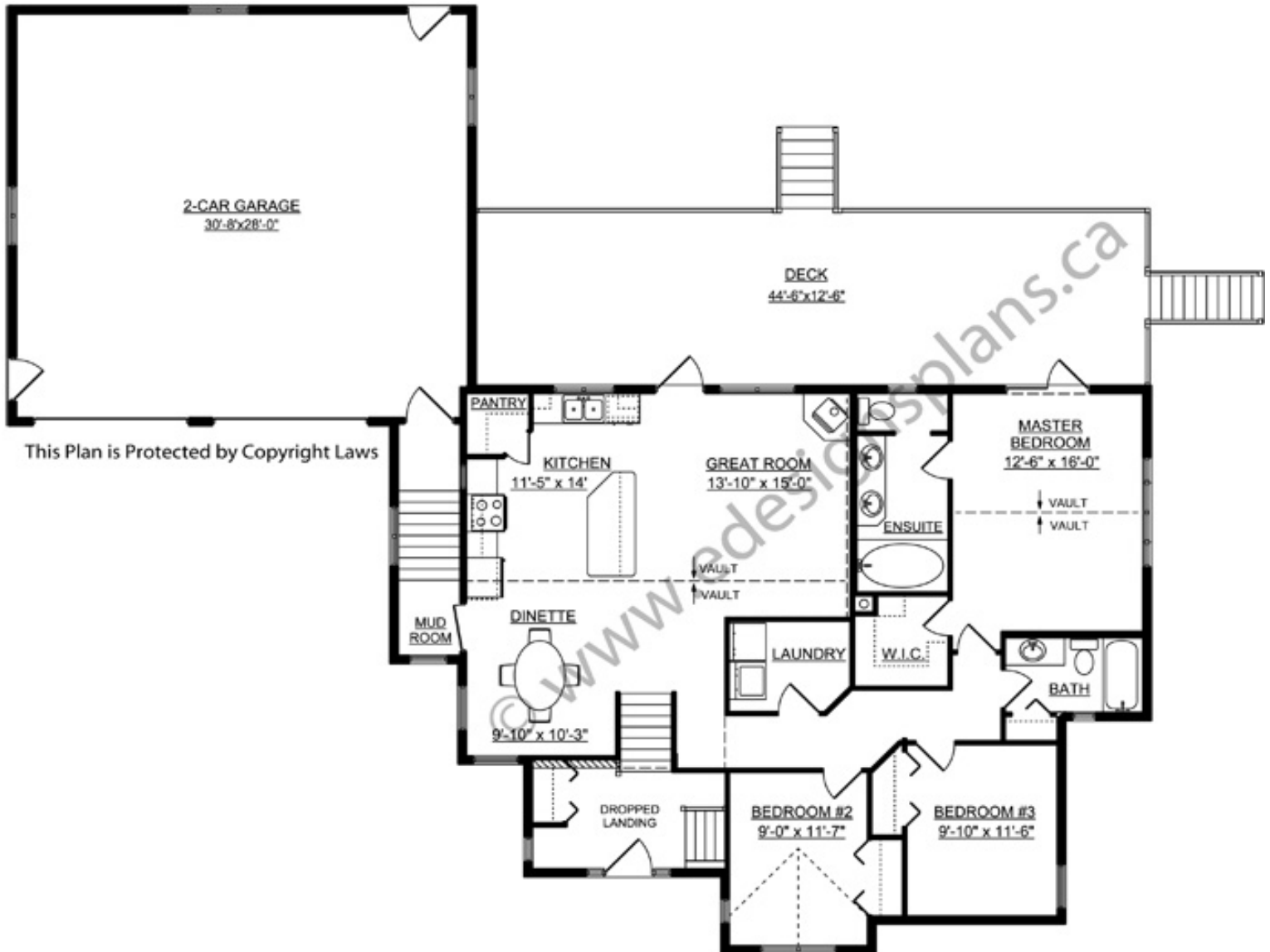
For more information about this plan contact the designer at: info@edesignsplans.ca.

Plan 2005207

www.edesignsplans.ca

[Call Us 1-855-675-1800](tel:1-855-675-1800)

Main Floor



This Plan is Protected by Copyright Laws