

E-Designs *Plans Inc.*

A western Canadian company from Alberta that designs and ships home plans all across Canada, the US, and Overseas.

For more information about this plan contact the designer at: info@edesignsplans.ca.

Plan #: 2006302 Front Elevation

www.edesignsplans.ca

Call Us 1-855-675-1800



Rear Elevation



Bi-Level with 2-Car Garage
1374 Sq. Ft. Main Floor

Width: 43'-6"
Depth: 66'-0" (plus deck)
Bedrooms: 3
Bathrooms: 2
Main Floor Laundry: Yes
Walk-in Pantry: Yes
Office/Den: No

Plan #: 2006302

Exterior Walls: 2x6 x 8 Ft. (Main Floor)
Foundation: 4' 2x6 Pony Wall on 4' ICF (Other Foundations Available)
Special Ceilings: Vaulted Kitchen/Dining/Living Rm
Fireplace: No
Deck(s): Rear
Veranda: No
Attached Garage: Yes (2-Car with 16'x7' Door)
Finished Basement Plan: No

Open Concept Bi-Level Plan. From the large front foyer you can either go up to the main level or down to the basement level. The main floor has three bedrooms including one master suite with its own walk-in closet and ensuite. The living room, kitchen and nook are all one open concept with a vaulted ceiling. Double garden doors lead out to the large rear deck. A laundry room is conveniently located by the bedrooms. The two-car attached garage has enough room for a workbench at the front, and also has a mandoor on the side. It has superb curb appeal with the high post detail, multi- roof lines, and stone trim. It would look great in any neighborhood.

PROTECTED BY COPYRIGHT LAWS.
PROPERTY OF ***E-DESIGNS PLANS INC.***

E-Designs Plans Inc.

A western Canadian company from Alberta that designs and ships home plans all across Canada, the US, and Overseas.

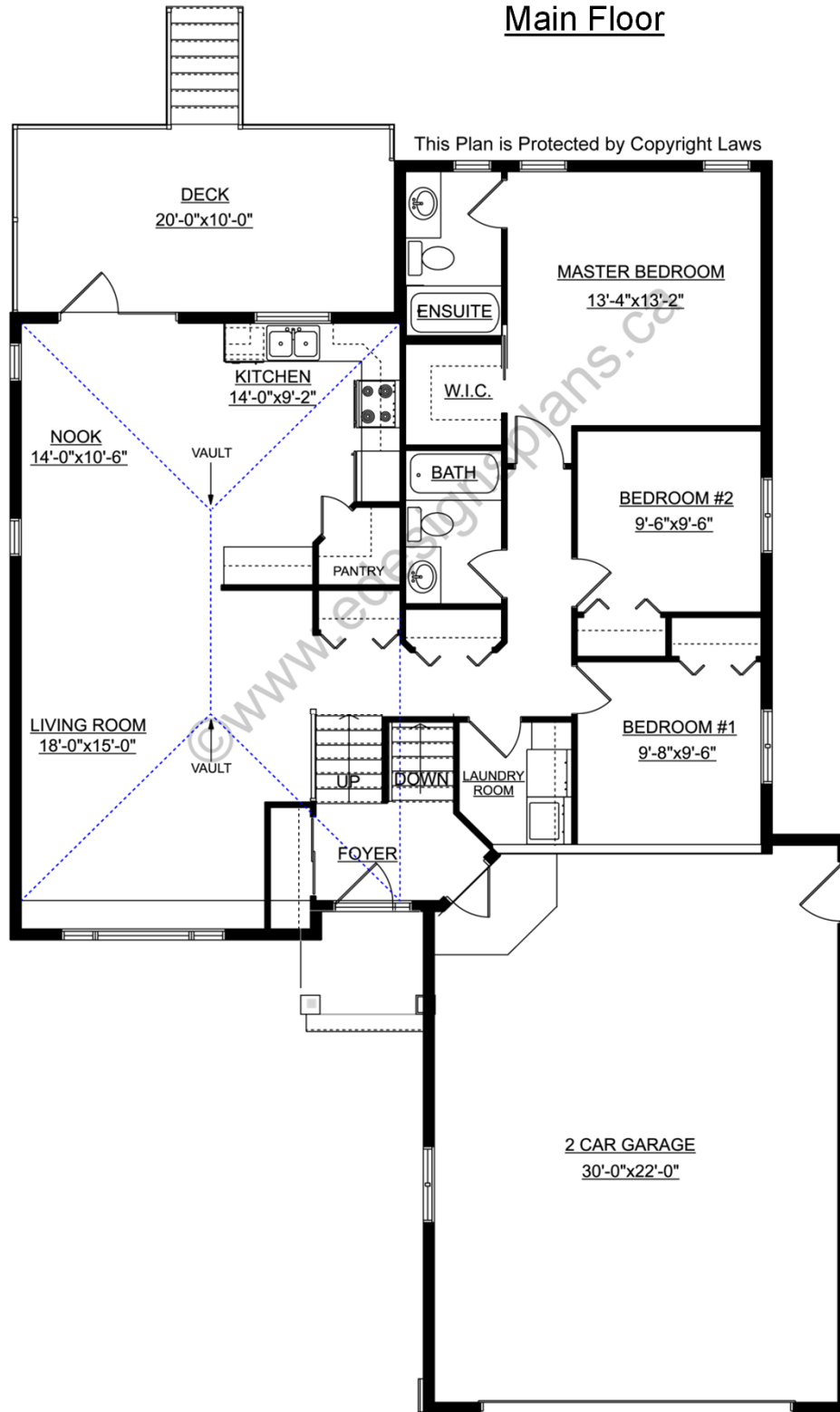
For more information about this plan contact the designer at: info@edesignsplans.ca.

Plan 2006302

www.edesignsplans.ca

Call Us 1-855-675-1800

Main Floor



PROTECTED BY COPYRIGHT LAWS.
PROPERTY OF **E-DESIGNS PLANS INC.**