

E-Designs *Plans Inc.*

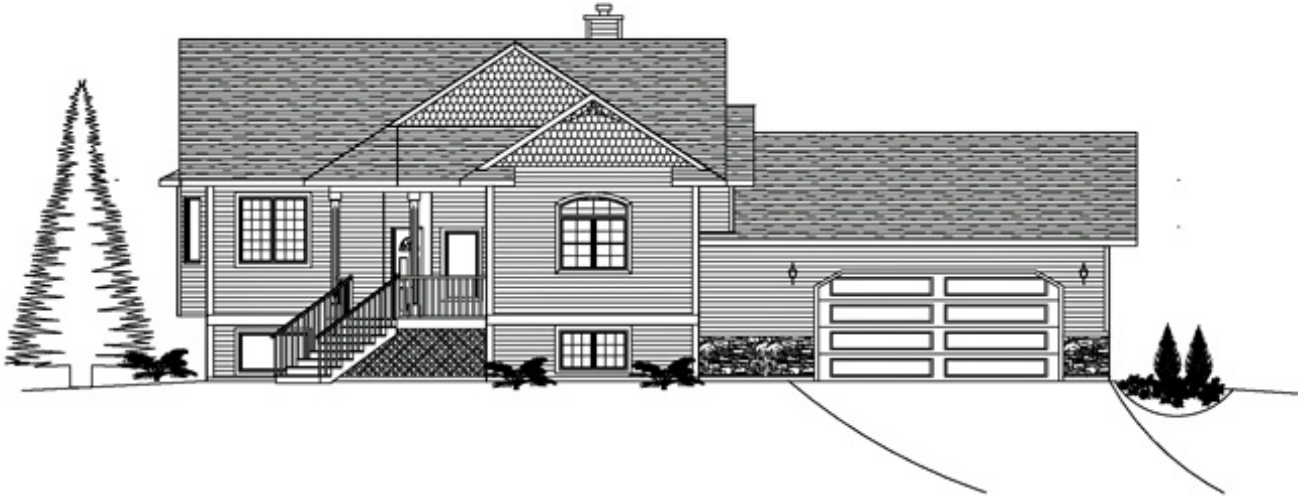
A western Canadian company from Alberta that designs and ships home plans all across Canada, the US, and Overseas.

For more information about this plan contact the designer at: info@edesignsplans.ca.

Plan #: 2006306 Front Elevation

www.edesignsplans.ca

[Call Us 1-855-675-1800](tel:1-855-675-1800)



Bi-Level with 2-Car Garage

1513 Sq. Ft. Main Floor

Width: 63'-6"
Depth: 31'-2"
Bedrooms: 2
Bathrooms: 2
Main Floor Laundry: Yes
Walk-in Pantry: No
Office/Den: No

Plan #: 2006306

Exterior Walls: 2x6 x 8 Ft. (Main Floor)
Foundation: 8' Concrete Wall
(Other Foundations Available)
Special Ceilings: Coffered Living Room
Fireplace: Yes
Deck(s): Rear (Covered)
Veranda: No
Attached Garage: Yes (2-Car with 18'x8' Door)
Finished Basement Plan: No

Bi-Level with 2-Car Garage. Split Entry Bi-Level; suitable for a corner lot; very nice curb appeal; has attached 2-car garage (27'x27'); 2 bedrooms; living room (with 10'x10' coffered ceiling) flowing into dining area which has a large bay window and double garden doors onto covered deck; U-shaped kitchen; main floor laundry; master bedroom with large walk-in closet and 4-piece ensuite; large windows in basement area.

E-Designs Plans Inc.

A western Canadian company from Alberta that designs and ships home plans all across Canada, the US, and Overseas.

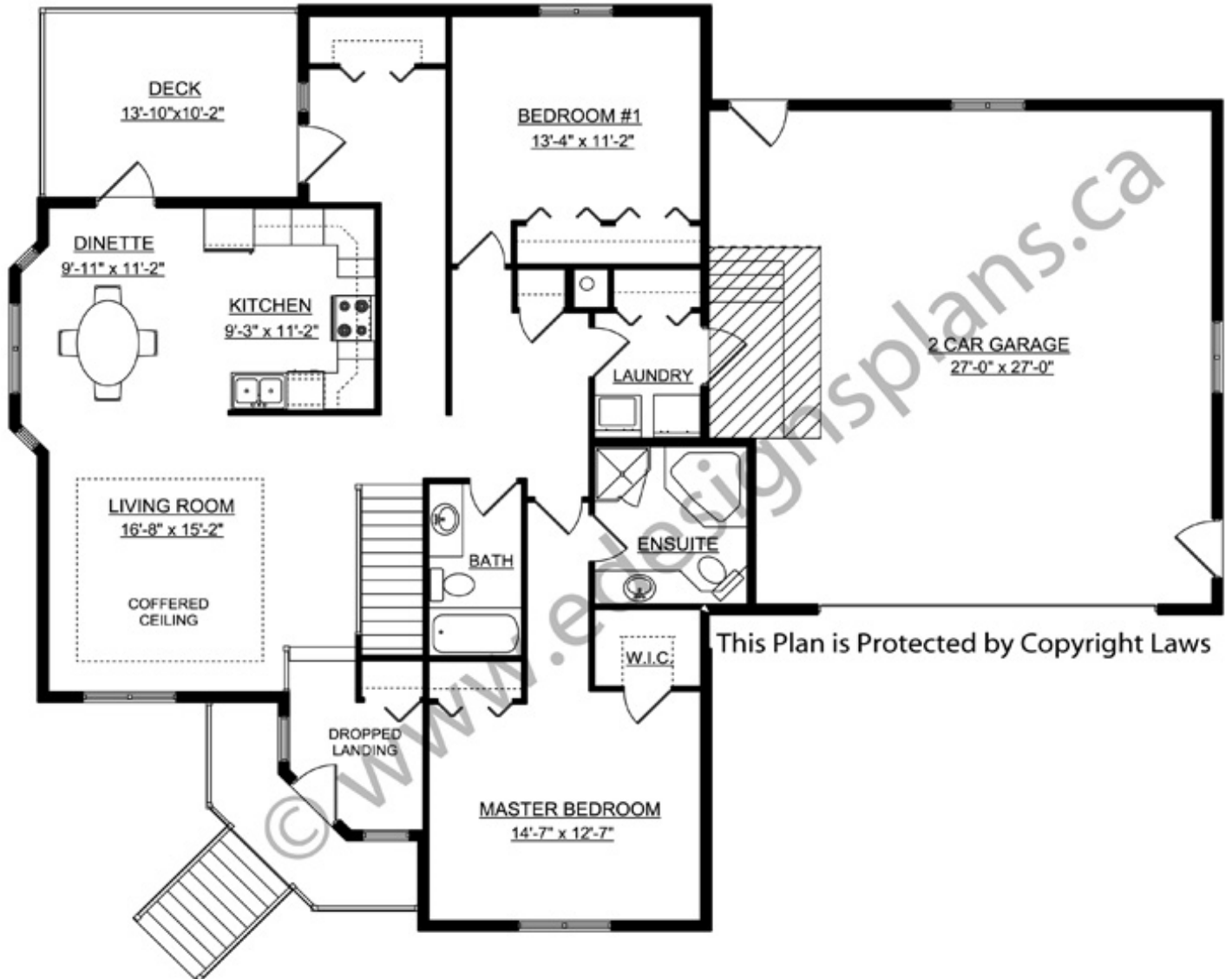
For more information about this plan contact the designer at: info@edesignsplans.ca.

Plan 2006306

www.edesignsplans.ca

[Call Us 1-855-675-1800](tel:1-855-675-1800)

Main Floor



PROTECTED BY COPYRIGHT LAWS.
PROPERTY OF **E-DESIGNS PLANS INC.**