

E-Designs *Plans Inc.*

A western Canadian company from Alberta that designs and ships home plans all across Canada, the US, and Overseas.

For more information about this plan contact the designer at: info@edesignsplans.ca.

Plan #: 2008401 Front Elevation

www.edesignsplans.ca

[Call Us 1-855-675-1800](tel:1-855-675-1800)



Rear Elevation

Bi-Level with Bonus Room & 2-Car Garage
1496 Sq. Ft. Total Living Area with Bonus Room

| | |
|-------------------------|--------------------|
| Width: | 39'-8" |
| Depth: | 56'-0" (plus deck) |
| Bedrooms: | 3 |
| Bathrooms: | 2 |
| Main Floor Laundry: | No |
| Walk-in Pantry: | Yes |
| Office/Den: | No |
| Finished Basement Plan: | No |

Plan #: 2008401

| | |
|-------------------|--|
| Exterior Walls: | 2x6 x 9 Ft. (Main Floor) 2x6 x 8 Ft. (Bonus Room) |
| Foundation: | 5' 2x6 Pony Wall on 4' Concrete (Other Foundations Available) |
| Special Ceilings: | Vaulted Front to Back |
| Fireplace: | Yes |
| Deck(s): | Rear |
| Veranda: | No |
| Attached Garage: | Yes (2-Car with 18'x8' Door) |

Modified Bi-Level Plan: This is one of our most popular home plans. It's a great floor plan and it will fit most 50 foot lots. This plan has great curb appeal with multiple roof lines plus wide corner and window trims. The front entry has a window above the door to brighten this area. Access to the 2-car garage or down to the lower level is also available from the front foyer. Up the stairs, and you now can feel the openness of this house plan. The vaulted ceiling over the great room, kitchen and nook really add to these rooms. The kitchen features an L-shaped island, a corner pantry, and lots of cabinet space. The large island has a dishwasher, double sink, and lunch counter. Access to the rear deck via the double garden doors. There are two large bedrooms and a 3-piece bath on this level. Up to the master bedroom, which features a large walk-in closet and a 3-piece ensuite. The basement level is undeveloped leaving all the design possibilities to you. A great house plan to call home.

PROTECTED BY COPYRIGHT LAWS.
PROPERTY OF ***E-DESIGNS PLANS INC.***

E-Designs Plans Inc.

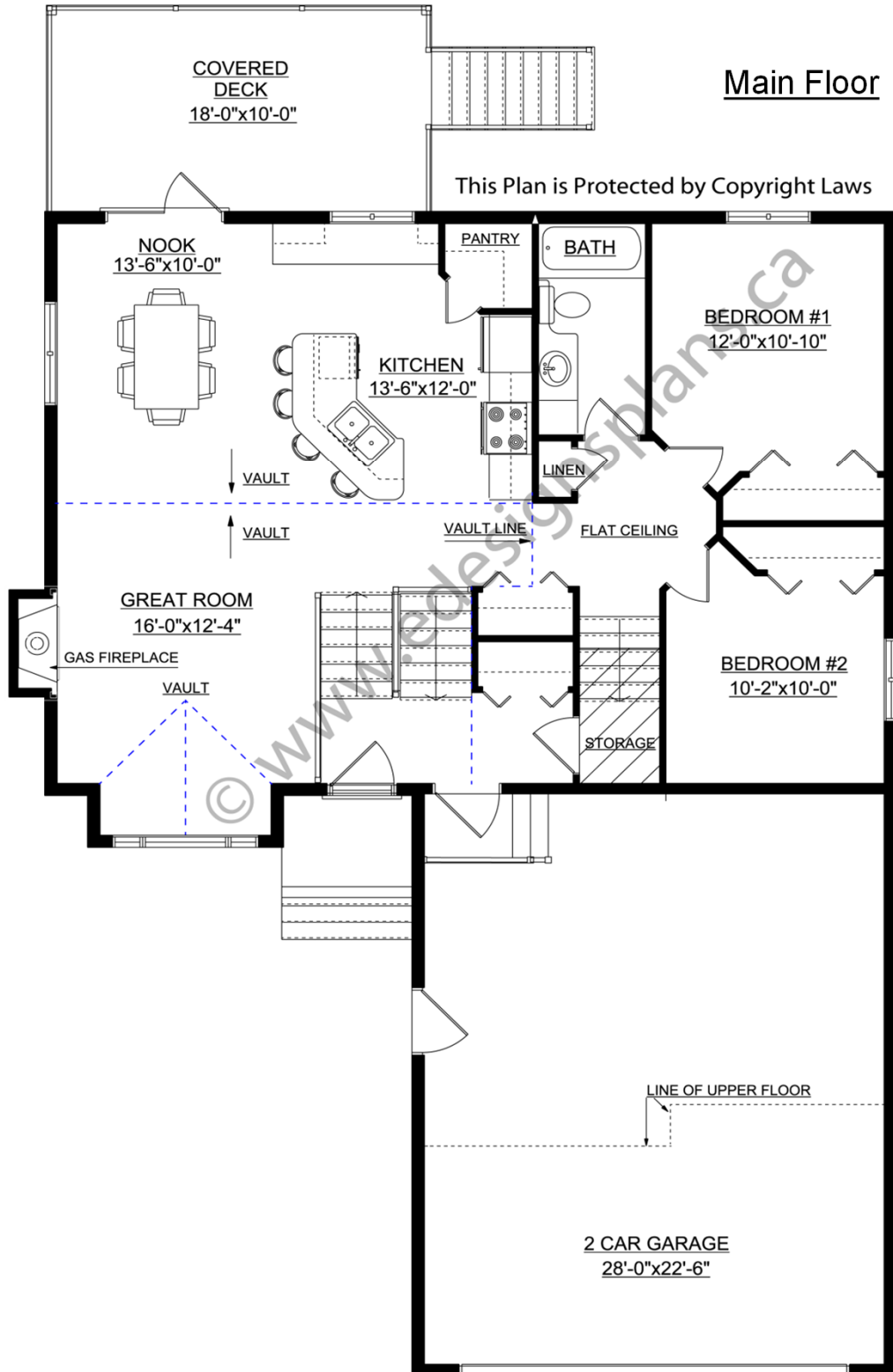
A western Canadian company from Alberta that designs and ships home plans all across Canada, the US, and Overseas.

For more information about this plan contact the designer at: info@edesignsplans.ca.

Plan 2008401

www.edesignsplans.ca

[Call Us 1-855-675-1800](tel:1-855-675-1800)



PROTECTED BY COPYRIGHT LAWS.
PROPERTY OF **E-DESIGNS PLANS INC.**

E-Designs Plans Inc.

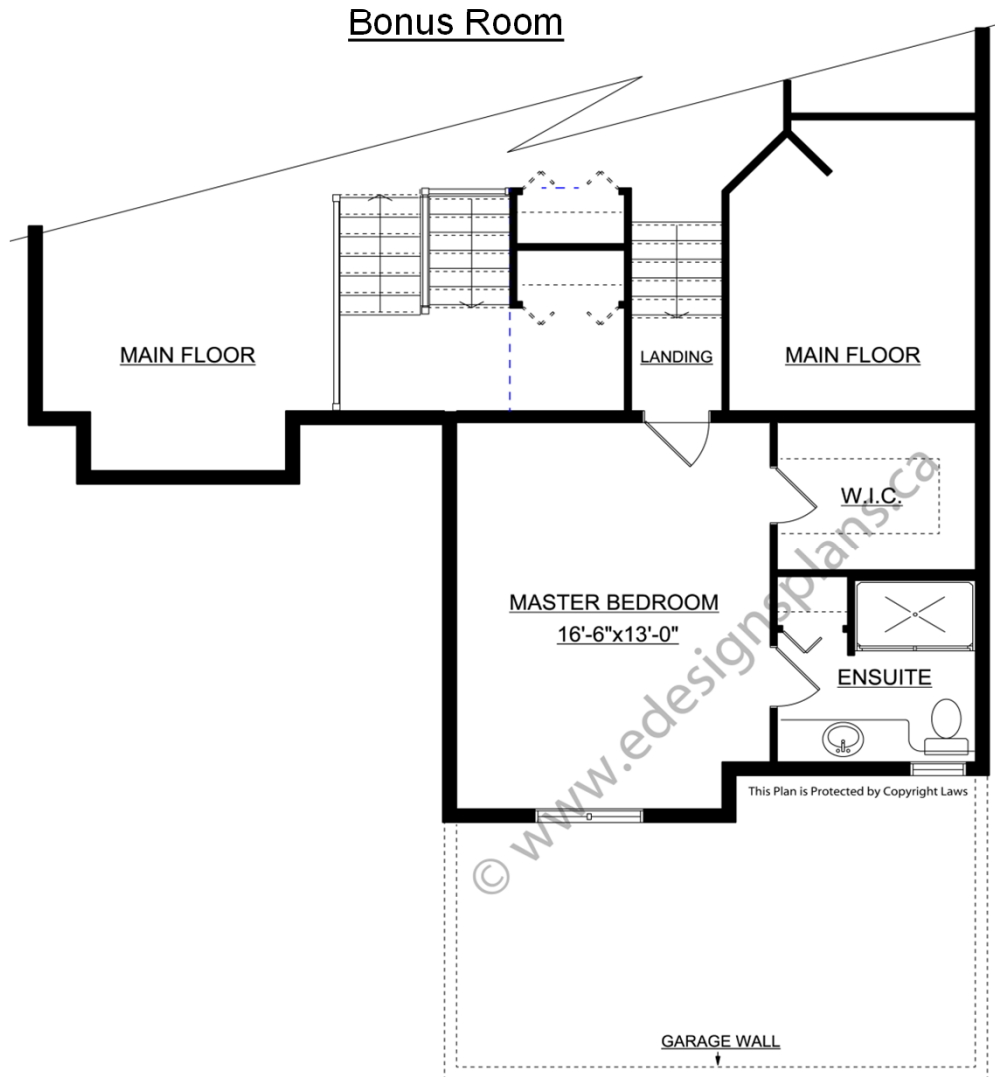
A western Canadian company from Alberta that designs and ships home plans all across Canada, the US, and Overseas.

For more information about this plan contact the designer at: info@edesignsplans.ca.

Plan 2008401

www.edesignsplans.ca

[Call Us 1-855-675-1800](tel:1-855-675-1800)



PROTECTED BY COPYRIGHT LAWS.
PROPERTY OF **E-DESIGNS PLANS INC.**