

E-Designs Plans Inc.

A western Canadian company from Alberta that designs and ships home plans all across Canada, the US, and Overseas.

For more information about this plan contact the designer at: info@edesignsplans.ca.

Plan #: 2009100 Front Elevation

www.edesignsplans.ca

Call Us 1-855-675-1800



Rear Elevation

Bi-Level Plan - No Garage

1195 Sq. Ft. Total Living Area

Width: 30'-0"
Depth: 46'-6"
Bedrooms: 3
Bathrooms: 3
Laundry: Lower Level
Walk-in Pantry: No
Office/Den: No

Plan #: 2009100

Exterior Walls: 2x6 x 8 Ft. (Main Floor)
Foundation: 4'-2" 2x6 Pony Wall on 4' Concrete (Other Foundations Available)
Special Ceilings: None
Fireplace: No
Deck(s): Rear (Covered)
Veranda: Yes
Attached Garage: No
Finished Basement Plan: Yes

1195 Sq. Ft. Bi-Level: A perfect size Bi-Level. Great for those narrow lots. It has great curb appeal yet is a very basic design to build. From the covered front veranda, enter into a large split front entry. From here you can go down to the lower level or up to the main living area. A nice size living room leads into the U-shaped kitchen with an island. The nook area overlooks the rear covered deck. A 3-piece bathroom is right beside the dinette area. A good size second bedroom and a master bedroom with its own 3-piece bath and walk-in closet are on the main level. The games/family room in the lower level has all the room for that big screen TV. The lower level also has a large 3-piece bath as well as an oversized guest bedroom with a walk-in closet. You will never lack storage space with the size of this storage area. An overall great plan with a super curb appeal to go with it.

PROTECTED BY COPYRIGHT LAWS.
PROPERTY OF **E-DESIGNS PLANS INC.**

E-Designs Plans Inc.

A western Canadian company from Alberta that designs and ships home plans all across Canada, the US, and Overseas.

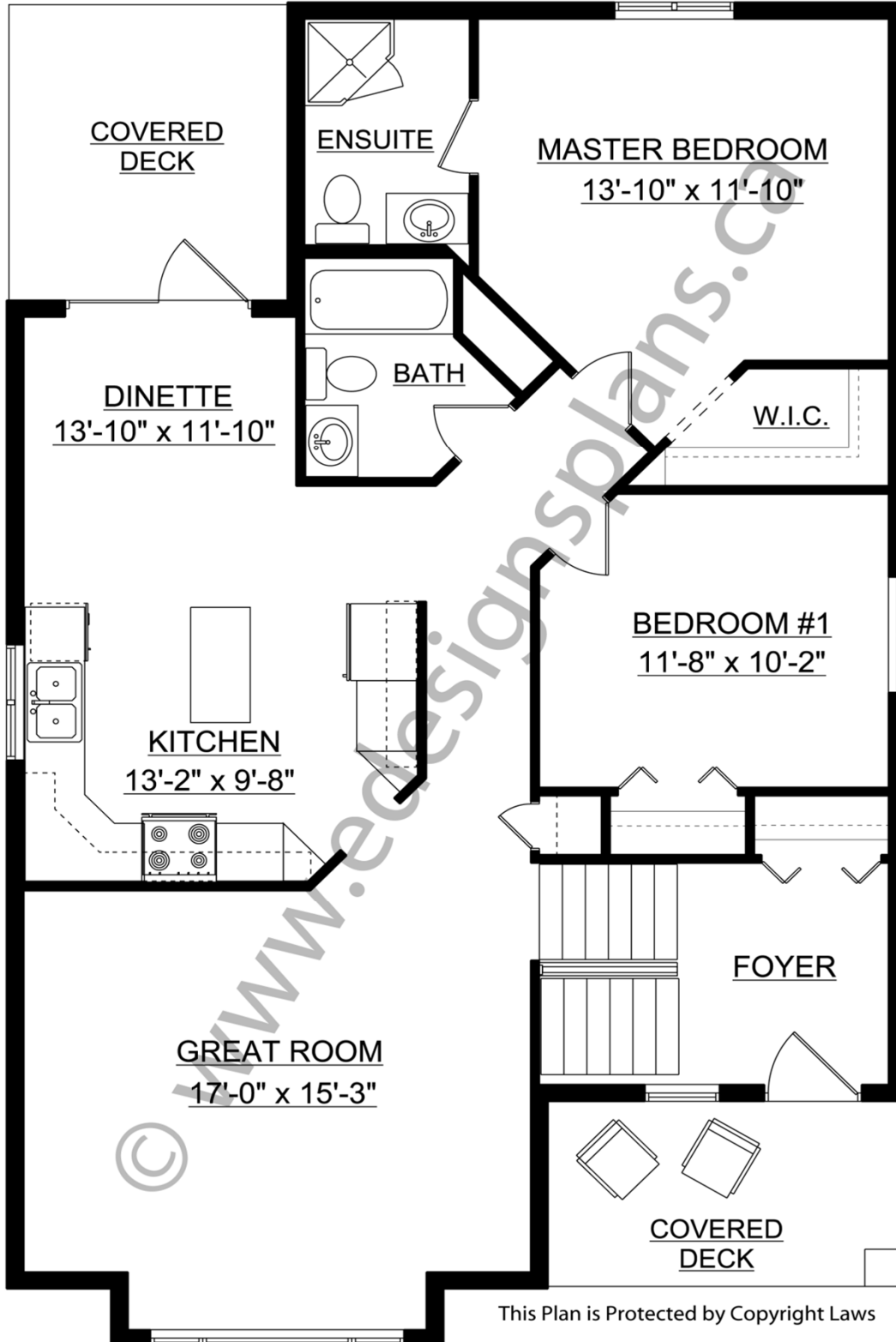
For more information about this plan contact the designer at: info@edesignsplans.ca.

Plan 2009100

www.edesignsplans.ca

[Call Us 1-855-675-1800](tel:1-855-675-1800)

Main Floor



This Plan is Protected by Copyright Laws

PROTECTED BY COPYRIGHT LAWS.
PROPERTY OF **E-DESIGNS PLANS INC.**

E-Designs Plans Inc.

A western Canadian company from Alberta that designs and ships home plans all across Canada, the US, and Overseas.

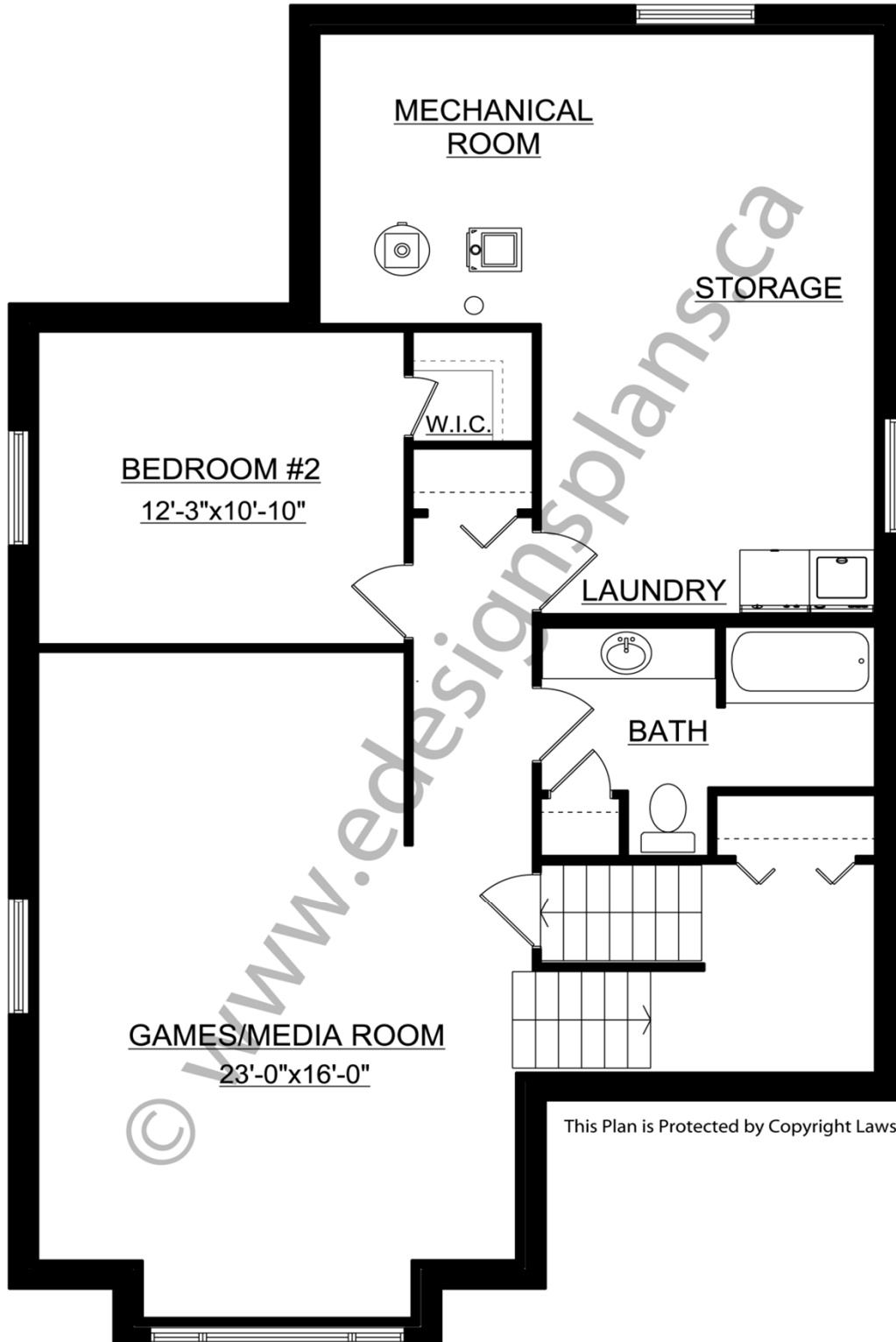
For more information about this plan contact the designer at: info@edesignsplans.ca.

Plan 2009100

www.edesignsplans.ca

[Call Us 1-855-675-1800](tel:1-855-675-1800)

Basement



This Plan is Protected by Copyright Laws

PROTECTED BY COPYRIGHT LAWS.
PROPERTY OF **E-DESIGNS PLANS INC.**