

E-Designs Plans Inc.

A western Canadian company from Alberta that designs and ships home plans all across Canada, the US, and Overseas.

For more information about this plan contact the designer at: info@edesignsplans.ca.

Plan #: 2009442 Front Elevation

www.edesignsplans.ca

Call Us 1-855-675-1800



Rear Elevation



Split Entry Bi-Level with 2-Car Garage

1585 Sq. Ft. Main Floor

1510 Sq. Ft. Basement

3095 Sq. Ft. Total Living Area

Width: 44'-0" (incl. garage)
 Depth: 62'-0"
 Bedrooms: 5
 Bathrooms: 3
 Laundry: Lower Floor
 Walk-in Pantry: Yes
 Flex Room/Office: Yes

Plan #: 2009442

Exterior Walls: 2x6 x 8 Ft. (Main Floor)
 Foundation: 4' 2x6 Pony Wall on 4' ICF Wall (Other Foundations Available)
 Special Ceilings: None
 Fireplace: Yes
 Deck(s): Side
 Veranda: No
 Attached Garage: Yes (2-Car with 16'x7' Door)
 Finished Basement Plan: Yes

1585 Sq. Ft. Split Entry Bi-Level with Attached 2-Car Garage: A very nice open plan. It includes an L-shaped kitchen with island, walk-in pantry, and access via double garden doors to deck. An open dining room/living room area with large bay window and a fireplace. A nice master bedroom with a 3-piece ensuite and large walk-in closet, plus two additional bedrooms. The lower level is totally finished and is 1510 sq. ft. including the oversized recreation room. The craft room is very bright with all the natural light from the windows in the bay. The basement features two large bedrooms and a 3-piece bath, a huge laundry room with cabinets, and a cold room for storage.

PROTECTED BY COPYRIGHT LAWS.
 PROPERTY OF **E-DESIGNS PLANS INC.**

E-Designs Plans Inc.

A western Canadian company from Alberta that designs and ships home plans all across Canada, the US, and Overseas.

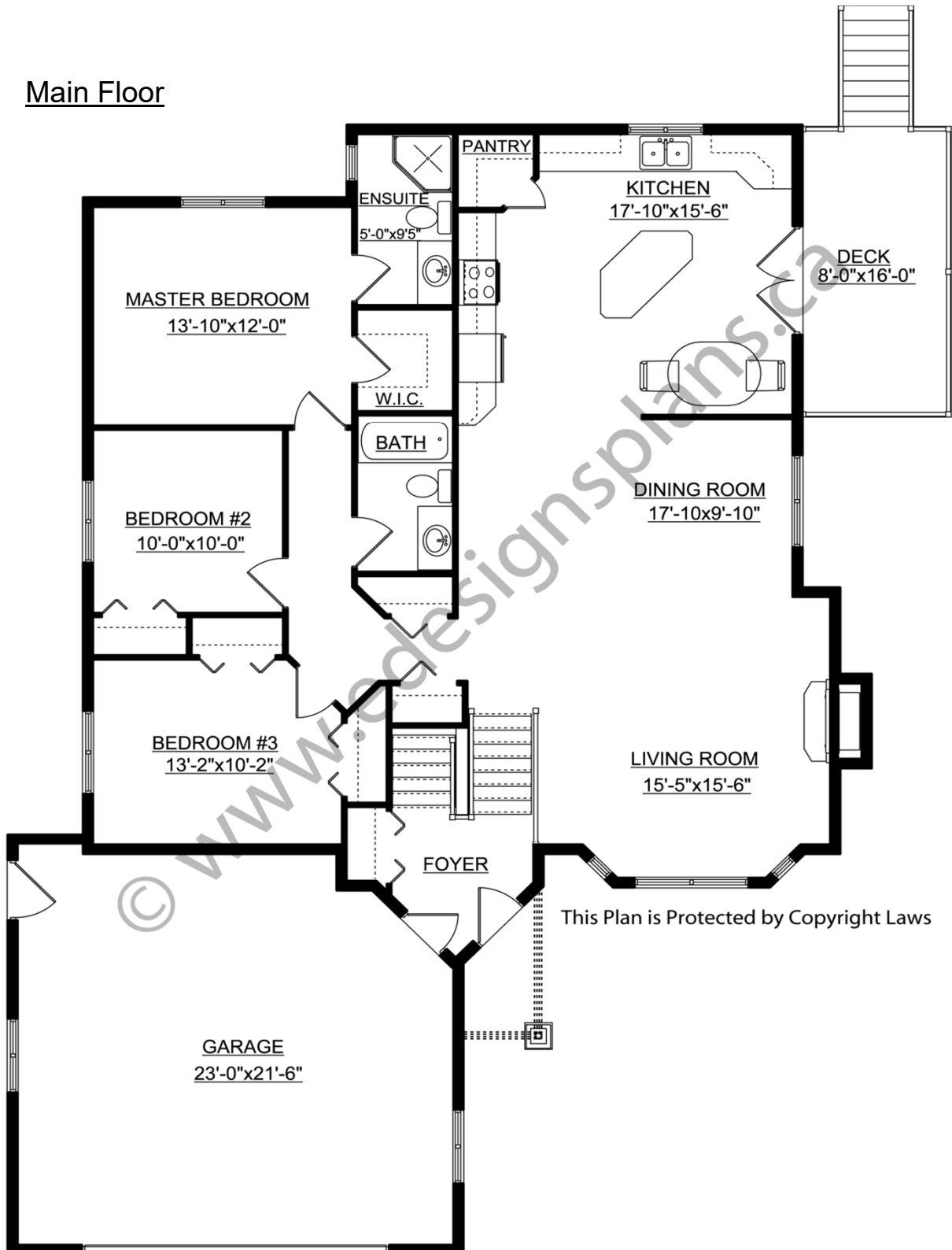
For more information about this plan contact the designer at: info@edesignsplans.ca.

Plan 2009442

www.edesignsplans.ca

Call Us 1-855-675-1800

Main Floor



This Plan is Protected by Copyright Laws

PROTECTED BY COPYRIGHT LAWS.
PROPERTY OF **E-DESIGNS PLANS INC.**

E-Designs Plans Inc.

A western Canadian company from Alberta that designs and ships home plans all across Canada, the US, and Overseas.

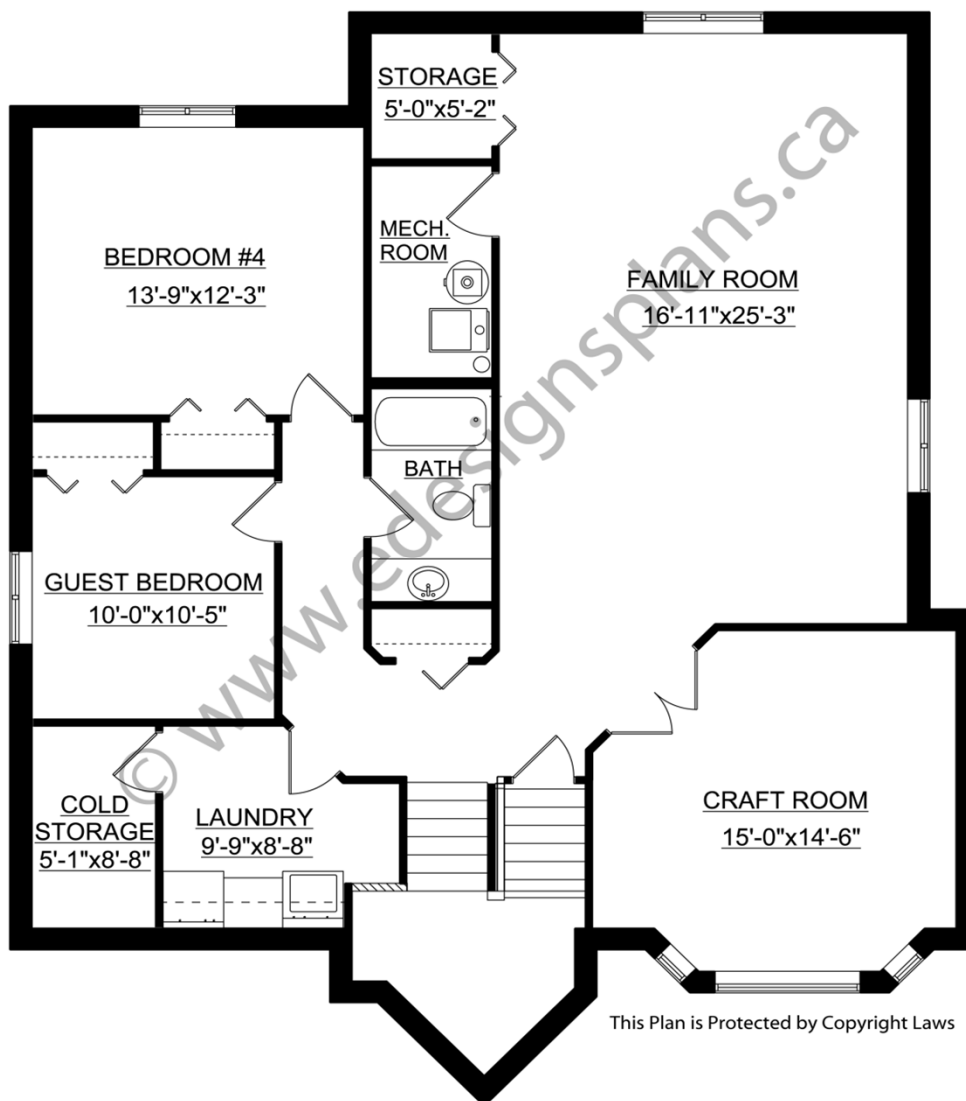
For more information about this plan contact the designer at: info@edesignsplans.ca.

Plan 2009442

www.edesignsplans.ca

[Call Us 1-855-675-1800](tel:1-855-675-1800)

Basement



This Plan is Protected by Copyright Laws

PROTECTED BY COPYRIGHT LAWS.
PROPERTY OF **E-DESIGNS PLANS INC.**