

E-Designs Plans Inc.

A western Canadian company from Alberta that designs and ships home plans all across Canada, the US, and Overseas.

For more information about this plan contact the designer at: info@edesignsplans.ca.

Plan #: 2009445 Front Elevation

www.edesignsplans.ca

[Call Us 1-855-675-1800](tel:1-855-675-1800)



Rear Elevation



Bi-Level with Bonus Room & 2-Car Garage

1614 Sq. Ft. Total Living Area

Width: 31'-6"
 Depth: 64'-0"
 Bedrooms: 2
 Bathrooms: 2
 Main Floor Laundry: Yes
 Walk-in Pantry: No
 Office/Den: No

Plan #: 2009445

Exterior Walls: 2x6 x 9 Ft. (Main Floor & Bonus)
 Foundation: 9' ICF (Insulated Concrete Form) (Other Foundations Available)
 Special Ceilings: Vaulted Main Floor & Master
 Fireplace: Yes
 Deck(s): Rear
 Veranda: No
 Attached Garage: Yes (2-Car with 16'x7' Door)
 Finished Basement Plan: No

Bi-Level with Bonus Room & 2-Car Garage. This stylish home will be the talk of your street. The attention to detail with the large corners and window surrounds, along with the stone work, will make it stand out. The uniquely angled wall over the garage is where the corner jet tub is. The large front foyer with its high ceiling has stairs leading to the lower level and to the upper level, plus access to the garage. Once you're in the main floor area, you can really appreciate the openness of this plan. The 9 foot walls combined with the vaulted ceiling give this home the feel of a much larger home. No shortage of space in this large U-shaped kitchen with working island and lunch counter. The great room has a fireplace. Step out through double garden doors onto a large deck overlooking the back yard. The guest room is also spacious. The main floor laundry room is large enough to have a sewing area. The stairs leading to the master bedroom are open with railings. This room is very open with a dressing area and walk-in closet. It also has a vaulted ceiling. The uniquely placed corner tub in combination with corner shower makes this ensuite one of a kind. The lower level is undeveloped for you to plan out the way you would like. Overall, a great floor plan.

E-Designs Plans Inc.

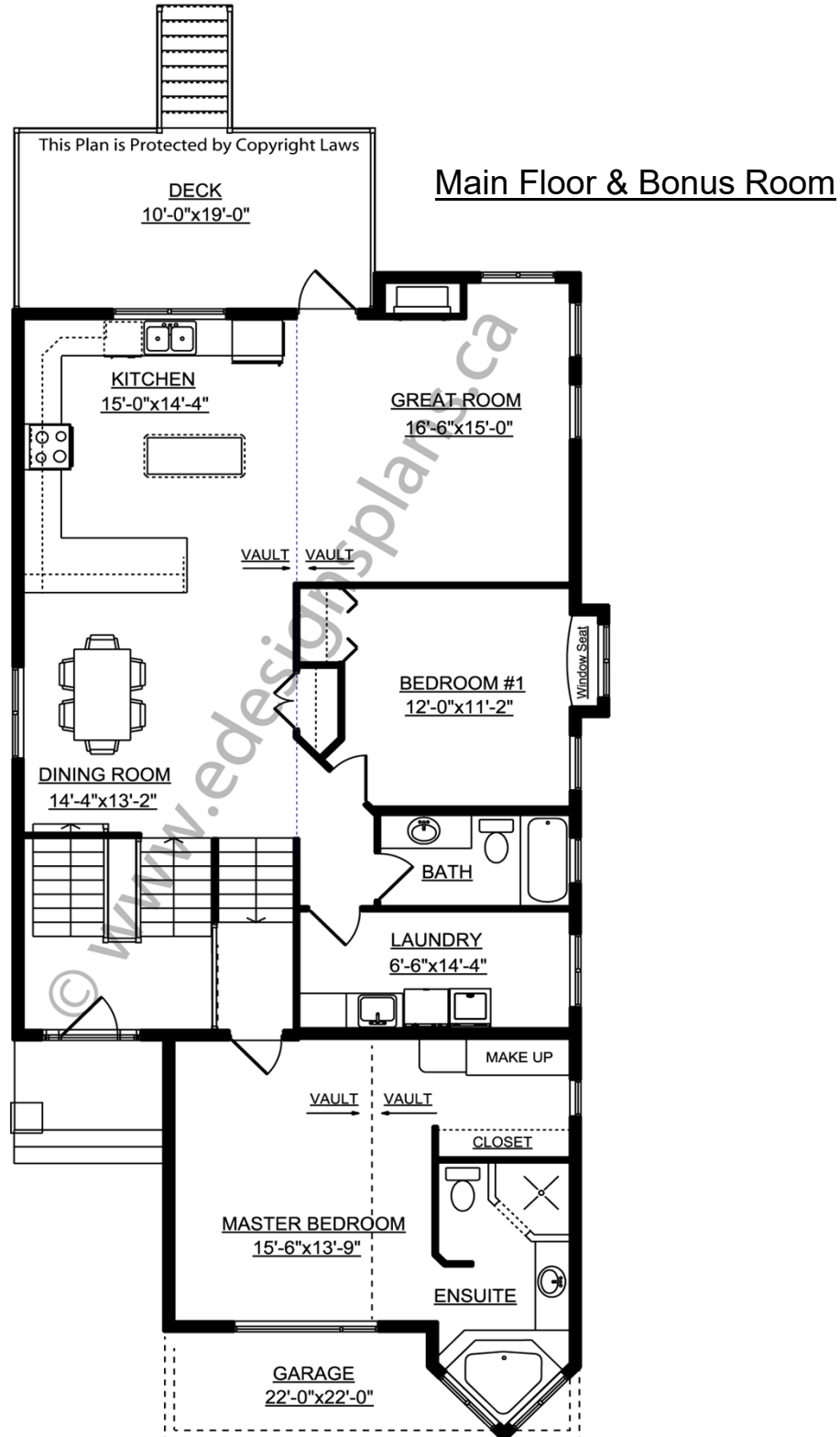
A western Canadian company from Alberta that designs and ships home plans all across Canada, the US, and Overseas.

For more information about this plan contact the designer at: info@edesignsplans.ca.

Plan 2009445

www.edesignsplans.ca

Call Us 1-855-675-1800



PROTECTED BY COPYRIGHT LAWS.
PROPERTY OF **E-DESIGNS PLANS INC.**