

E-Designs *Plans Inc.*

A western Canadian company from Alberta that designs and ships home plans all across Canada, the US, and Overseas.

For more information about this plan contact the designer at: info@edesignsplans.ca.

Plan #: 2009457 Front Elevation

www.edesignsplans.ca

[Call Us 1-855-675-1800](tel:1-855-675-1800)



Rear Elevation



Bi-Level with 2-Car Attached Garage
1790 Sq. Ft. Main Floor

Plan #: 2009457

Width: 90'-0"
Depth: 40'-0"
Bedrooms: 3
Bathrooms: 2
Main Floor Laundry: Yes
Walk-in Pantry: Yes
Office/Den: No
Finished Basement Plan: No

Exterior Walls: 2x6 x 8 Ft. (Main Floor)
Foundation: 4'-6" 2x6 Pony Wall on 4' ICF (Insulated Concrete Form) (Other Foundations Available)
Special Ceilings: Vaulted Kitchen Dining & Great Rm
Fireplace: Yes
Deck(s): Front & Side (Partially Covered)
Veranda: No
Attached Garage: Yes (2-Car with 10'x8' Doors)

1790 Sq. Ft. Bi-Level: This uniquely planned home would look great in town or on the farm. The view of the outdoors is superb with the placement of the windows and double garden doors. The large dropped front foyer has two closets and access to the garage and lower level. The large "U" shaped kitchen has a walk-in pantry and lunch bar island. Note the vaulted ceilings in the kitchen, dining room, and great room. The 2-sided fireplace with rounded walls partially separates the two rooms. The three bedrooms are a nice size with the master having a walk-in closet plus two separate closets. Also, there is a 3-piece ensuite for the master bedroom. The main floor laundry room has a laundry tub and plenty of counter space. The oversized garage has two 10'x8' overhead doors plus a walk-in door. The basement is undeveloped but features large windows and a mechanical room.

E-Designs Plans Inc.

A western Canadian company from Alberta that designs and ships home plans all across Canada, the US, and Overseas.

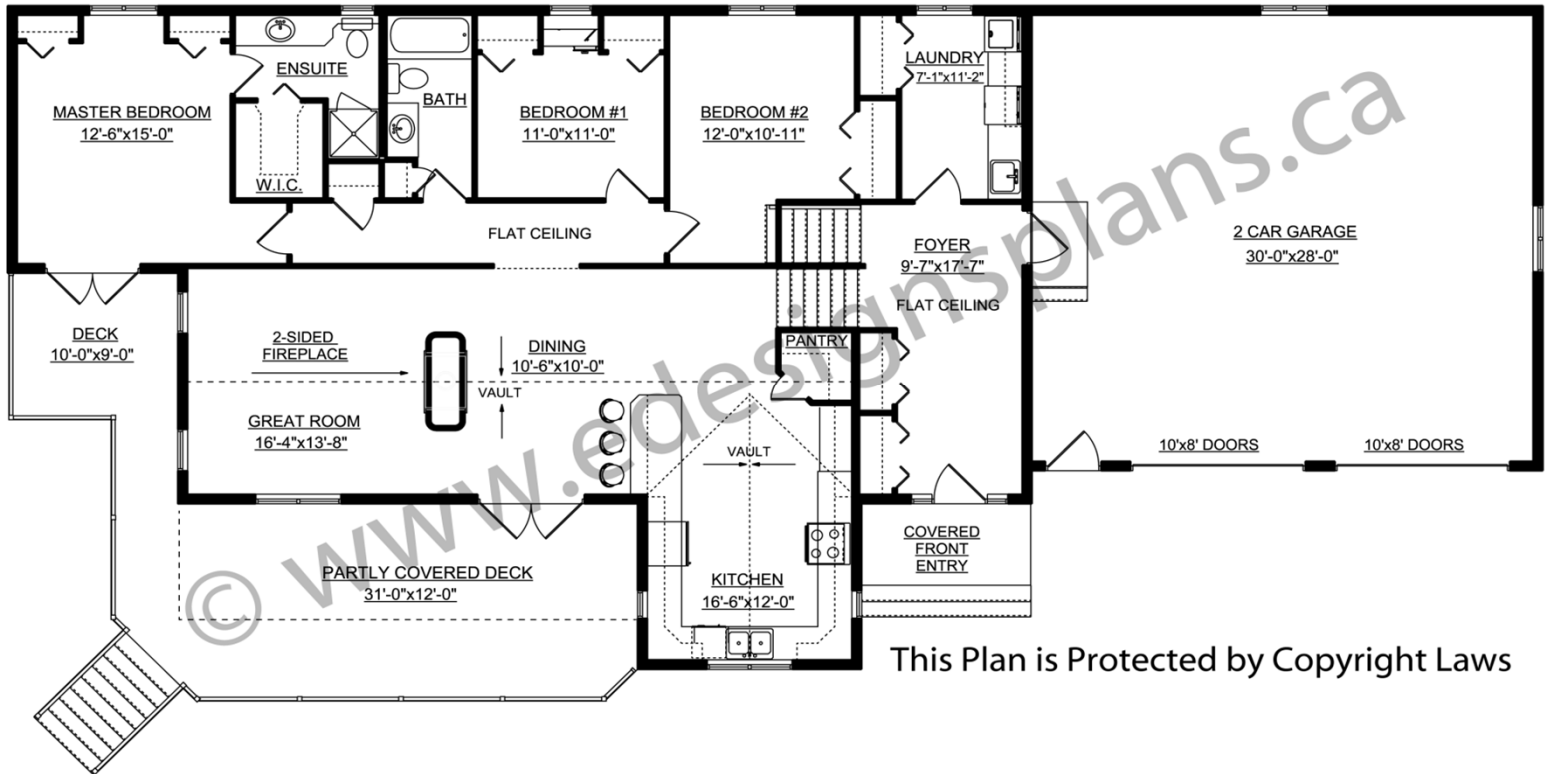
For more information about this plan contact the designer at: info@edesignsplans.ca.

Plan 2009457

www.edesignsplans.ca

Call Us 1-855-675-1800

Main Floor



This Plan is Protected by Copyright Laws