

E-Designs Plans Inc.

A western Canadian company from Alberta that designs and ships home plans all across Canada, the US, and Overseas.

For more information about this plan contact the designer at: info@edesignsplans.ca.

Plan #: 2009463 Front Elevation

www.edesignsplans.ca

Call Us 1-855-675-1800



Rear Elevation



Ranch Style Bi-Level with 2-Car Garage

1344 Sq. Ft. Main Floor

1344 Sq. Ft. Basement

2688 Sq. Ft. Total Living Area

Width: 70'-0"
 Depth: 32'-0" (plus deck)
 Bedrooms: 5
 Bathrooms: 5
 Laundry: Main & Lower Floor
 Walk-in Pantry: Yes
 Office/Den Area: Yes

Plan #: 2009463

Exterior Walls: 2x6 x 8 Ft. (Main Floor)
 Foundation: 5' Pony Wall on 4' Concrete (Other Foundations Available)
 Special Ceilings: None
 Fireplace: No
 Deck(s): Rear
 Veranda: Yes (Covered)
 Attached Garage: Yes (2-Car with 9'x8' Doors)
 Finished Basement Plan: Yes

Ranch Style Bi-Level with 2-Car Garage: This is a perfect plan for a family needing lots of bedrooms and space. Two bedrooms on the main floor and three on the lower floor. The covered veranda is the perfect place to relax and enjoy the outdoors. The foyer is dropped to keep the front veranda low. The large "U" shaped kitchen has a walk-in pantry and note the built-in lunch bar. There is phone/computer desk off the kitchen and living room. The open living room and nook lead onto a large rear deck. The master bedroom has a 3-piece bath plus there is also another 3-piece bath for your guest. Access to the attached garage from the kitchen will lead you into a large mudroom with its own 2-piece bath. (Perfect when your outside.. no need to run into the house.) The garage has an area perfect for a workshop. When you enter the basement you are in the large "L" shaped family room. All three bedrooms are the same size. The mechanical room has space for a washer and dryer. This plan has separate bathrooms for the boys and the girls on this level. All the windows are 30" high so you can get as much natural lighting as possible. This is perfect plan for that larger family or for someone needing lots of room.

E-Designs Plans Inc.

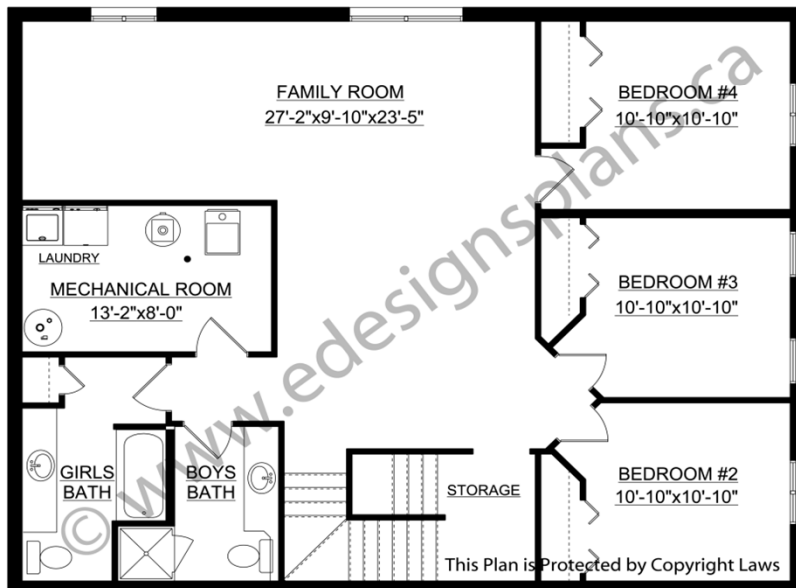
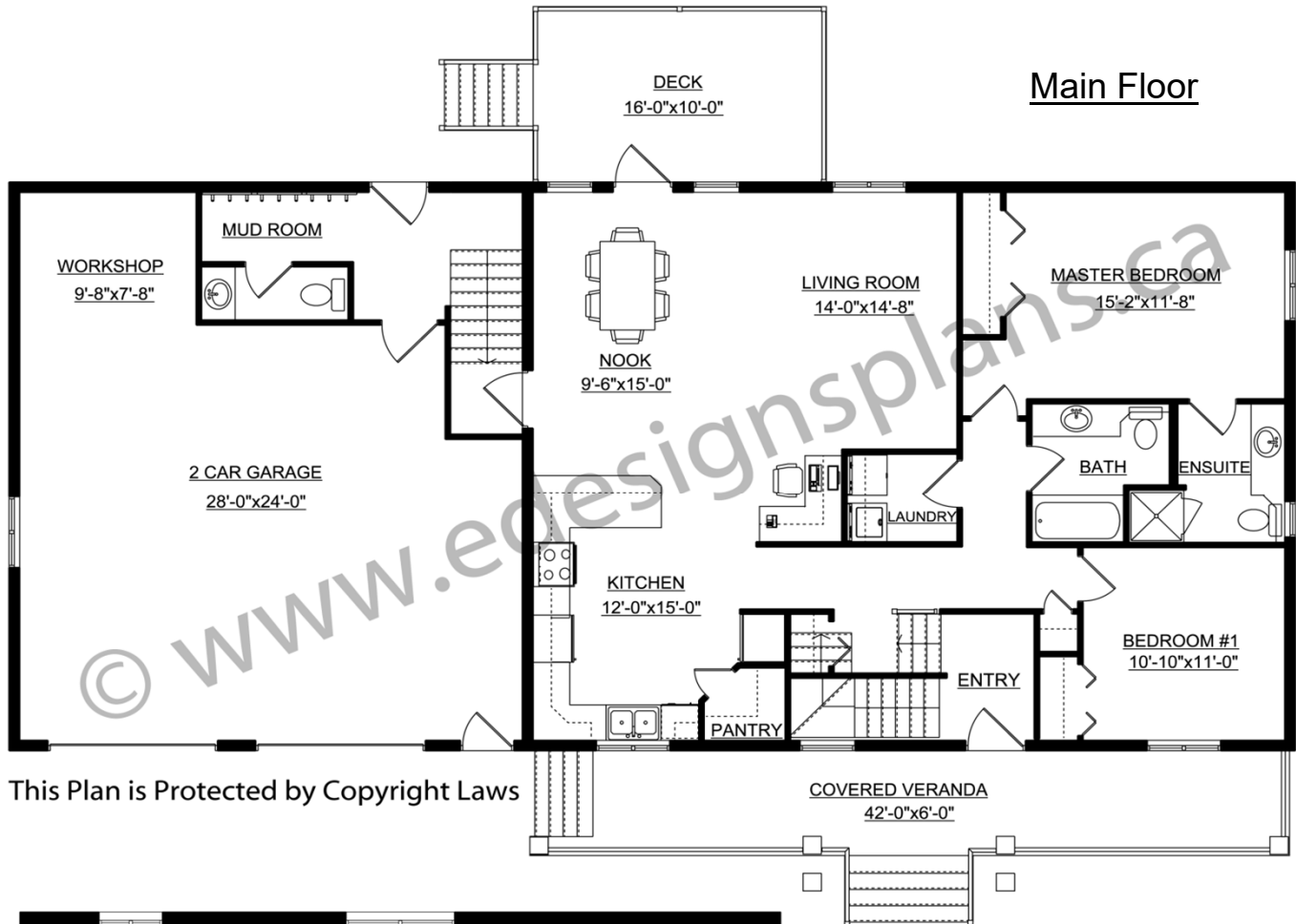
A western Canadian company from Alberta that designs and ships home plans all across Canada, the US, and Overseas.

For more information about this plan contact the designer at: info@edesignsplans.ca.

Plan 2009463

www.edesignsplans.ca

Call Us 1-855-675-1800



PROTECTED BY COPYRIGHT LAWS.
PROPERTY OF **E-DESIGNS PLANS INC.**