

# E-Designs

## Plans Inc.

A western Canadian company from Alberta that designs and ships home plans all across Canada, the US, and Overseas.

For more information about this plan contact the designer at: [info@edesignsplans.ca](mailto:info@edesignsplans.ca).

**Plan #: 2010506 Front Elevation**

[www.edesignsplans.ca](http://www.edesignsplans.ca)

**Call Us 1-855-675-1800**



**Rear Elevation**

### **Bi-Level with Bonus Room**

2006 Sq. Ft. Main Floor

1241 Sq. Ft. Basement

3307 Sq. Ft. Total Living Area

Width: 44'-6"  
Depth: 78'-0" (incl. deck)  
Bedrooms: 5  
Bathrooms: 3  
Main Floor Laundry: Yes  
Walk-in Pantry: No  
Office/Den: No

### **Plan #: 2010506**

Exterior Walls: 2x6 x 9 Ft. (Main & Second Floor)  
Foundation: 5' 2x6 Pony Wall on 4' Concrete (Other Foundations Available)  
Special Ceilings: Coffered Great Room  
Vaulted Master Bedroom  
Fireplace: Yes  
Deck(s): Rear (Partially Covered)  
Veranda: No  
Attached Garage: Yes (2-Car with 10'x8' Doors)  
Finished Basement Plan: Yes

**3307 Sq. Ft. of Luxury Living in the Superbly Designed Home Plan.** The multi roof lines, gables, and the windows and doors give this home great curb appeal. Enter the dropped front foyer and you will immediately feel the open design. The ceiling over the foyer runs up to the ceiling of the bonus room. Up the stairs to the main level, the great room, kitchen, and nook area are all open to each other. The great room features a coffered ceiling, fireplace and partial wall between the columns separating the hallway from the open areas. The country style kitchen has lots of counter and cabinet spaces. The large working island also has a lunch bar. The nook features a double garden door leading to the rear deck. Half of the deck is covered by the roof. The main bath is conveniently located between the two bedrooms which are a nice size with ample closet space. Up a few steps and you enter into a very unique master bedroom. A two sided fireplace sits between the bedroom area and the free standing tub with built-in shelving above. The ensuite also has a custom shower with glass blocks and a large window in the centre of the room. The ensuite and part of the bedroom have a vaulted ceiling. The large walk-in closet also has a stackable washer/dryer. Leaving the master bedroom, the landing at the top of the stairs is open to below. From the dropped front entry you can access the oversized 2-car garage or go down to the developed basement. All windows in this level are large for natural lighting. Here you will find a 3-piece bath between two guest rooms, a large family/games room with a wet bar, and your own theater room which has insulated walls and ceiling.

PROTECTED BY COPYRIGHT LAWS.  
PROPERTY OF **E-DESIGNS PLANS INC.**

# E-Designs Plans Inc.

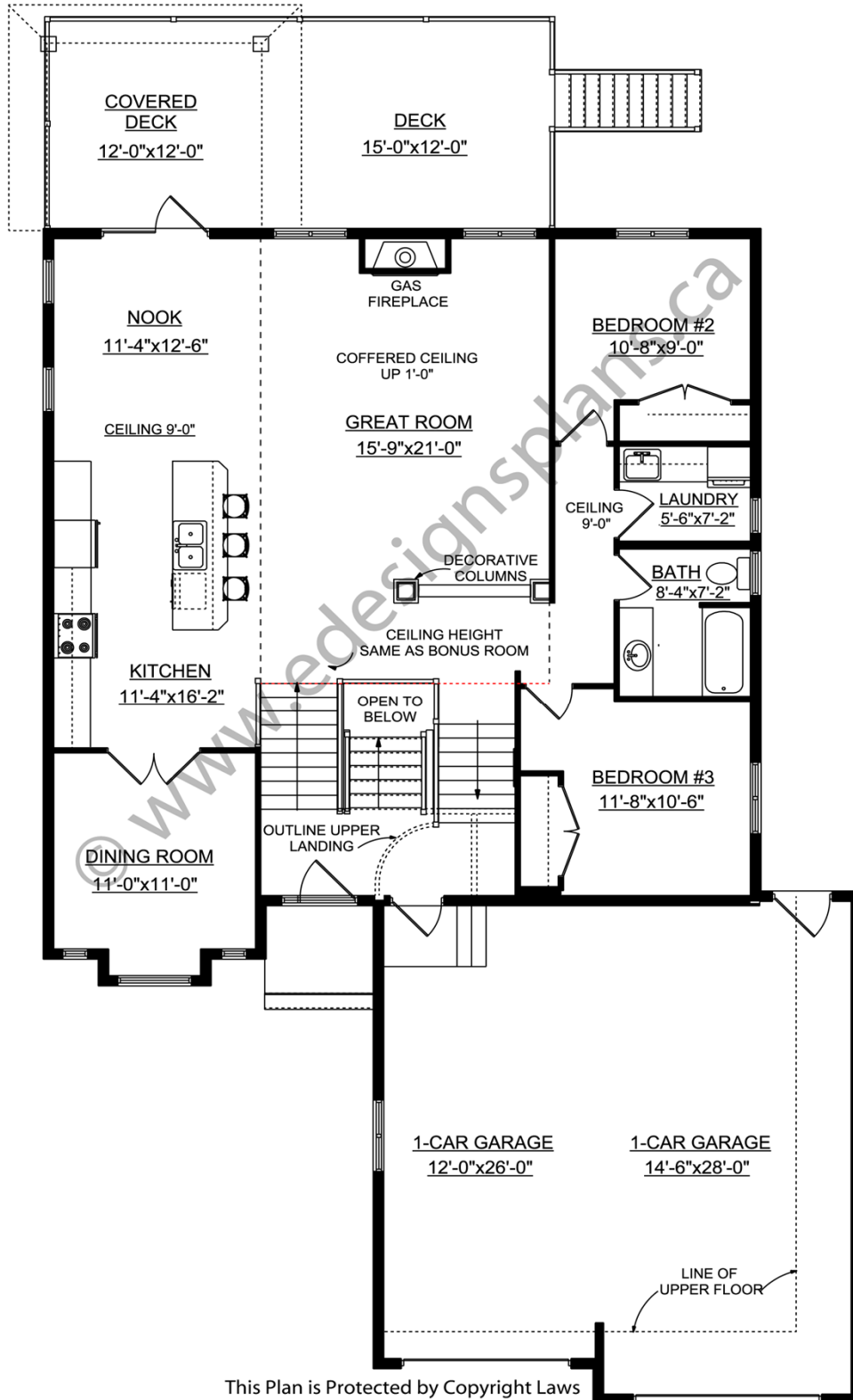
A western Canadian company from Alberta that designs and ships home plans all across Canada, the US, and Overseas.

For more information about this plan contact the designer at: [info@edesignsplans.ca](mailto:info@edesignsplans.ca).

**Plan 2010506**

[www.edesignsplans.ca](http://www.edesignsplans.ca)

**Call Us 1-855-675-1800**



Main Floor

This Plan is Protected by Copyright Laws

PROTECTED BY COPYRIGHT LAWS.  
PROPERTY OF **E-DESIGNS PLANS INC.**

# E-Designs Plans Inc.

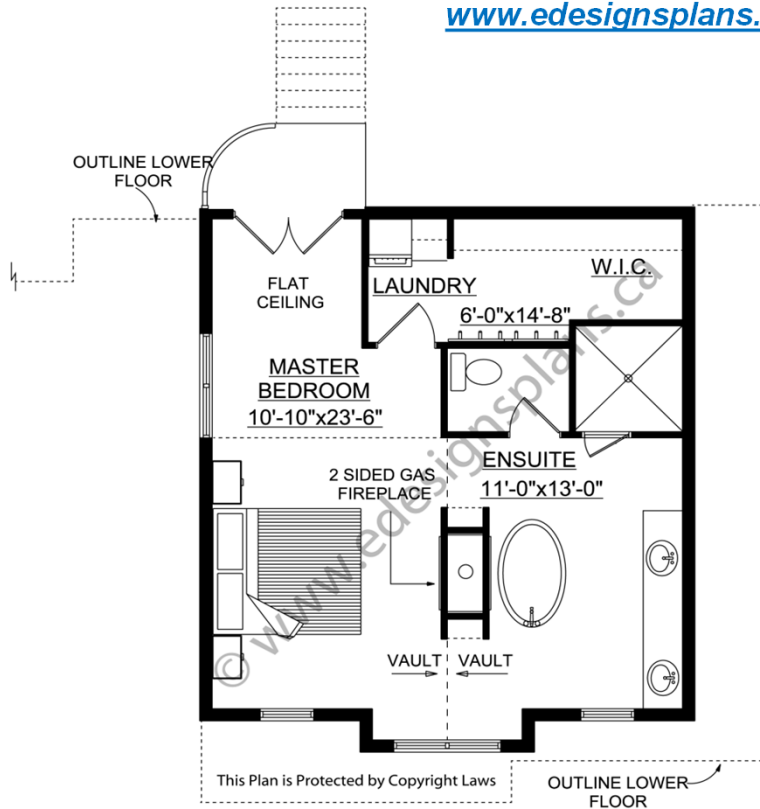
A western Canadian company from Alberta that designs and ships home plans all across Canada, the US, and Overseas.

For more information about this plan contact the designer at: [info@edesignsplans.ca](mailto:info@edesignsplans.ca).

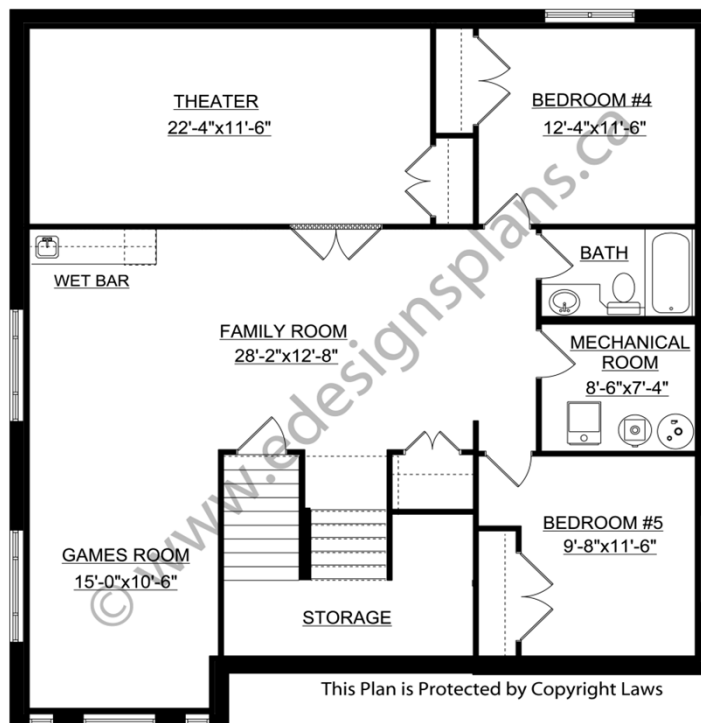
**Plan 2010506**

[www.edesignsplans.ca](http://www.edesignsplans.ca)

**Call Us 1-855-675-1800**



Second Floor



Basement

PROTECTED BY COPYRIGHT LAWS.  
PROPERTY OF **E-DESIGNS PLANS INC.**