

# E-Designs Plans Inc.

A western Canadian company from Alberta that designs and ships home plans all across Canada, the US, and Overseas.

For more information about this plan contact the designer at: [info@edesignsplans.ca](mailto:info@edesignsplans.ca).

**Plan #: 2010508 Front Elevation**

[www.edesignsplans.ca](http://www.edesignsplans.ca)

[Call Us 1-855-675-1800](tel:1-855-675-1800)



**Rear Elevation**



**Bi-Level Plan with 3-Car Garage**  
2562 Sq. Ft. Main Floor

Width: 75'-0"  
Depth: 57'-6" (plus deck)  
Bedrooms: 3  
Bathrooms: 3  
Main Floor Laundry: Yes  
Walk-in Pantry: Yes  
Office/Den: No

**Plan #: 2010508**

Exterior Walls: 2x6 x 10 Ft. (Main Floor)  
Foundation: 5' 2x6 Pony Wall on 4" Concrete (Other Foundations Available)  
Special Ceilings: No  
Fireplace: Yes  
Deck(s): Rear (Partially Covered)  
Veranda: Yes (Covered)  
Attached Garage: Yes (3-Car - 16'x8' & 10'x8' Doors)  
Finished Basement Plan: No

**This Executive Style Bi-Level Home** has been designed with space in mind. The exterior with stone, wide window and door trims, and using gables with a cottage roof, gives this home its great curb appeal. From the covered foyer, the open staircase takes you down to the lower level or up into the main floor. As you proceed up the stairs, the great room grabs your attention. The open archway with decorative columns, along with the fireplace and openness to the kitchen and nook area, make this room very inviting. The nook and great room feature large windows and a double garden door to the rear deck. The country style kitchen has a walk-in pantry, lots of counter and cabinet space, and a lunch bar. The formal dining room also has a large window and pillars with an arched opening. The master bedroom has double doors onto the rear deck. The five-piece ensuite has a 6 foot soaker tub and a 5 foot shower. The two guest bedrooms are large with ample closet space. The bedrooms share a 4-piece bath. The mudroom area off the garage features a large closet, laundry room, and a 3-piece bath with shower. Lots of room in this 3-car garage for extra storage and a work area. Large windows have been used in the lower level for natural lighting. This is an exceptionally designed home; great for the city, acreage, or farm.

PROTECTED BY COPYRIGHT LAWS.  
PROPERTY OF **E-DESIGNS PLANS INC.**

# E-Designs Plans Inc.

A western Canadian company from Alberta that designs and ships home plans all across Canada, the US, and Overseas.

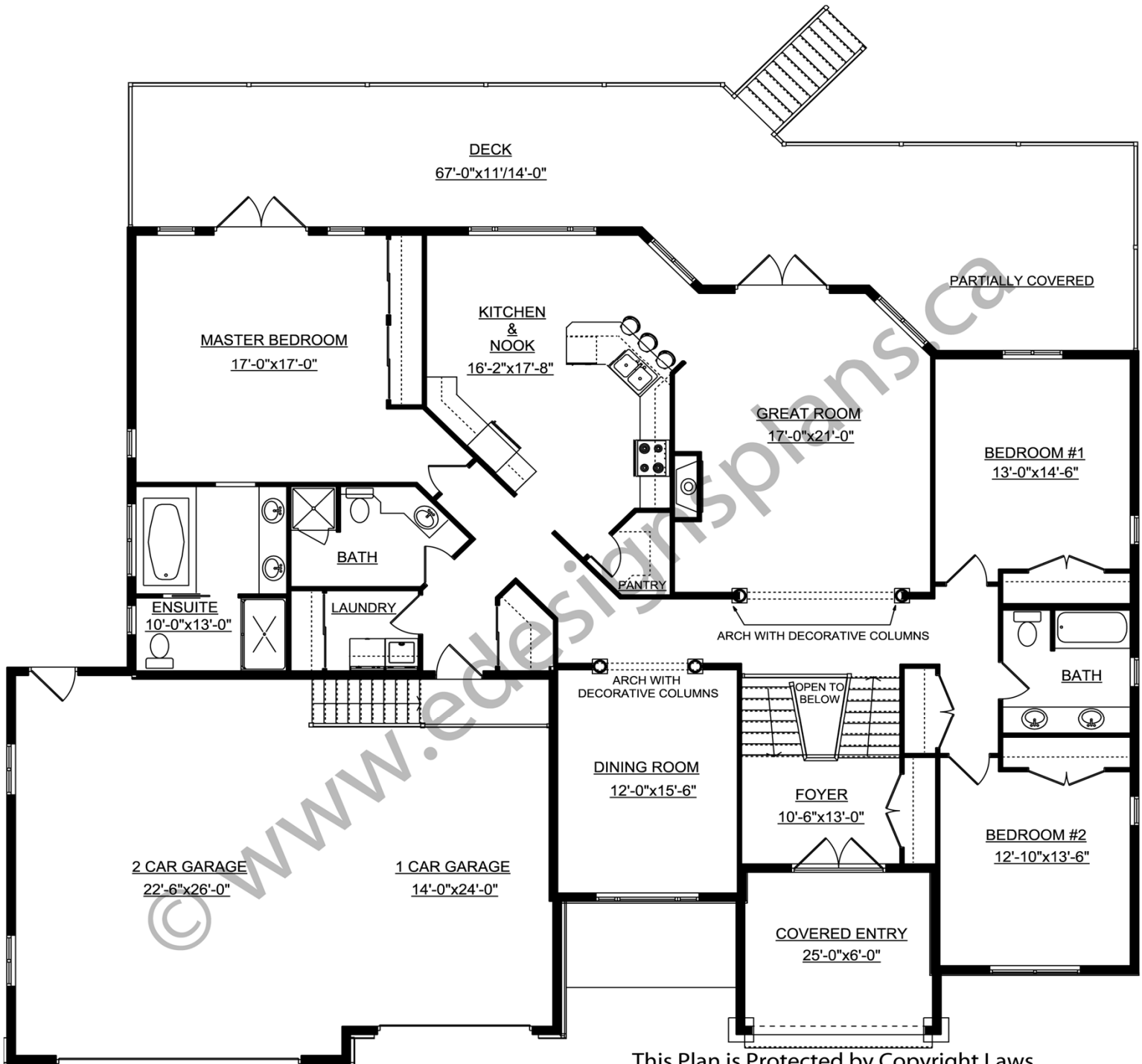
For more information about this plan contact the designer at: [info@edesignsplans.ca](mailto:info@edesignsplans.ca).

Plan 2010508

[www.edesignsplans.ca](http://www.edesignsplans.ca)

Call Us 1-855-675-1800

## Main Floor



This Plan is Protected by Copyright Laws

PROTECTED BY COPYRIGHT LAWS.  
PROPERTY OF **E-DESIGNS PLANS INC.**