

# E-Designs Plans Inc.

A western Canadian company from Alberta that designs and ships home plans all across Canada, the US, and Overseas.

For more information about this plan contact the designer at: [info@edesignsplans.ca](mailto:info@edesignsplans.ca).

**Plan #: 2010515 Front Elevation**

[www.edesignsplans.ca](http://www.edesignsplans.ca)

[Call Us 1-855-675-1800](tel:1-855-675-1800)



**Rear Elevation**



**Bi-Level with 2-Car Garage**  
**1420 Sq. Ft. Main Floor**

Width: 41'-0"  
 Depth: 60'-0" (plus deck)  
 Bedrooms: 2  
 Bathrooms: 2  
 Main Floor Laundry: Yes  
 Walk-in Pantry: No  
 Office/Den: No  
 Finished Basement Plan: No

**Plan #: 2010515**

Exterior Walls: 2x6 x 8 Ft. (Main Floor)  
 Foundation: 5' 2x6 Pony Wall on 4' ICF Wall (Insulated Concrete Form) (Other Foundations Available)  
 Special Ceilings: None  
 Fireplace: Yes  
 Deck(s): Rear  
 Veranda: No  
 Attached Garage: Yes (2-Car with 18'x8' Door)

**1420 Sq. Ft. Bi-Level Plan.** This is a nice, open floor plan. The split front entry gives access to either the attached garage, the lower floor, or up to the main floor. Upon entering the main floor, the openness of this plan is obvious. The large kitchen features a walk-in pantry and a working island with a lunch bar. A 48" high wall separates the kitchen from the living room allowing the openness to show. The nook is nice and bright with all the windows. The large rear deck is accessible from a French door in the nook. The gas fireplace in the corner can be viewed from the kitchen, nook and living room; great for those cooler days. The guest bedroom is located beside the main bathroom. The master bedroom features a walk-in closet and a 3-piece ensuite. The laundry is conveniently located on the main floor. The lower level is not developed except for the mechanical room. The lower level has three foot high windows allowing for lots of natural lighting. The oversized garage has a floor sump to keep things dry.

# E-Designs Plans Inc.

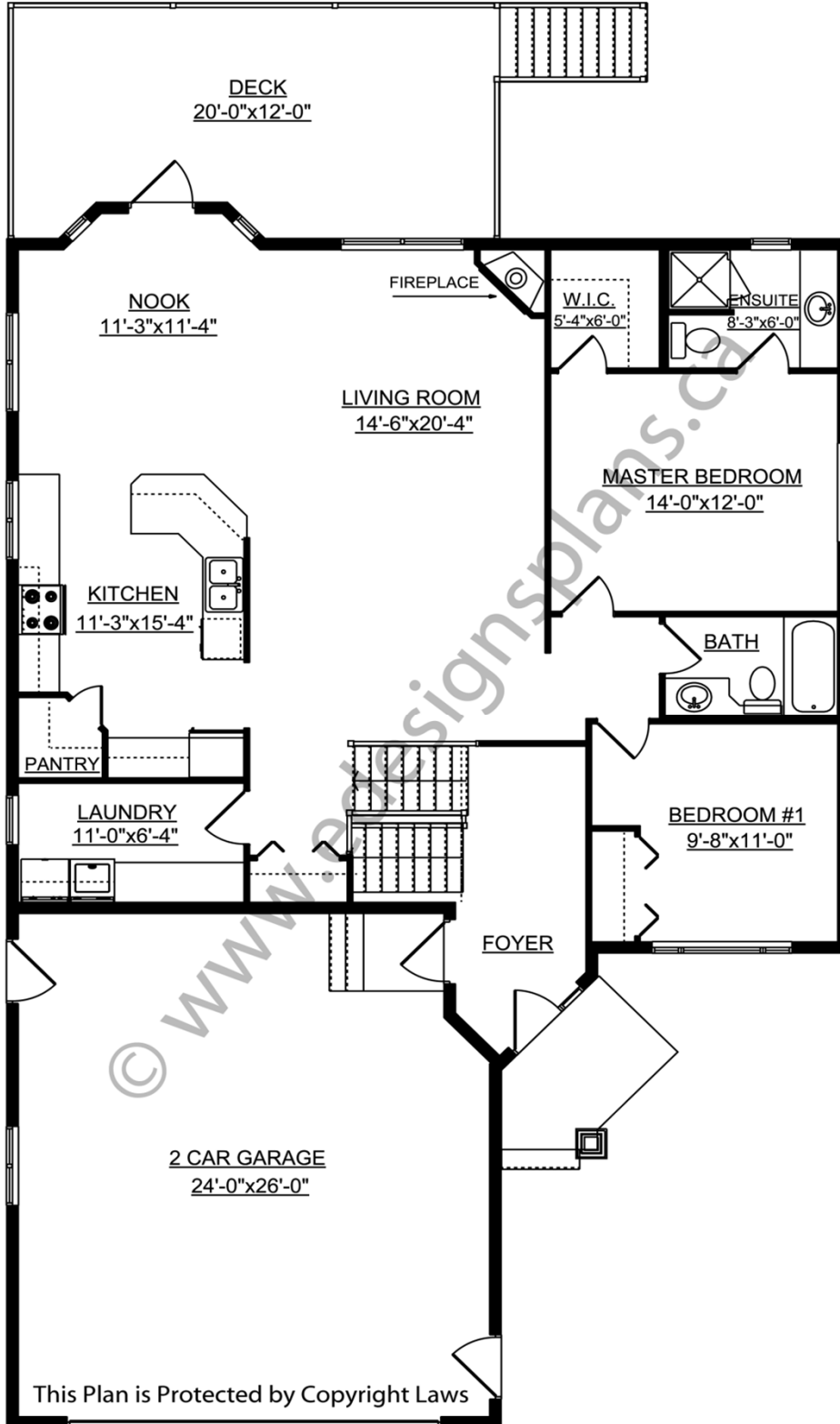
A western Canadian company from Alberta that designs and ships home plans all across Canada, the US, and Overseas.

For more information about this plan contact the designer at: [info@edesignsplans.ca](mailto:info@edesignsplans.ca).

Plan 2010515

[www.edesignsplans.ca](http://www.edesignsplans.ca)

Call Us 1-855-675-1800



Main Floor

This Plan is Protected by Copyright Laws

PROTECTED BY COPYRIGHT LAWS.  
PROPERTY OF **E-DESIGNS PLANS INC.**