

E-Designs *Plans Inc.*

A western Canadian company from Alberta that designs and ships home plans all across Canada, the US, and Overseas.

For more information about this plan contact the designer at: info@edesignsplans.ca.

Plan #: 2010518 Front Elevation

www.edesignsplans.ca

Call Us 1-855-675-1800



Rear Elevation

Bi-Level with Bonus Room & 3-Car Garage

1894 Sq. Ft. Main & Second Floor
plus Walkout Basement

Width: 49'-0"
Depth: 56'-0" (plus deck)
Bedrooms: 3
Bathrooms: 2
Main Floor Laundry: Yes
Walk-in Pantry: Yes
Flex Room/Office: Yes

Plan #: 2010518

Exterior Walls: 2x6 x 8 Ft. (Main Floor)
2x6 x 8 Ft. (Second Floor)
Foundation: 4' 2x6 Pony Wall on 4' Concrete
Special Ceilings: Vaulted-Main Floor/Master Bedroom
Fireplace: Yes
Deck(s): Rear (over Walkout)
Veranda: No
Attached Garage: Yes (3-Car - 16'x8' & 9'x8' Doors)
Finished Basement Plan: No

Bi-Level with Bonus Room, Walkout & 3-Car Garage: This home shown with clean roof lines, contrasting trim, and window treatments, gives this Bi-Level a very stylish appeal. Welcome your guests through the bright front foyer featuring a large window above the front door, which also has 2 sidelights. From the large foyer, you can go down to the lower level into the garage, or enter into the main living area. This open plan has a vaulted ceiling over the great room, nook and kitchen. The layout allows for many options in furniture arrangement centered around the gas fireplace. The double garden doors in the nook extend the entertaining area outdoors via a deck, which also leads to the rear yard. The kitchen features a layout to provide maximum counterspace, lunch bar, and a working island. Note the walk-in pantry. There are two nice-sized bedrooms located on the main floor accompanied by a large main bath. The flex room has a vaulted ceiling with a large window. Up the main staircase, a landing leads to an attractive front master suite with its large picture window, convenient large walk-in closet, and a 5-piece ensuite that boasts a soaker tub and a larger than usual shower. A 2-sided fireplace nestled between the bedroom and ensuite not only adds to the decor, but will provide some extra heat. The large 3-car garage will be Dad's pride and joy. The single car section has a rear overhead 8'x6'-9" door handy for a lawnmower, ATV, etc. With its fresh, contemporary appearance, this 1894 square foot home will fit well into any development.

E-Designs Plans Inc.

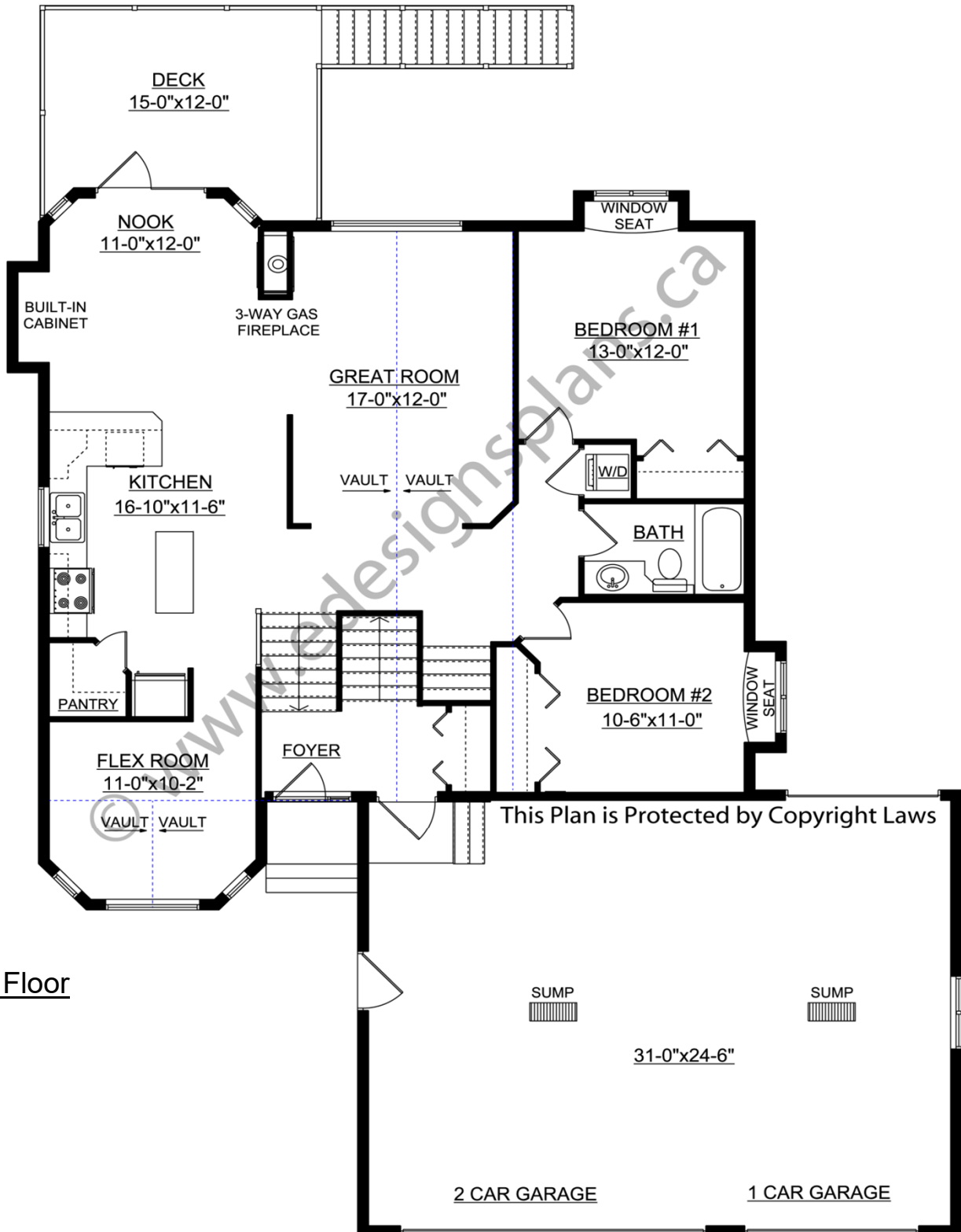
A western Canadian company from Alberta that designs and ships home plans all across Canada, the US, and Overseas.

For more information about this plan contact the designer at: info@edesignsplans.ca.

Plan 2010518

www.edesignsplans.ca

Call Us 1-855-675-1800



Main Floor

PROTECTED BY COPYRIGHT LAWS.
PROPERTY OF **E-DESIGNS PLANS INC.**

E-Designs Plans Inc.

A western Canadian company from Alberta that designs and ships home plans all across Canada, the US, and Overseas.

For more information about this plan contact the designer at: info@edesignsplans.ca.

Plan 2010518

www.edesignsplans.ca

[Call Us 1-855-675-1800](tel:1-855-675-1800)

Second Floor

