

E-Designs *Plans Inc.*

A western Canadian company from Alberta that designs and ships home plans all across Canada, the US, and Overseas.

For more information about this plan contact the designer at: info@edesignsplans.ca.

Plan #: 2010520 Front Elevation

www.edesignsplans.ca

[Call Us 1-855-675-1800](tel:1-855-675-1800)



Rear Elevation

Bi-Level with Bonus Room & 3-Car Garage

1502 Sq. Ft. Main Floor

485 Sq. Ft. Second Floor

1987 Sq. Ft. Total Living Area

Width: 60'-0"

Depth: 58'-6" (plus deck)

Bedrooms: 3

Bathrooms: 2

Main Floor Laundry: Yes

Walk-in Pantry: Yes

Office/Den: No

Plan #: 2010520

Exterior Walls:

2x6 x 8Ft. (Main Floor)

2x6 x 8 Ft. (Second Floor)

Foundation:

4' 2x6 Pony Wall on 4' Concrete
(Other Foundations Available)

Special Ceilings:

Vaulted Main Floor/Master Bedroom

Fireplace:

Yes

Deck(s):

Rear

Veranda:

No

Attached Garage:

Yes (3-Car - 16'x8' & 9'x8' Doors)

Finished Basement Plan:

No

Executive Bi-Level: Be the envy of the block with this Executive style home. Not only does it have great curb appeal, but also attention to detail on the inside. From the large dropped entry you access the main floor, garage or lower level. Upon entering, the vaulted open floor plan will certainly catch your eye. The L-shaped kitchen has a built-in pantry and large island with lunch bar. Double garden doors take you to the rear deck. Decorative columns on each side of an archway leads into the dining room, which has a vaulted ceiling. The laundry is conveniently located on the main floor between the two spare bedrooms. The master bedroom has an inverted vault which even makes this room look bigger. Step into the very unique ensuite with the jetted tub sitting in the angled walls. A 2-sided fireplace provides some extra warmth to both rooms. No shortage of closet space here with the walk-in closet. Dad will have lots of room in the 3-car garage. Note the large windows in the basement for a nice bright area.

PROTECTED BY COPYRIGHT LAWS.
PROPERTY OF ***E-DESIGNS PLANS INC.***

E-Designs Plans Inc.

A western Canadian company from Alberta that designs and ships home plans all across Canada, the US, and Overseas.

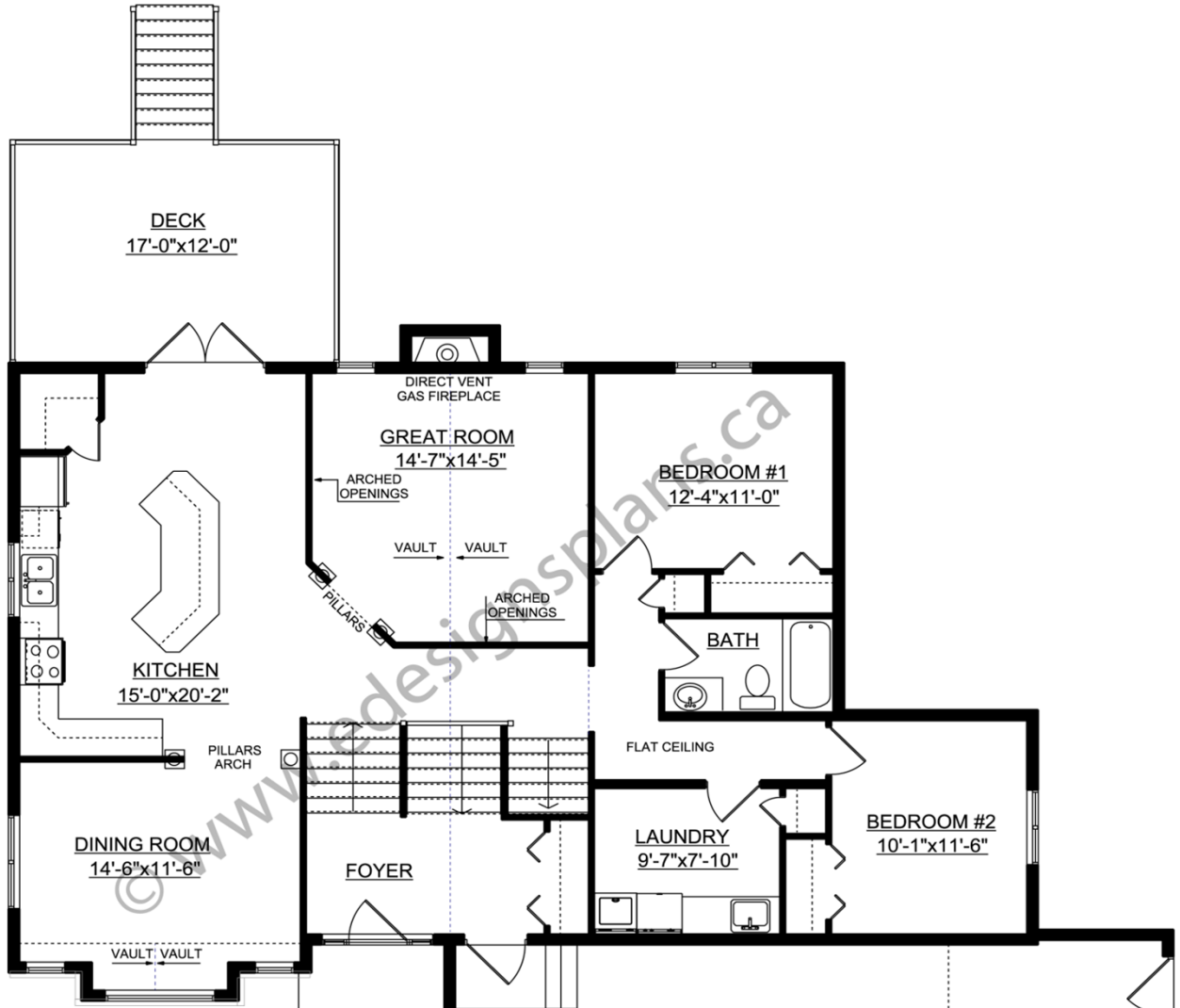
For more information about this plan contact the designer at: info@edesignsplans.ca.

Plan 2010520

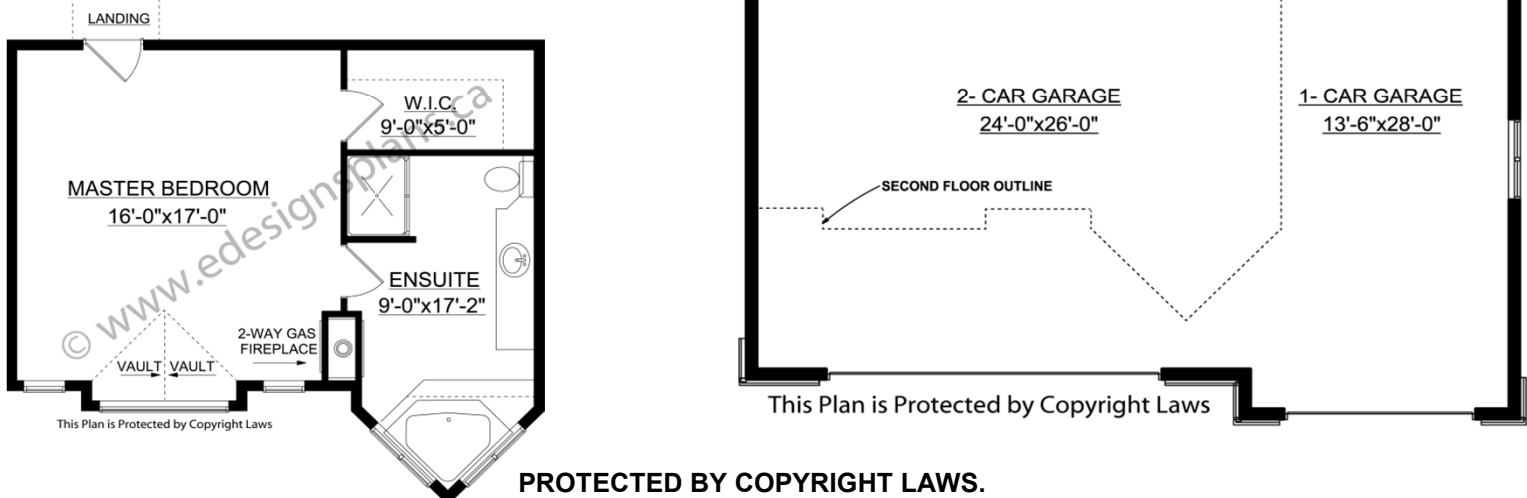
www.edesignsplans.ca

Call Us 1-855-675-1800

Main Floor



Second Floor



This Plan is Protected by Copyright Laws

This Plan is Protected by Copyright Laws

PROTECTED BY COPYRIGHT LAWS.
PROPERTY OF **E-DESIGNS PLANS INC.**