

E-Designs Plans Inc.

A western Canadian company from Alberta that designs and ships home plans all across Canada, the US, and Overseas.

For more information about this plan contact the designer at: info@edesignsplans.ca.

Plan #: 2010542 Front Elevation

www.edesignsplans.ca

Call Us 1-855-675-1800



Rear Elevation

Modified Bi-Level with 3-Car Garage

1790 Sq. Ft. Total Living Area

Width: 58'-8"
 Depth: 56'-0" (plus deck)
 Bedrooms: 3
 Bathrooms: 2
 Main Floor Laundry: No
 Walk-in Pantry: Yes
 Office/Den: No

Plan #: 2010542

Exterior Walls: 2x6 x 9 Ft. (Main Floor)
 Foundation: 5' 2x6 Pony Wall on 4' Concrete (Other Foundations Available)
 Special Ceilings: Vaulted
 Fireplace: No
 Deck(s): Rear
 Veranda: No
 Attached Garage: Yes (3-Car - 16'x8' & 9'x8' Doors)
 Finished Basement Plan: No

Modified Bi-Level with 3-Car Garage: This home is shown with clean roof lines, contrasting trim, and window treatments which give this Bi-Level a very stylish appeal. Welcome your guests through the bright front foyer with large window above the door, which also has 2 sidelites. From the large foyer you can go down to the lower level, into the garage, or enter into the main living area. The 2-piece bath is conveniently located off the garage and front entry which means not having to enter the main part of the house. This open plan has a vaulted ceiling. It allows for many options in furniture arrangement centered around the gas fireplace. The double garden doors in the nook extend the entertaining area outdoors via a deck which also leads to the rear yard. The kitchen features a layout to provide maximum counter space, lunch bar, and a functional work triangle. Note the oversized walk-in pantry. There are 2 nice-sized bedrooms located on the main floor, accompanied with a large main bath. Up the main staircase, a landing leads to an attractive front master suite with its large picture window, convenient walk-in closet, and 5-piece ensuite. The large 3-car garage will be Dad's pride and joy being 25 feet deep. With its fresh, contemporary appearance, this 1790 sq. ft. home will fit well into any development.

E-Designs Plans Inc.

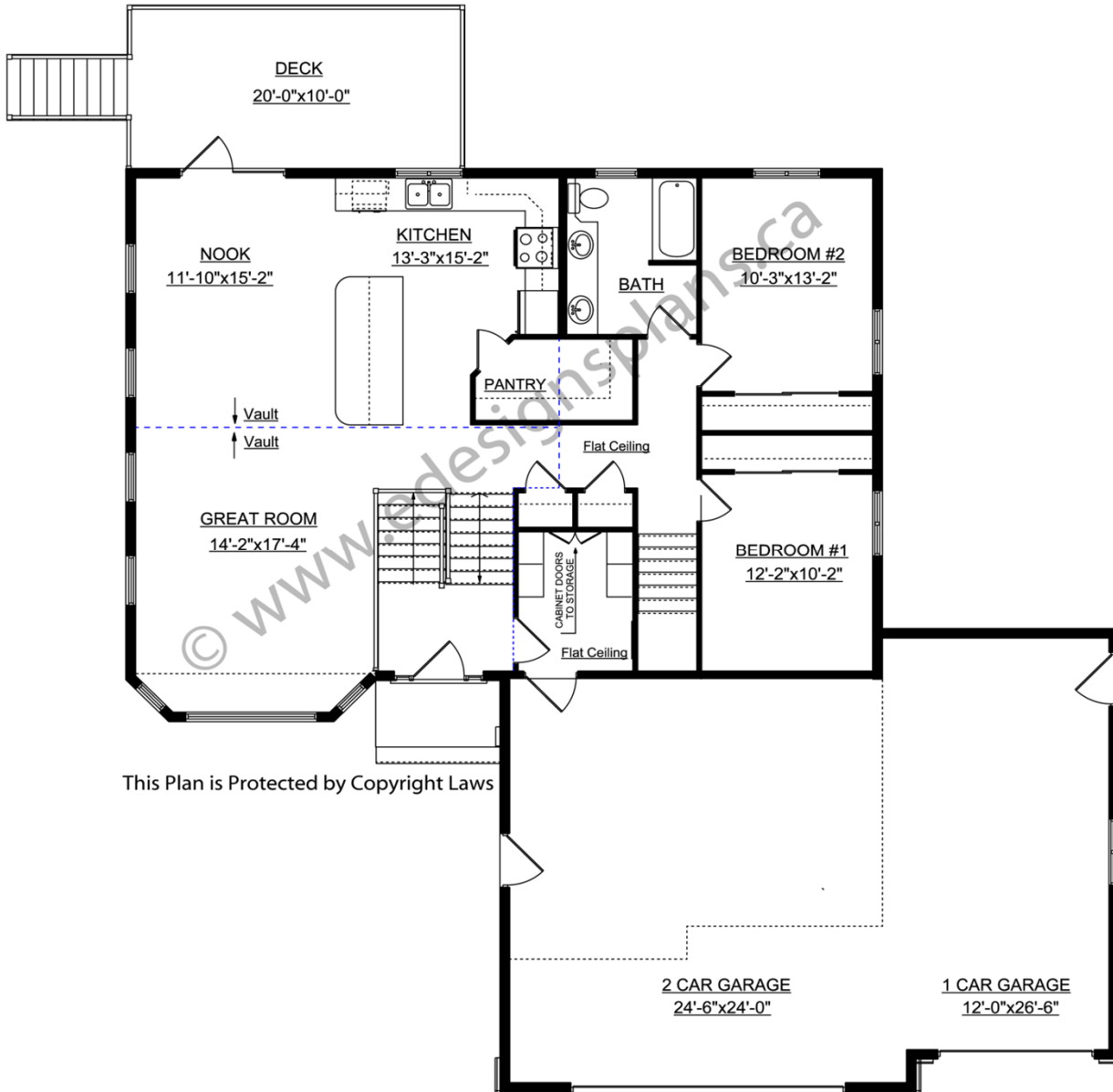
A western Canadian company from Alberta that designs and ships home plans all across Canada, the US, and Overseas.

For more information about this plan contact the designer at: info@edesignsplans.ca.

Plan 2010542

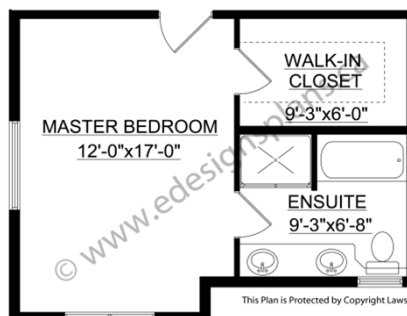
www.edesignsplans.ca

Call Us 1-855-675-1800



Main Floor

This Plan is Protected by Copyright Laws



Second Floor

This Plan is Protected by Copyright Laws

PROTECTED BY COPYRIGHT LAWS.
PROPERTY OF **E-DESIGNS PLANS INC.**